



Bexley Lane

Sidcup
DA14 4JG

Freehold

Three bedroom detached house
Chain Free
Potential to extend (STPP)
Requires modernisation
Off street parking
Easy access to Albany Park station
Short drive to Sidcup High Street





FULL DESCRIPTION

This generously proportioned three-bedroom detached house presents an exciting opportunity to create a stunning family home. Offering significant scope to extend (subject to the necessary planning consents), the property also benefits from ample off-street parking and is available with no onward chain. Although in need of modernisation, it provides the perfect canvas for buyers looking to undertake a renovation project and add their own personal touch.

Easy access to Albany Park station and a short drive from Sidcup High Street or Station Road.



Directions

From our Sidcup office turn left and proceed along station road, take the first turning on the left in to Faraday Avenue and continue all the way to the end. At the end of the road turn right into Bexley Lane. Closest Stations: Albany Park (0.22 mi) Sidcup (0.78 mi) Bexley (1.20 mi) Closest Schools: Royal Park Primary School (0.38 mi) Hurst Primary School (0.55 mi) Chislehurst and Sidcup Grammar School (0.61 mi)



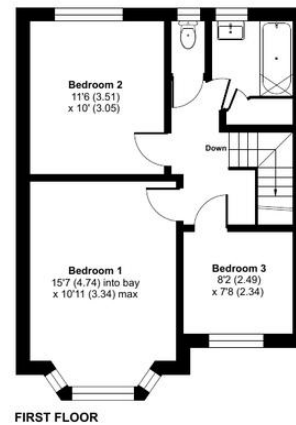
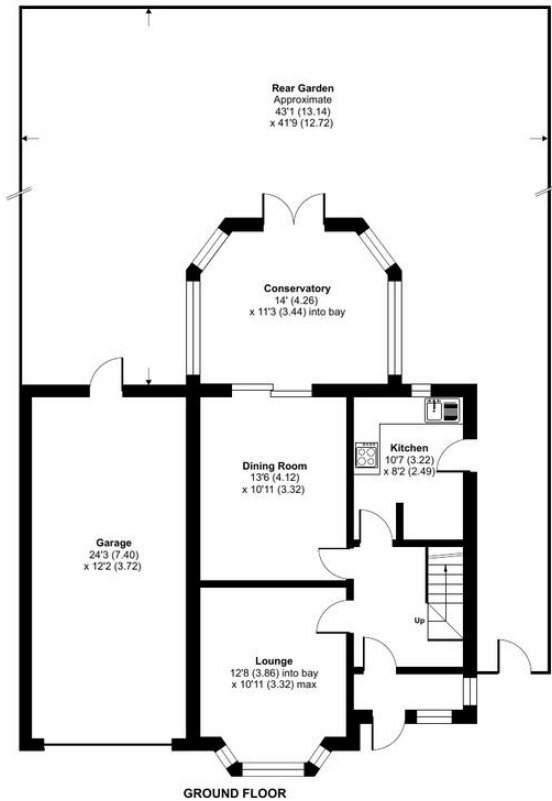
Local Authority
Council Tax Band
EPC Rating

Bexley London Borough Council
E
D

Bexley Lane, Sidcup, DA14

Approximate Area = 1139 sq ft / 105.8 sq m
Garage = 296 sq ft / 27.5 sq m
Total = 1435 sq ft / 133.3 sq m

For identification only - Not to scale



Floor plan produced in accordance with RICS Property Measurement Standards incorporating International Property Measurement Standards (IPMS2 Residential). © rnhcom 2026. Produced for Drewery. REF: 1477555

Drewery Property Consultants
128 Station Road
Sidcup
Kent
DA15 7AF

Contact
020 8269 6605
info@drewery.co.uk
www.drewery.co.uk

Agents Note: Whilst every care has been taken to prepare these particulars, they are for guidance purposes only. All measurements are approximate and are for general guidance purposes only and whilst every care has been taken to ensure their accuracy, they should not be relied upon and potential buyers/tenants are advised to recheck the measurements.