



Connells

Batchelor Way
Downton Salisbury



Property Description

Offering to the market this well-presented, detached house in Batchelor Way, Downton. The ground floor has a lounge, kitchen diner, and cloakroom. The first floor has a principal bedroom with en-suite shower room, two further bedrooms and a family bathroom. To the rear of the property is a mature, enclosed garden with patio for entertaining & al-fresco dining. Driveway parking for two vehicles. Located in this sought after village of Downton with its high street, post office and garage, and commuting links to the medieval city of Salisbury.

Salisbury offers a range of amenities, these include, supermarkets, high-street shops, twice weekly markets, copious restaurants, pubs and bars, a theatre, the arts centre, 2 cinemas, leisure centres and gyms and renowned state and private schools. These include Bishop's Wordsworth School & South Wilts Grammar School. There are direct rail links to London Waterloo, Bristol & Southampton.



Entrance Hall

Doors to lounge, kitchen diner, cloakroom & storage cupboard. Stairs to first floor

Lounge

14' 2" x 11' 8" (4.32m x 3.56m)

Dual aspect with windows to front and side

Kitchen Diner

23' 3" x 9' 1" (7.09m x 2.77m)

Comprising wall and base units with work surfaces over, stainless steel sink drainer, oven, hob and extractor unit, spaces for dishwasher, washing machine and fridge freezer, Window and double doors to rear aspect.

Cloakroom

Comprising wash hand basin & WC

Landing

Doors to bedrooms and bathroom. Window side aspect

Bedroom One

12' 2" x 9' 5" (3.71m x 2.87m)

Window front aspect, fitted wardrobes door to en-suite

En-Suite

Comprising double shower, pedestal wash hand basin & WC

Bedroom Two

11' 5" x 8' 1" (3.48m x 2.46m)

Window rear aspect, fitted wardrobes

Bedroom Three

9' 2" x 8' 1" (2.79m x 2.46m)

Window rear aspect

Bathroom

Comprising panel enclosed bath with shower over, pedestal wash hand basin, WC

Outside

Rear Garden

Enclosed by dwarf wall & fencing with patio providing space for garden furniture and al-fresco dining, lawn, path to rear of the garden, raised beds & garden shed

Front Garden

Mature shrubs and climbers.

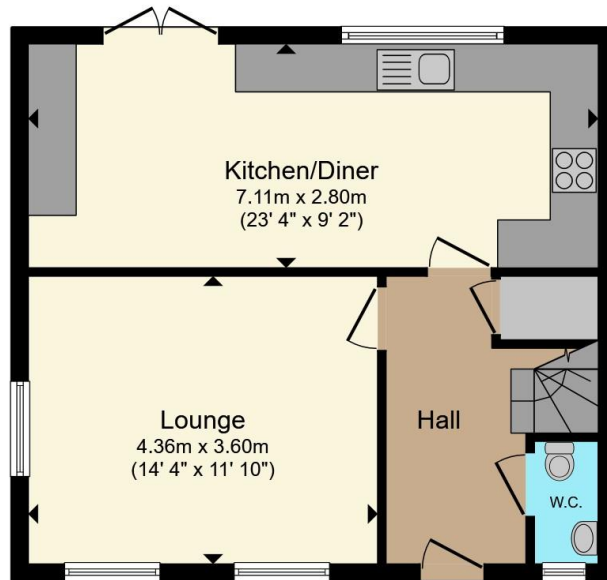
Parking

Driveway to the left of the property with parking for two cars.

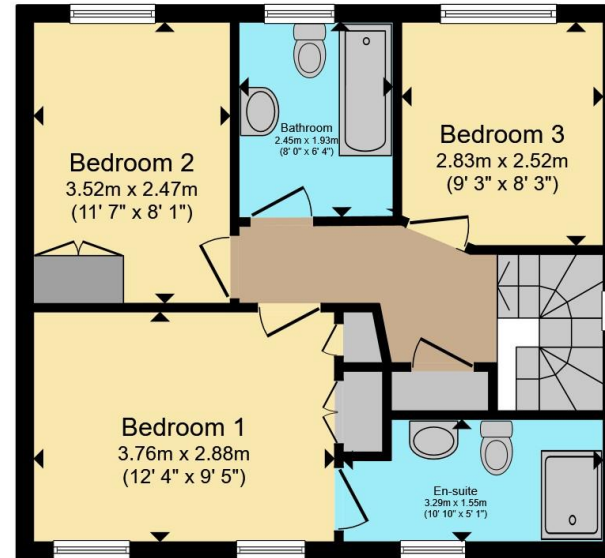








Ground Floor



First Floor

Total floor area 92.4 m² (995 sq.ft.) approx

This floor plan is for illustrative purposes only. It is not drawn to scale. Any measurements, floor areas (including any total floor area), openings and orientation are approximate. No details are guaranteed, they cannot be relied upon for any purpose and they do not form part of any agreement. No liability is taken for any error, omission or misstatement. A party must rely upon its own inspection(s). Powered by www.propertybox.io



To view this property please contact Connells on

T 01722 328 562

E salisbury@connells.co.uk

46-50 Castle Street
Salisbury SP1 3TS

EPC Rating: B Council Tax
Band: E

Tenure: Freehold

view this property online connells.co.uk/Property/SAL308380



1. MONEY LAUNDERING REGULATIONS Intending purchasers will be asked to produce identification documentation at a later stage and we would ask for your co-operation in order that there will be no delay in agreeing the sale. 2. These particulars do not constitute part or all of an offer or contract. 3. The measurements indicated are supplied for guidance only and as such must be considered incorrect. Potential buyers are advised to recheck measurements before committing to any expense. 4. We have not tested any apparatus, equipment, fixtures, fittings or services and it is in the buyers interest to check the working condition of any appliances.

Connells Residential is registered in England and Wales under company number 1489613, Registered Office is Cumbria House, 16-20 Hockliffe Street, Leighton Buzzard, Bedfordshire, LU7 1GN. VAT Registration Number is 500 2481 05.

See all our properties at www.connells.co.uk | www.rightmove.co.uk | www.zoopla.co.uk

Property Ref: SAL308380 - 0009