

PROPERTY TYPE House - Detached

BEDROOMS 4

RECEPTION ROOMS 2

BATHROOMS 2

EPC RATING C

COUNCIL TAX BAND F



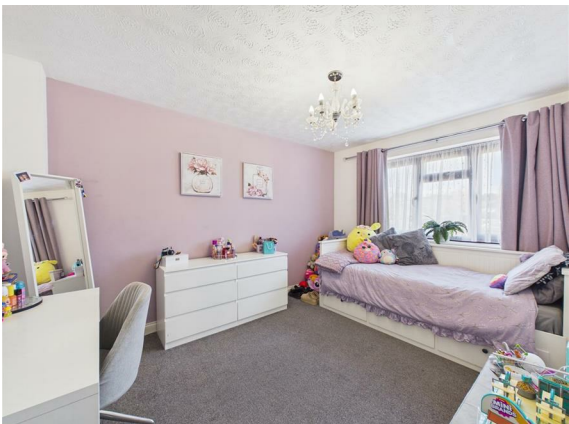
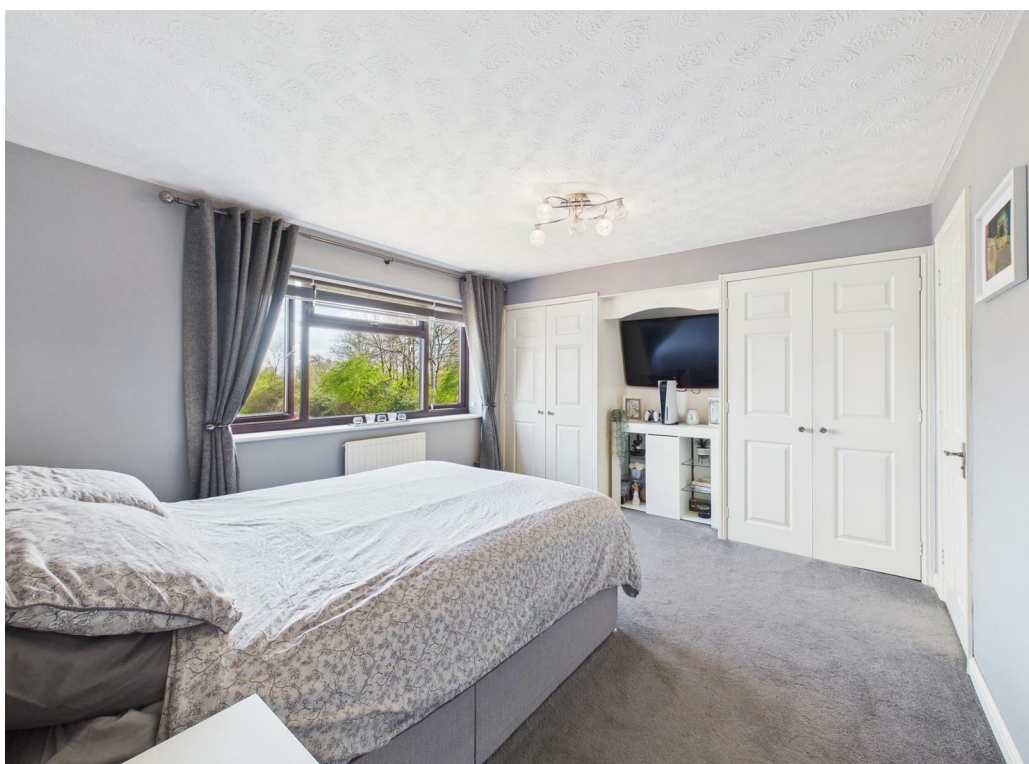
Stylish detached family home in sought after locality.

Entrance hallway, living room, separate dining room, conservatory, modern style kitchen, plus utility and downstairs WC.

At the first floor are four bedrooms (master en suite), and a family bathroom.

There is also a side return extension at the ground floor, with an additional bathroom (unfinished), and access to further storage. With an up and over garage door to the front of the property providing still further storage for bikes etc.

Set in a decent size plot, the rear garden is part laid to patio and lawn, and is enclosed by a brick built wall, providing a child friendly space.



the location

Set on this ever popular modern development, there are a whole host of local facilities within easy walking distance, including nursery, local schools, Asda superstore, and the retail park at Longwell Green, with its range of national retailers, including Marks and Spencer, Costa, a gym, swimming pool and cinema complex. Bristol 4.8 miles Bath 8.3 miles

*Stylish detached home
in sought after
locality!*



just a thought...

If you hadn't considered this area before, this home is definitely worth viewing! Great accommodation, surprisingly well located with loads of local amenities. Homes of this type are always extremely popular!