



Bryan Bishop
and partners

The Avenue
Welwyn, AL6 0PN

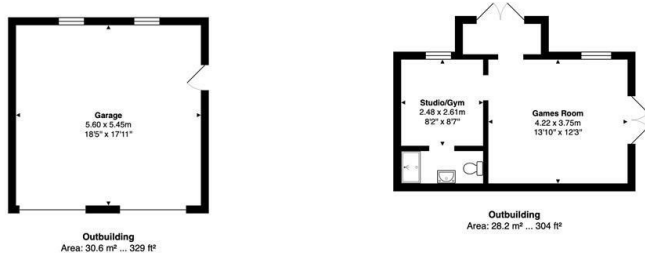
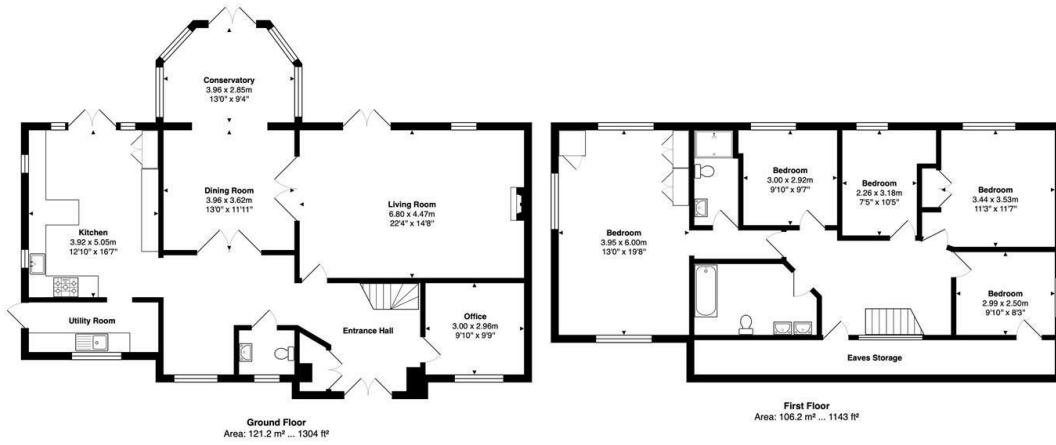
The Avenue

Welwyn, AL6 0PN

Summary

Summary: Bryan Bishop & Partners are delighted to bring to the market this substantial five-bedroom detached family residence, enviably positioned within the prestigious and highly sought-after Oaklands area of Welwyn. Occupying a generous plot and offering beautifully presented accommodation throughout, this exceptional home combines elegant family living with contemporary style and versatility.





Total Area: 286.1 m² ... 3080 ft²
FOR ILLUSTRATIVE PURPOSES ONLY. NOT TO SCALE
Whilst every attempt has been made to ensure the accuracy of the floor plan shown, all measurements, positioning, fixtures, features, fittings and any other data shown are approximate interpretations for illustrative purposes only and are not to scale. No responsibility is taken for any error, omission, mis-statement or use of data shown.
Property marketing provided by www.matthewkyle.co.uk



Energy Efficiency Rating		Current	Potential
Very energy efficient - lower running costs			
92 plus	A		
81-91	B		
69-80	C		
55-60	D		
39-54	E		
21-38	F		
1-20	G		
Not energy efficient - higher running costs			
England & Wales		74	78
EU Directive 2002/91/EC			



Bryan Bishop
and partners

6a High Street | Welwyn | AL6 9EG | 01438 718877 | info@bryanbishop.co.uk | www.bryanbishop.co.uk Find us on

