



**Price**

**£1,250 PCM**

Fees Apply



Available 31/01/26

**Bower Place Maidstone  
ME16**

*Wards*  
Helping you move forwards





## Main Features

Split Level Two Bedroom Apartment

Alternative Deposit Option Available

Video Walk About Available

En Suite & Family Bathroom

Part Furnished/Unfurnished

Gas Central Heating



**Deposit required is £1,442.31**  
Maidstone District - Council Tax Band B

Renting a property is a big commitment and we recommend that you visit the local authority website and these websites which offer helpful information and advice about letting

[www.gov.uk/government/publications/how-to-rent](http://www.gov.uk/government/publications/how-to-rent)

[www.gov.uk/private-renting](http://www.gov.uk/private-renting)

[www.wardsofkent.co.uk/renting/tenancy-fees-individuals/](http://www.wardsofkent.co.uk/renting/tenancy-fees-individuals/)

[www.gov.uk/green-deal-energy-saving-measures](http://www.gov.uk/green-deal-energy-saving-measures)

**Call Maidstone 01622 675064 ■ [wardsofkent.co.uk](http://wardsofkent.co.uk)**

IMPORTANT INFORMATION: Please contact our Lettings Team who will confirm the total costs involved in renting this property. For clarification, we wish to inform the prospective tenant that we have prepared these details as a general guide. The agent has not carried out a detailed survey nor tested the services, appliances, or specific fittings (unless otherwise stated), and no warranty can be given as to their condition. All room measurements are taken at floor level. We strongly recommend that all the information which we provide about the property is verified by yourself and your advisers. The contents of this publication are © Wards, 2015. Wards is a trading name of Arun Estates Limited Registered in England No. 2597969

## Accommodation

Communal Entrance Hallway

Stairs To 1st Floor & Landing

Lounge 4.45x3.46

Kitchen 3.89x2.75

Bedroom 2 2.95x2.77

Bathroom

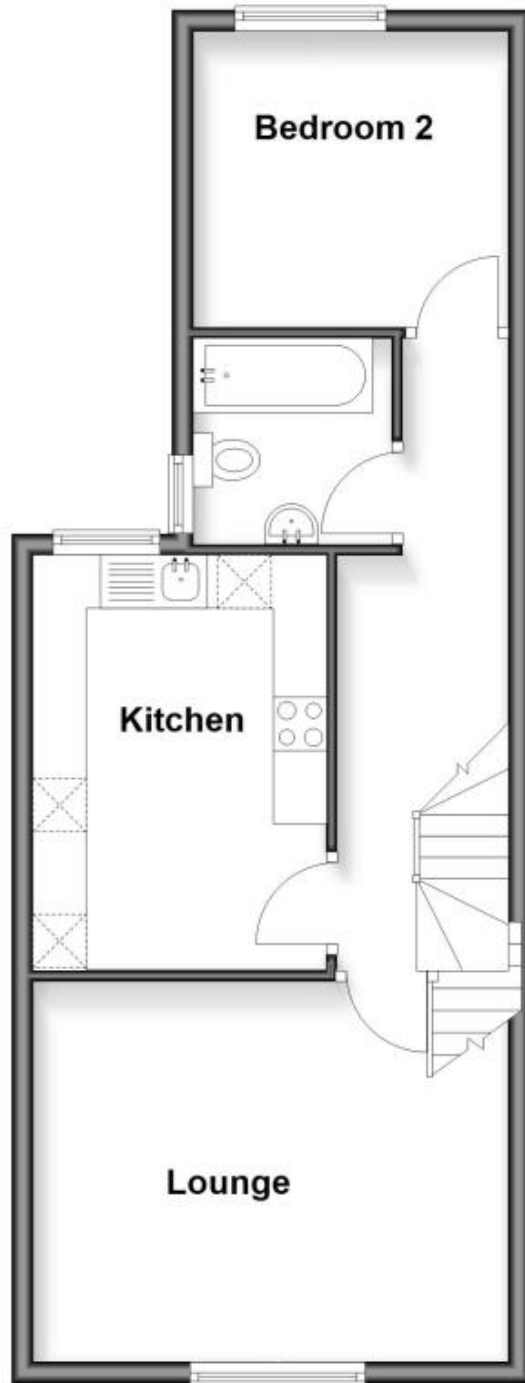
Stairs To 2nd Floor

Bedroom 1 4.50x3.71

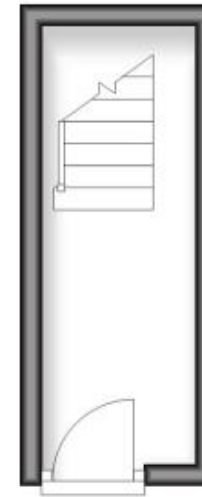
En Suite



**First Floor**



**Ground Floor**



**Second Floor**

