



## **2 Bedroom Riverside Apartment Charter Quay, Kingston upon Thames £500,000 Share of Freehold**

2 Bedroom executive apartment, located within the highly regarded Charter Quay Riverside Development.

Situated within Garricks House, this exceptional apartment offers far reaching views of the River Thames and beyond from its 6th floor private balcony.

Immaculately presented with a spacious living room, with doors opening to the high specification kitchen with granite worktops and fully fitted appliances.

The principal bedroom boasts fitted wardrobes and an en suite shower room.

Second Bedroom designed with fitted wardrobes. Further luxury bathroom and storage cupboard.

Charter Quay Residents benefit from 24 hour concierge, secure underground parking, Residents landscaped roof garden and Health Suite. Share of Freehold. Offered to the market with no onward chain. Charter Quay is located on the banks of the Thames, adjacent to the Rose Theatre, Kingston's historic town centre with high street and independent stores, coffee shops and restaurants.

Just a short walk to Kingston's mainline train station with frequent trains to London Waterloo.

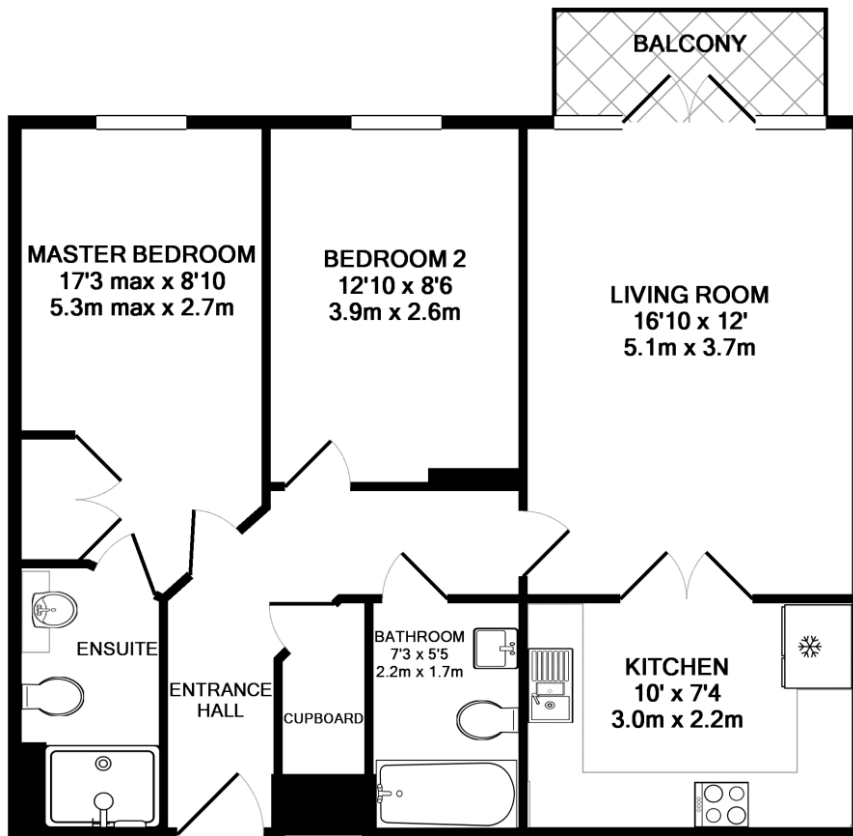
Contact us today to arrange your appointment to view.

[WWW.STACKANDBONNER.COM](http://WWW.STACKANDBONNER.COM)

020 8547 1234

[sales@stackandbonner.com](mailto:sales@stackandbonner.com)





**GARRICKS HOUSE, CHARTER QUAY, KINGSTON UPON THAMES, SURREY**  
**TOTAL APPROX. FLOOR AREA 755 SQ.FT. (70.1 SQ.M.)**

Whilst every attempt has been made to ensure the accuracy of the floor plan contained here, measurements of doors, windows, rooms and any other items are approximate and no responsibility is taken for any error, omission, or mis-statement. This plan is for illustrative purposes only and should be used as such by any prospective purchaser. The services, systems and appliances shown have not been tested and no guarantee as to their operability or efficiency can be given  
 Made with Metropix ©2012

- 2 Bedroom Riverside Apartment with far reaching views
- Popular Charter Quay Riverside Development
- 6th Floor – 755 sq ft of internal living space
- Spacious Living Room
- Modern Fitted Kitchen with built in Appliances
- 2 Luxury Bathrooms
- River Views
- Secure Underground Allocated Parking Space
- No onward chain
- 24hr Concierge Service
- Residents Health Suite
- Residents Roof Garden
- Lift Service
- Service Charge: £4,119.73 plus a reserve fund contribution of £1,227.17 = £5,346.88 per annum
- Share of Freehold – 973 year underlying lease
- Council Tax: Band F - £3,767.28 per annum