



64 Ravenscroft, Holmes Chapel, CW4 7HJ

£395,000

**GASCOIGNE
HALMAN**

THE AREA'S LEADING ESTATE AGENCY

64 Ravenscroft

Holmes Chapel

Positioned on a generous corner plot in a popular location a two double bedroom bungalow with L-shaped living dining room, kitchen, large bathroom and gardens to three sides with off road parking and a garage.

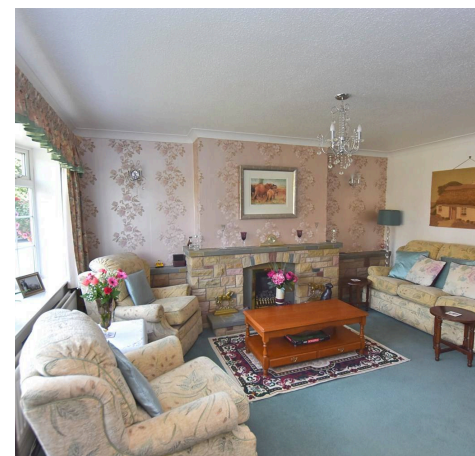
Council Tax band: E

Tenure: Freehold

EPC Energy Efficiency Rating: D

EPC Environmental Impact Rating: D

- White four piece bathroom suite
- Detached Freehold bungalow with gardens spanning three sides
- Two double bedrooms, both with fitted furniture
- Off road parking and single garage
- Beautifully maintained south facing rear garden
- Living room with large bay window



64 Ravenscroft

Holmes Chapel

Off the large welcoming hallway this detached bungalow has a handy storage cupboard and internal access to the garage.

The kitchen is fitted with a range of units and space for appliances.

The living room with its fireplace place and large bay window, overlooking the front garden, in turn opens to the dining area, providing an 'L' shape room.

Two spacious double bedrooms, each having built in furniture helping to maximise space whilst providing storage solutions, positioned at the back of the property with views of the garden.

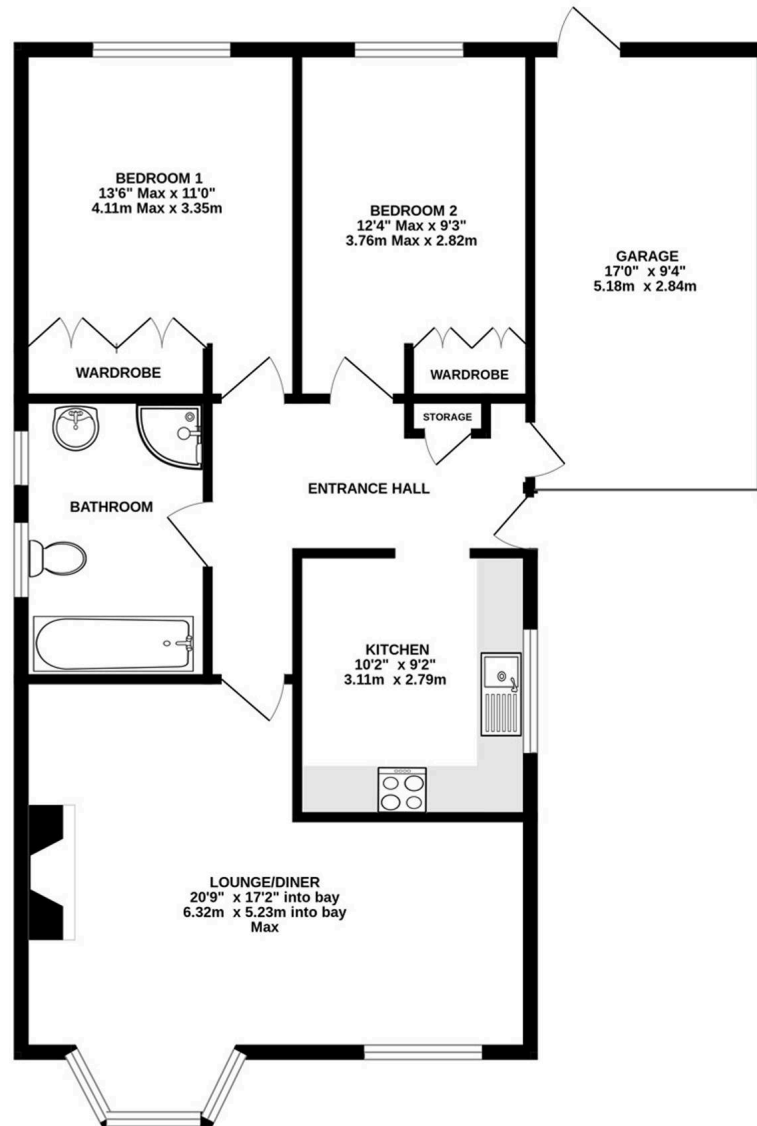
Spacious bathroom has a white four piece suite and benefits from plenty of storage.

As you go outside you are greeted with an immaculate south facing garden, beautifully manicured laid mainly to lawn with mature shrubs and a patio area. The garden continues to the side of the property giving this bungalow huge kerb appeal. For convenience it also benefits from a garage and ample off road parking

A freehold detached bungalow which must be viewed to be appreciated.



GROUND FLOOR
947 sq.ft. (87.9 sq.m.) approx.



TOTAL FLOOR AREA: 947 sq.ft. (87.9 sq.m.) approx.
Measurements are approximate. Not to scale. Illustrative purposes only
Made with Metropix ©2025



THE AREA'S LEADING ESTATE AGENCY