

# Jonathan Hunt

ESTATE AGENCY

20 High Street Ware SG12 9BX

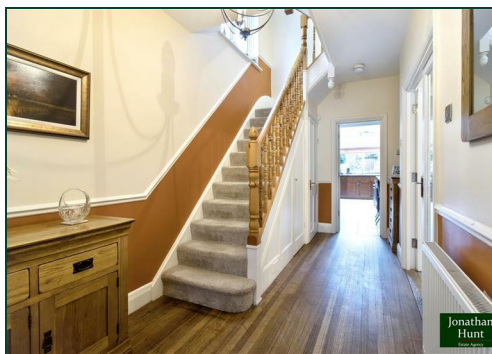
Tel: 01920 411090

8 High Street Buntingford SG9 9AG

Tel: 01763 272727

info@jonathan-hunt.co.uk

www.jonathanhunt.co.uk



**76 Forest Glade, London, E4 9RJ**

**Price Guide £1,200,000**

Rarely available — a substantial five-bedroom Edwardian home arranged over three spacious floors on one of Highams Park's most desirable roads. Overlooking the beautiful Highams Park and Lake, this characterful semi-detached property offers generous living space, period features, and superb family flexibility. The ground floor features two bright interconnecting reception rooms and a large kitchen/breakfast room with glazed doors linking back to the main reception, creating an excellent flow for entertaining and larger gatherings. Across the upper floors are five well-proportioned bedrooms, including two impressive bay-fronted doubles, along with a family bathroom on the first floor and a separate shower room serving the top-floor bedrooms. The sunny rear garden offers a mix of lawn, patio, and mature borders, plus an additional parcel of land planted with fruit trees and a vegetable patch. A single garage, accessed via a private rear passage and secured by electric gates, provides valuable parking and storage. Perfectly positioned for Highams Park's vibrant shops, cafés, and Overground Station (Zone 4) with direct links to Liverpool Street. Surrounded by excellent schools and green open spaces, this is an ideal long-term family home in a prime location.

Buntingford Branch - Company No. 10303541 VAT No. 10303541

Ware Branch - Company No. 4759215 VAT No. 700174975

**76 Forest Glade, London, E4 9RJ**

**ENTRANCE HALL**

**LOUNGE 14'10" x 12'7" (4.54 x 3.86)**

**DINING ROOM 13'5" x 11'8" (4.1 x 3.58)**

**KITCHEN 19'3" x 8'0" (5.89 x 2.44)**

**BREAKFAST ROOM 9'10" x 8'0" (3.02 x 2.45)**

**WC**

**PRINCIPAL BEDROOM 16'10" x 12'4" (5.14 x 3.78)**

**BEDROOM TWO 15'10" x 12'2" (4.83 x 3.72)**

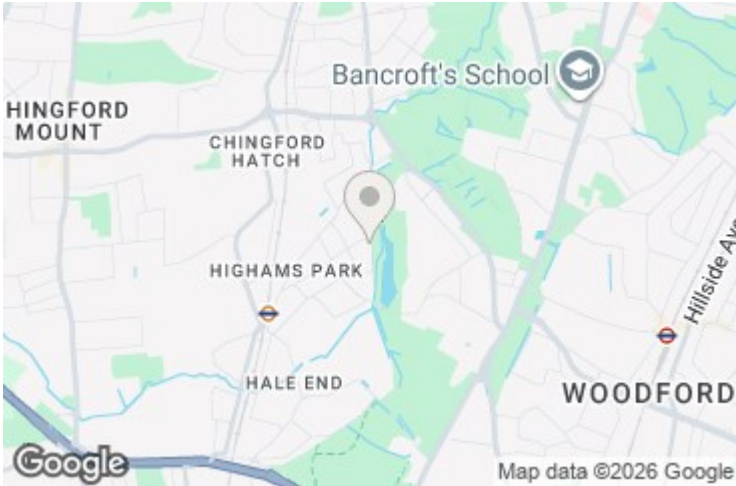
**BEDROOM FIVE 10'0" x 7'5" (3.06 x 2.28)**

**FAMILY BATH AND SHOWER ROOM 8'0" x 7'6" (2.45 x 2.31)**

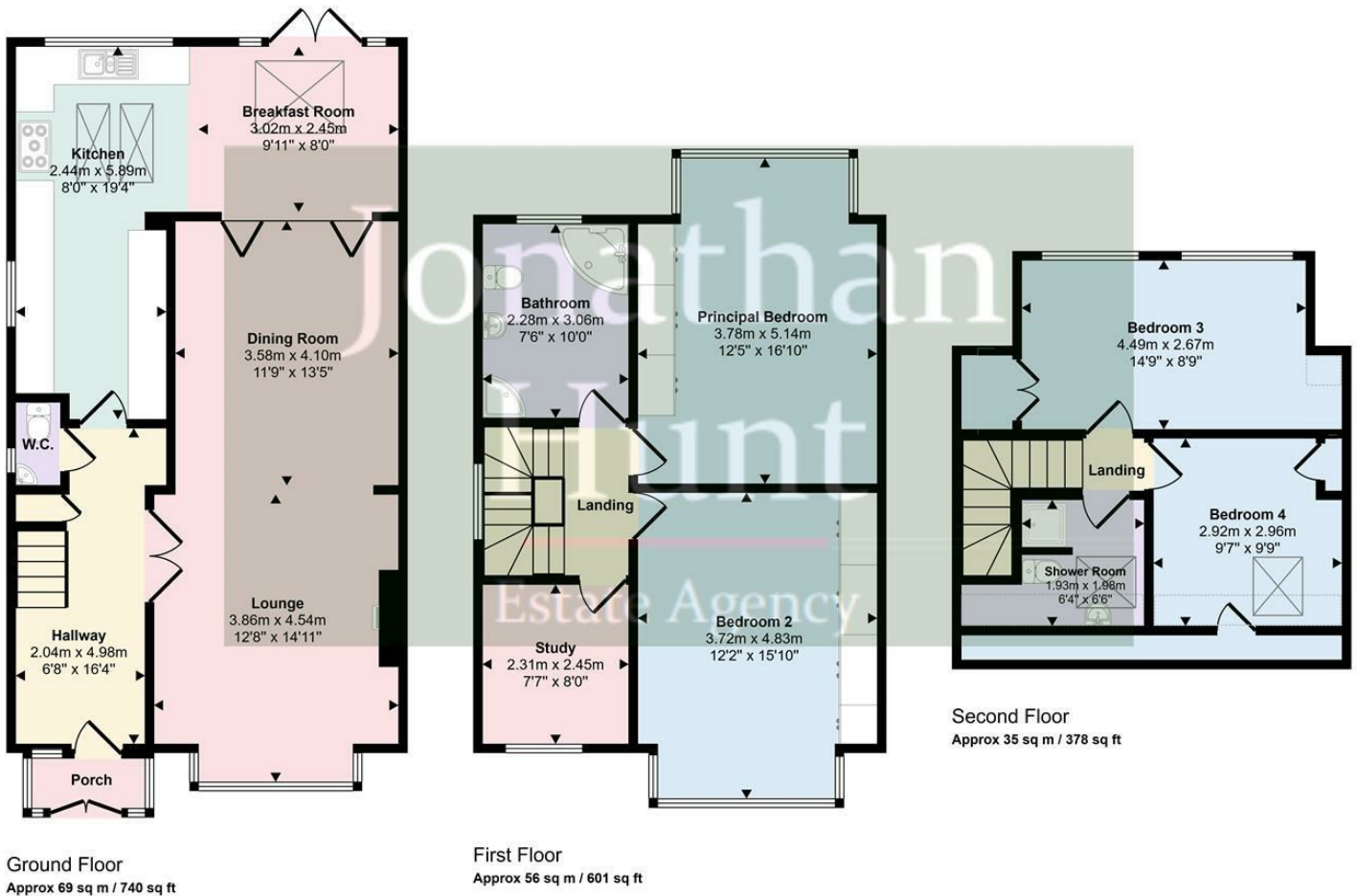
**BEDROOM THREE 14'8" x 8'9" (4.49 x 2.67)**

**BEDROOM FOUR 9'8" x 9'6" (2.96 x 2.92)**

**SHOWER ROOM**



Approx Gross Internal Area  
160 sq m / 1719 sq ft



This floorplan is only for illustrative purposes and is not to scale. Measurements of rooms, doors, windows, and any items are approximate and no responsibility is taken for any error, omission or mis-statement. Icons of items such as bathroom suites are representations only and may not look like the real items. Made with Made Snappy 360.