



Guide Price
£230,000

Freehold

3x  1x  2x 

**St. John's Road, Upper
Gillingham, Kent, ME7**

OVER 60?

Secure this property
for up to **59% less!**

Wards
Helping you move forwards



Main features

- Spacious Victorian terrace house
- Some updating required
- Ideal first home or investment
- Gas central heating and double glazing
- Situated in the popular Poets Corner area of Upper Gillingham

Accommodation

SPLIT LEVEL GROUND FLOOR

- Porch
- Entrance Hall
- Lounge: 13'8 x 10'0 (4.17m x 3.05m)
- Dining Room: 12'0 x 10'5 (3.66m x 3.18m)
- Kitchen: 11'4 x 7'4 (3.46m x 2.24m)
- Bathroom

FIRST FLOOR

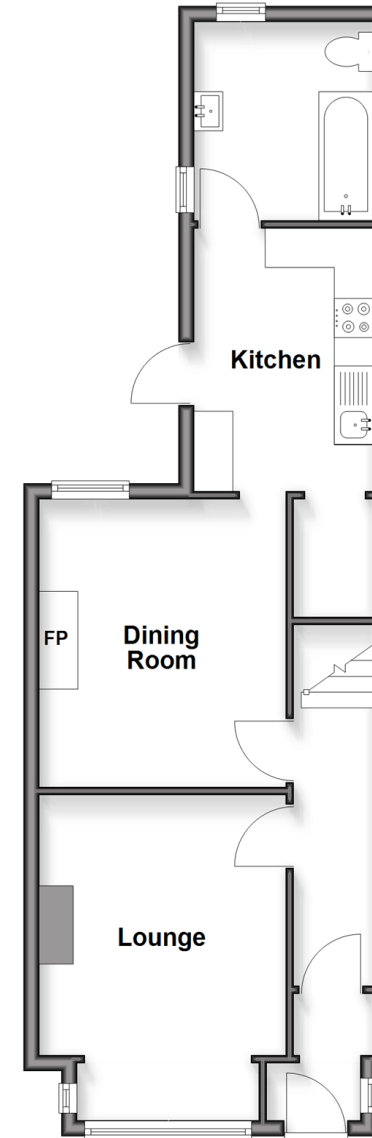
- Landing
- Bedroom 1: 13'2 x 10'9 (4.02m x 3.28m)
- Bedroom 2: 11'9 x 8'0 (3.58m x 2.44m)
- Bedroom 3: 11'1 x 7'5 (3.38m x 2.26m)

OUTSIDE

- Front Garden
- Rear Garden

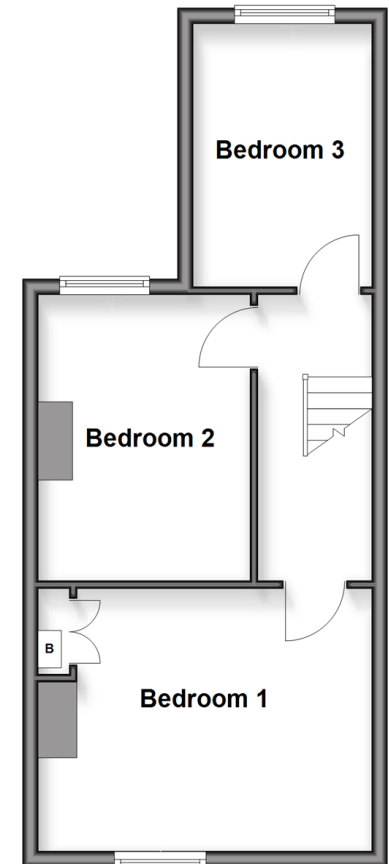
Split Level Ground Floor

Approx. 47.8 sq. metres (514.1 sq. feet)



First Floor

Approx. 38.6 sq. metres (415.6 sq. feet)



Call Gillingham - 01634 851191 ■ wardsofkent.co.uk

■ Through a Homewise Home For Life Plan people aged 60+ can secure this property for up to 59% less, by purchasing a Lifetime Lease



10927667/20260203/ML/GS