



## Bedford Road, SW4

£2,700 Per calendar month

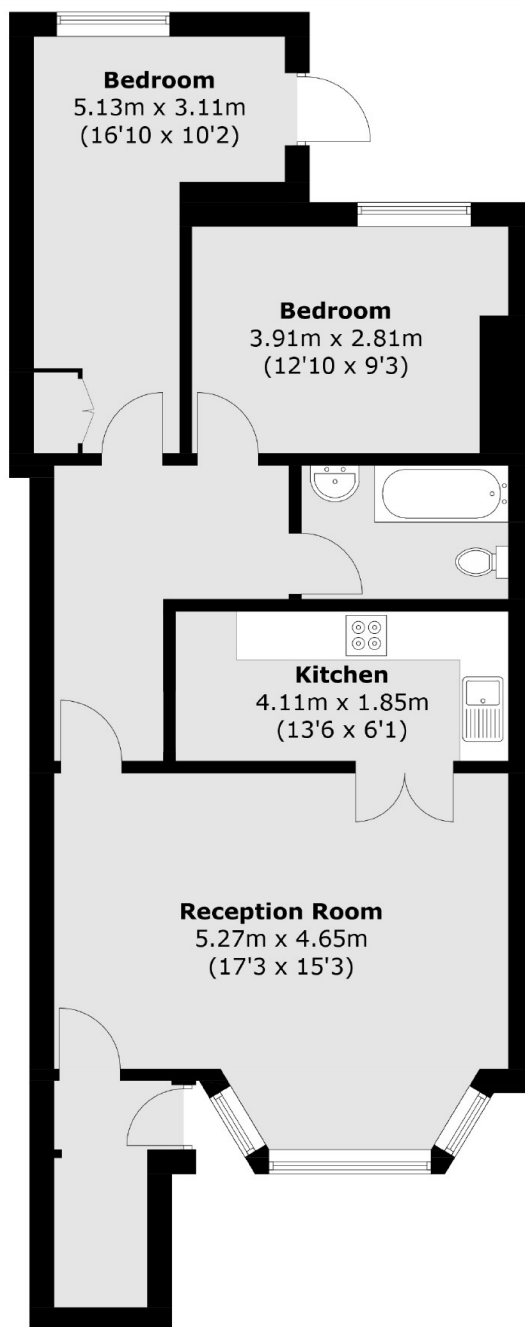
This two bedroom property comes with a semi open plan reception room, kitchen, two double bedrooms, a private garden and neutral decor throughout. Perfect for professional sharers or a couple.

Almost within sight of Clapham North underground station, and just off the High Street, the location could not get better for lively young professionals.

### Features

- Two Double Bedrooms
- Open Plan Reception
- Large Private Garden
- Prime Location
- Neutral Interior
- Close To Transport

# Bedford Road, London, SW4



## Lower Ground Floor

Total area (approx.): 72.1 sq. m (776.1 sq. ft)