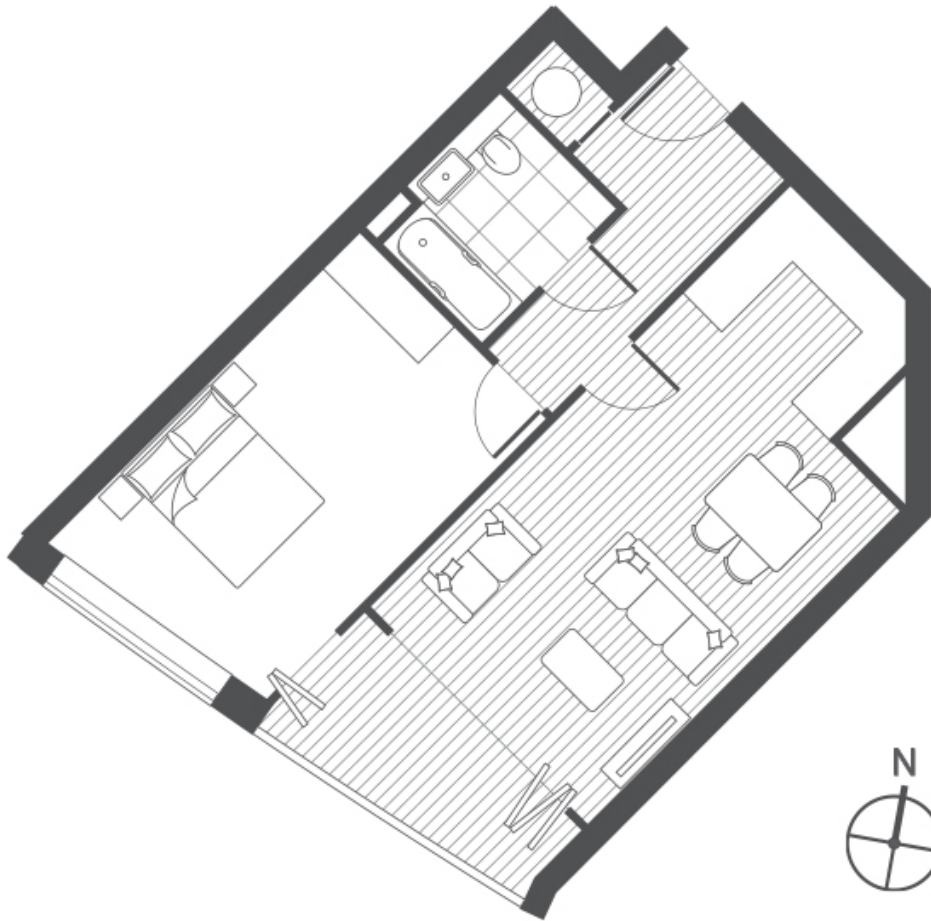


## WESTERN GATEWAY, E16

**£1,900 pcm**

One bedroom apartment in Gateway Tower with spacious layout, modern interiors and city views. Features open plan living area and modern finish throughout.

- One Bedroom
- One Bathroom
- Open Plan
- Wood Flooring
- 1st Floor
- Concierge



Living/dining	5.4 x 3.7 m	17'7" x 12'2"
Kitchen area	2.5 x 1.8 m	8'2" x 5'10"
Bedroom 1	5.3 x 3.2 m	17'3" x 10'5"
Sun Lounge	3.7 x 2.0 m	12'2" x 6'6"
<b>Internal area</b>	<b>59.8 sq m</b>	<b>643 sq ft</b>

**LiFE RESIDENTIAL**

16 Royal Crest Avenue,  
London, E16 2TQ  
Sales: 020 3846 3332  
Lettings: 020 3846 3311

Energy Rating: B. We aim to make our particulars both accurate and reliable. However they are not guaranteed; nor do they form part of an offer or contract. If you require clarification on any points then please contact us, especially if you're traveling some distance to view. Please note that appliances and heating systems have not been tested and therefore no warranties can be given as to their good working order.