

**Oakwood Court**  
West Kensington, W14

**Dexters**



## About the property

A spectacular family apartment with high ceilings and period features, located in one of the most prestigious Edwardian mansion blocks in the Royal Borough of Kensington and Chelsea.

Coming to the market for the first time in almost 30 years and measuring nearly 2,500 sq ft, it includes a large non-demised decked terrace.

At the front are spacious dining and reception rooms, each with ornate cornicing, wooden floors, and a feature

fireplace. The separate kitchen is fully equipped to a high specification, with space to dine. Within the lateral layout are five bedrooms, two bathrooms, and a utility room. The building features porters, lifts, and attractive communal gardens, creating a comfortable and secure environment.

Oakwood Court leads off Abbotsbury Road, ideally situated a short walk from Kensington High Street and the green spaces of Holland Park. Nearby are excellent schools, shops, boutiques, and convenient transport links.





## Key features

- Five Bedrooms
- Two Bathrooms
- Two Reception Rooms
- Eat in Kitchen
- Period Features
- Non Demised Terrace





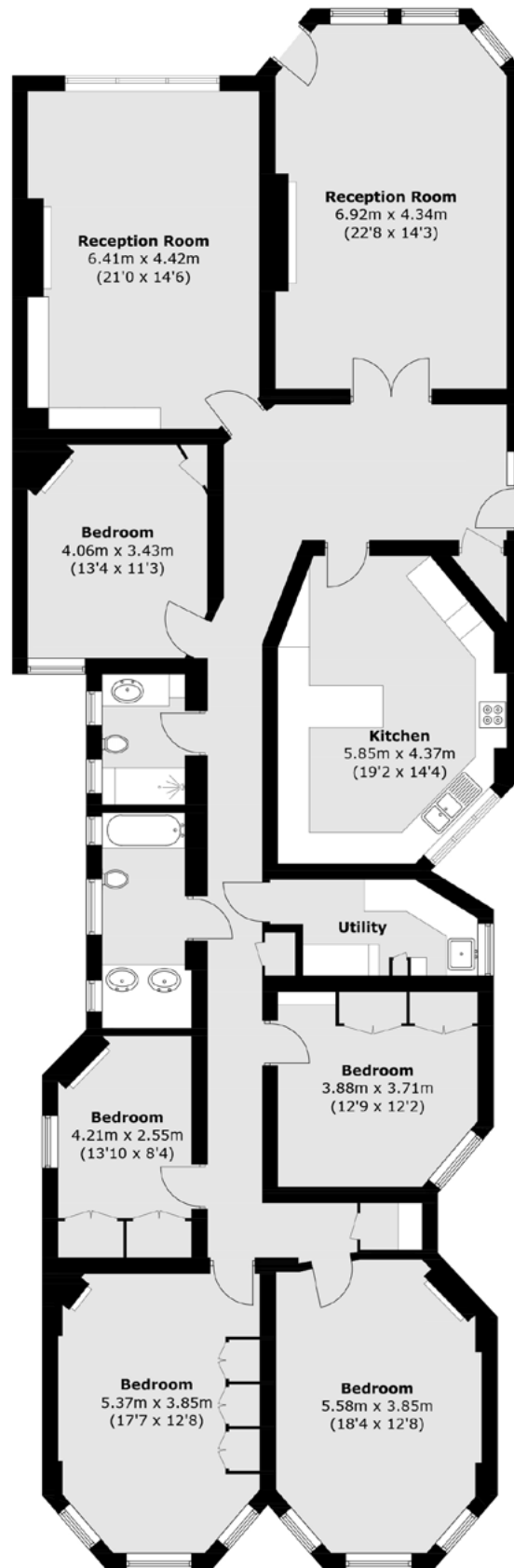












TOTAL APPROX. FLOOR AREA 2,449.9 SQ. FT (227.9 SQ. M)

Energy Rating: D. We aim to make our particulars both accurate and reliable. However they are not guaranteed; nor do they form part of an offer or contract. If you require clarification on any points then please contact us, especially if you're traveling some distance to view. Please note that appliances and heating systems have not been tested and therefore no warranties can be given as to their good working order.



Dexters Westbourne Grove  
120 Westbourne Grove,  
London, W11 2RR  
020 7313 3600

# Dexters