



Cloudesley Road, N1

£1,675,000

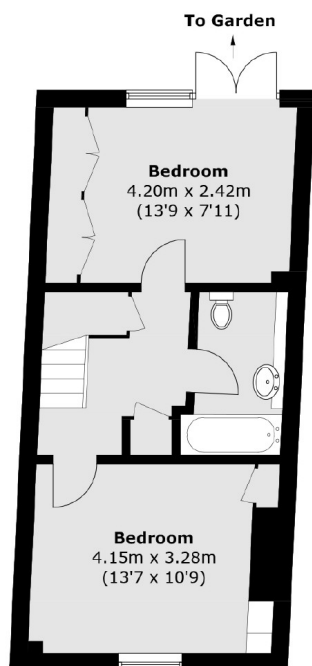
A rare opportunity to acquire a characterful house in prime-Barnsbury. Entering on the raised ground floor there is a double reception room leading onto a west facing terrace. The lower ground floor has a large bathroom, two double bedrooms, one of which provides access to the patio garden. The kitchen is located on the first floor along with an additional reception room, great space for entertainment. The master bedroom is located on the second floor along with a large family bathroom, the top floor comprises of a bedroom with an en-suite.

The property is ideally located between Liverpool Road and Barnsbury Road, offering easy access to Angel (Northern Line), Highbury & Islington (Victoria Line & National Rail) and King's Cross/St Pancras is only one stop away for national and European travel. Upper Street's vibrant shops, restaurants, and bars are just a short walk away, while acclaimed local pubs such as The Albion and The Drapers Arms are close at hand.

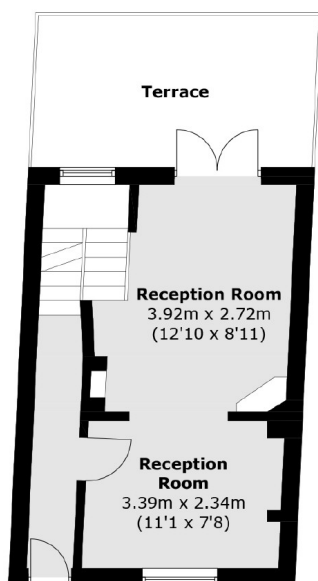
Features

- Grade II Listed
- Freehold
- Four Bedrooms
- Three Bathrooms
- West Facing Patio Garden
- West Facing Terrace
- Chain Free

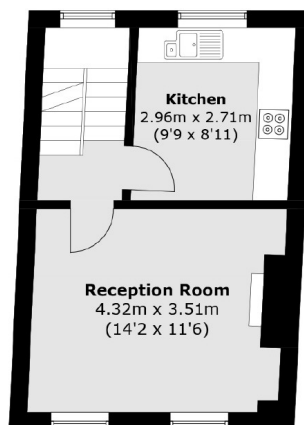
Cloudesley Road, London, N1



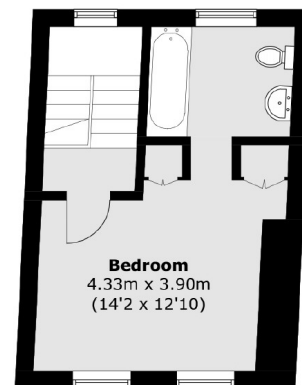
Lower Ground Floor



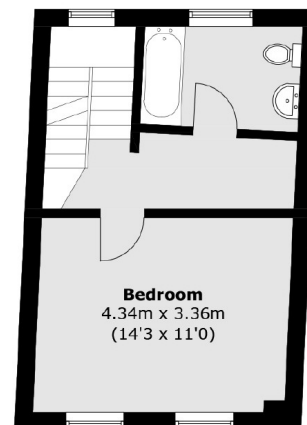
Raised Ground Floor



First Floor



Third Floor



Second Floor

Total area (approx.): 151.7 sq. m (1,632.7 sq. ft)
Terrace: 12.7 sq. m (136.7 sq. ft)