



15 Wheatfield Crescent, Mansfield Woodhouse

£220,000 Freehold

DORMER BUNGALOW • THREE/FOUR BEDROOMS • FAMILY BATHROOM AND EN-SUITE SHOWER ROOM. EPC RATING: B •
 SPACIOUS VERSATILE LIVING • SOUGHT AFTER LOCATION, SITUATED CLOSE TO NEARBY AMENITIES • DRIVEWAY
 OFFERING OFF ROAD PARKING • VIEWING ESSENTIAL, EPC RATING:



41 Albert Street, Mansfield, NG18 6AN
 Sales: 01623 627 247
 email: enquiries@johnsankey.com

**John
Sankey**

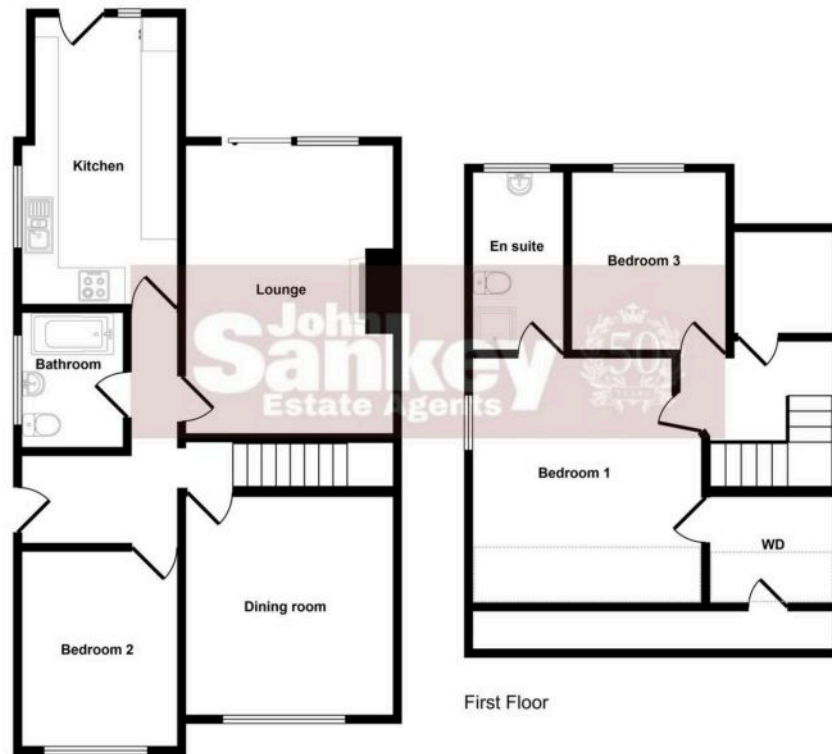







You can include any text here. The text can be modified upon generating your brochure.





First Floor

Ground Floor

 Denotes head height below 1.5m

This floorplan is only for illustrative purposes and is not to scale. Measurements of rooms, doors, windows, and any items are approximate and no responsibility is taken for any error, omission or mis-statement. Icons of items such as bathroom suites are representations only and may not look like the real items. Made with Made Snappy 360.

You can include any text here. The text can be modified upon generating your brochure.



41 Albert Street, Mansfield, NG18 6AN
 Sales: 01623 627 247
 email:enquiries@johnsankey.com

John Sankey

