



Lindfield Drive | | Hailsham | BN27 2DL

Price £210,000



Lindfield Drive |  
Hailsham | BN27 2DL  
Price £210,000

Nestled in the charming area of Hailsham, this delightful 1 bedroom end-terrace house on Lindfield Drive offering a driveway with off road parking for 2 vehicles in tandem, extended kitchen/diner and private front and rear gardens.

- Cosy 1-bedroom end of terrace
- Modern bathroom design
- Ideal for first-time buyers
- Viewing highly recommended
- Spacious kitchen/diner
- Close to Hailsham amenities
- Quiet residential area
- Private Driveway

Lounge  
11' 11" x 11' 8" (3.63m x 3.55m)

Kitchen  
16' 8" x 12' 3" (5.09m x 3.73m)

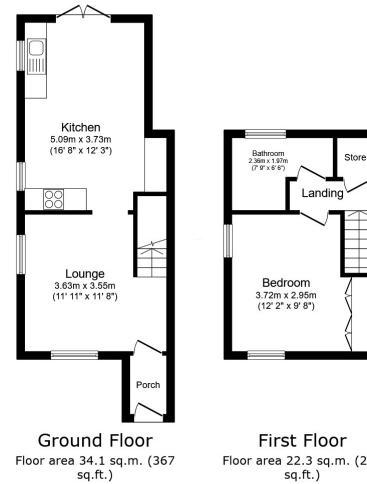
Bedroom  
12' 2" x 9' 8" (3.72m x 2.95m)

Bathroom  
7' 9" x 6' 6" (2.36m x 1.97m)

Rear Garden



24 Lindfield Drive, Hailsham, BN27 2DL



This floor plan is for illustrative purposes only. It is not drawn to scale. Any measurements, floor areas (including any total floor area), openings and orientations are approximate. No details are guaranteed, they cannot be relied upon for any purpose and do not form any part of any agreement. No liability is taken for any error, omission or misstatement. A party must rely upon its own inspection(s). Powered by www.propertybox.io

Energy Efficiency Rating		Current	Potential
<i>Very energy efficient - lower running costs</i>			
(92 plus)	A		
(81-91)	B		89
(69-80)	C		
(55-68)	D	66	
(39-54)	E		
(21-38)	F		
(1-20)	G		
<i>Not energy efficient - higher running costs</i>			
<b>England &amp; Wales</b>		EU Directive 2002/91/EC	

Council Tax Band B  
EPC Rating D

6 George Street  
Hailsham  
East Sussex  
BN27 1AE  
01323 844845  
sales@batesandco.co.uk  
www.batesandco.co.uk