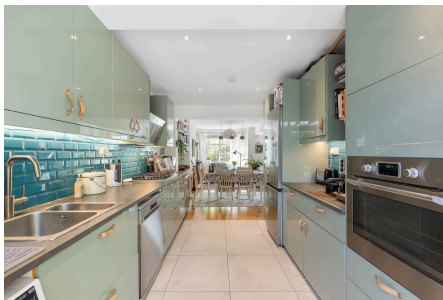




## Fieldview, Earlsfield, SW18

Guide Price £700,000 - £775,000

3 2 1



PLEASE SELECT 3 FOR JONATHAN ON CALLING - GUIDE PRICE £700K - £775K – Beautiful three bedroom ground floor apartment (1,002 Sq.Ft) with private front and rear gardens, and share of the freehold, ideally situated just a short walk from transport links and fashionable amenities.

The property offers bright and spacious accommodation with character appeal and modern interiors throughout – the perfect blend of comfort and convenience in this fantastic Earlsfield location. Features include an impressive open plan reception/kitchen, two contemporary style bath/shower rooms (one en-suite), quality flooring, inbuilt storage, gas central heating, and double glazing.

**Jonathan Woods**

[jonathanwoods.exp.uk.com](http://jonathanwoods.exp.uk.com)

[jw@jonathanwoodsrealestate.com](mailto:jw@jonathanwoodsrealestate.com)

07498 214 463



## Key Features

- PLEASE SELECT 3 FOR JONATHAN ON CALLING
- POPULAR EARLSFIELD LOCATION
- BRIGHT AND SPACIOUS RECEPTION/KITCHEN 2 BATH/SHOWER ROOMS (1 EN-SUITE)
- PRIVATE FRONT AND REAR GARDENS
- CLOSE TO EARLSFIELD STATION
- WELL PRESENTED 3 BED, 2 BATH, GROUND FLOOR APARTMENT (1,002 SQ.FT)
- STYLISH INTERIORS
- SHARE OF FREEHOLD
- EASY ACCESS SHOPS, SCHOOLS AND AMENITIES

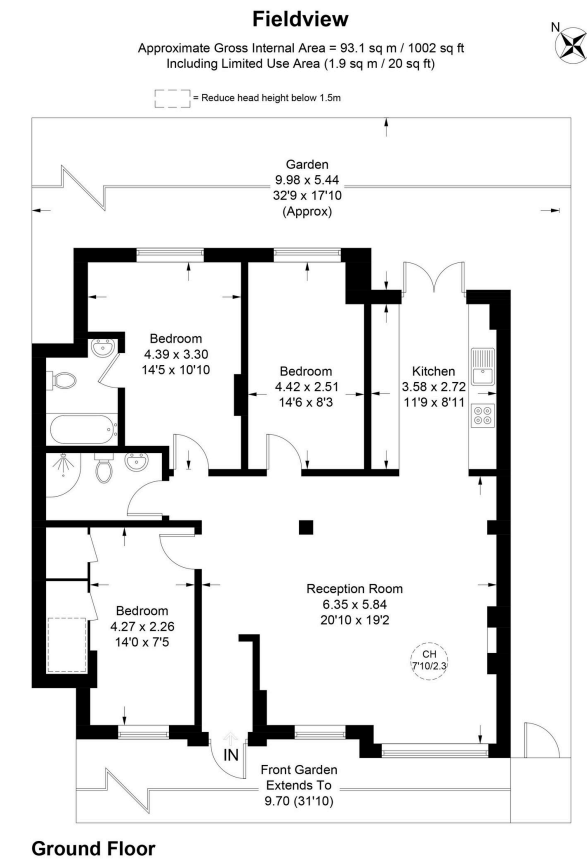


Illustration for identification purposes only, not for valuation purposes, measurements are approximate, not to scale. IPMS2