



St Stephens Gardens

Twickenham, TW1

£8,500 per month
(£1,961.54 per week)

CHESTERTONS



St Stephens Gardens

Twickenham, TW1

- Substantial Family Home
- Six Bedrooms
- Two Bathrooms
- Large Rear Garden
- Off Street Parking
- Extended Kitchen/Family Room
- Local Amenities

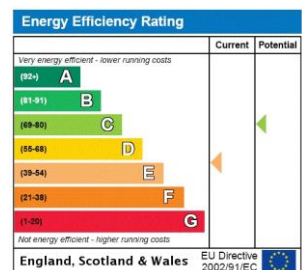


An elegant and substantial six bedroom semi-detached Edwardian house in one of St. Margaret's premier roads. Spread over three floors, this wonderful family home boasts to the ground floor; an impressive entrance hall; a large front reception room with large bay and period fireplace; a superb extended kitchen / dining / family room with access to the rear garden, modern fully fitted kitchen units, separate utility room and guest WC. To the first floor there are four bedrooms and a family bathroom and then the second floor has the master bedroom with dressing area, further double bedroom and bathroom with rolltop bath and separate shower.

Outside there is a pleasant front garden and off street parking and to the rear a very large south facing garden with several seating areas and mature trees & shrubs.

St Stephens Gardens is one of the area's most iconic roads – perfectly nestled in the heart of St. Margaret's Village with its many shops, restaurants and areas of natural greenery such as Marble Hill Park. The property is also a short walk from St Margaret's train station, the River Thames and Richmond Town Centre.

Minimum Term: 12 months
Deposit Required: 5 weeks
Local Authority: London Borough of Richmond upon Thames
Council Tax Band: G
EPC Rating: E
Unfurnished

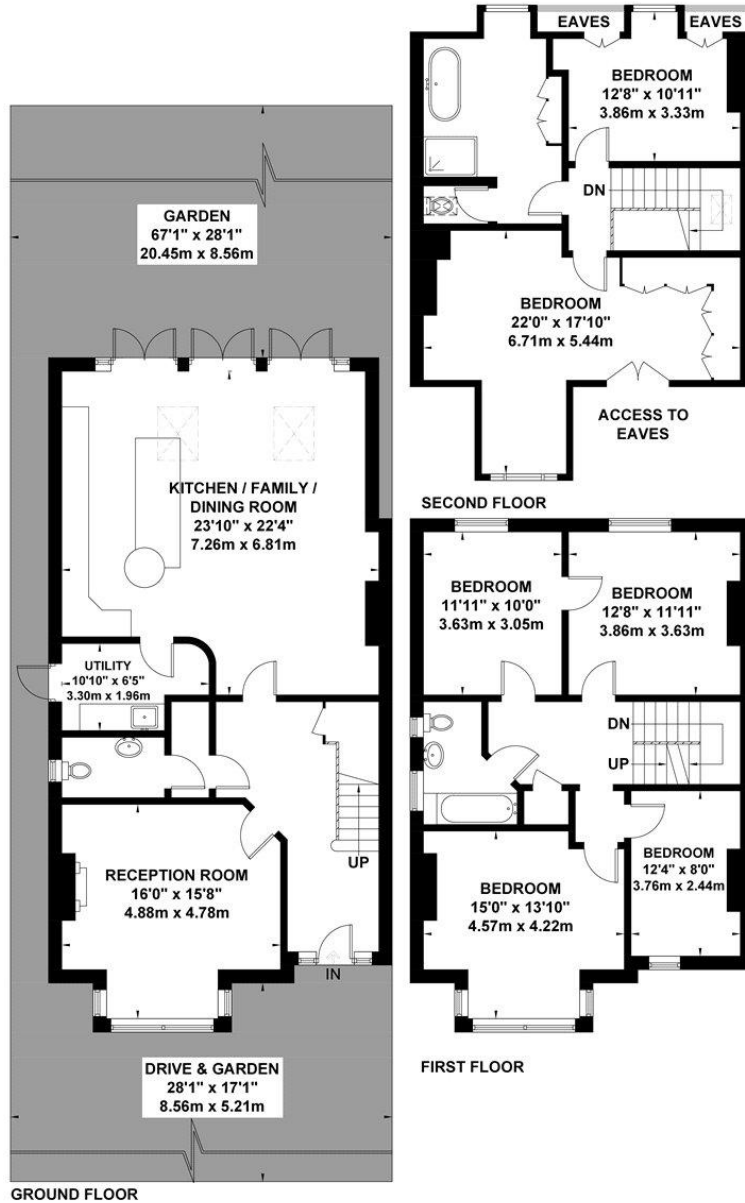


Chestertons Richmond Lettings

23a Friars Stile Road
 Richmond
 Surrey
 TW10 6NH
 richmondlettingsusers@chestertons.co.uk
 02037583333
 chestertons.co.uk

St Stephens Gardens

Approximate Gross Internal Area
 Ground Floor = 95.9 sq m / 1032 sq ft
 First Floor = 71.6 sq m / 770 sq ft
 Second Floor = 59.6 sq m / 641 sq ft
 Total = 227.1 sq m / 2443 sq ft
 (Excluding Eaves Storage)



Viewmedia @ 2021
 Viewmedia.co.uk

Whilst every attempt has been made to ensure the accuracy of this floor plan, measurements of doors, windows and rooms are approximate and no responsibility is taken for any error or omission. This illustration is for identification purpose only. Measured and drawn accordance with RICS guidelines. Not drawn to scale, unless stated. Dimensions shown are to the nearest 3" and are to the points indicated by the arrow heads.

