



# Consort Rise House

203 Buckingham Palace Road,

£6,933.33 per month  
(£1,600 per week)

The property has been refurbished to a very high standard with great attention to detail and comprises a good size open plan reception and kitchen, three double bedrooms (master with en-suite) and further bathroom.



# Consort Rise House

203 Buckingham Palace Road,

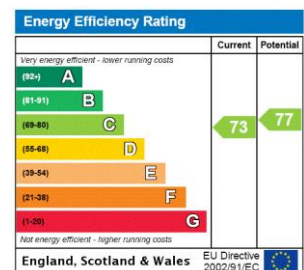
- Three Double Bedroom
- Underground Parking
- 24hrs Porter
- Two Bathroom
- Excellent Location





An immaculately presented top apartment benefitting from fabulous views of the London skyline and air conditioning. The property has been refurbished to a very high standard with great attention to detail and comprises a good size open plan reception and kitchen, three double bedrooms (master with en-suite) and further bathroom. The apartment has ample storage and has the added bonus of a balcony. Further benefits include a 24 hour concierge and secure underground parking.

**Minimum Term:** months  
**Deposit Required:** £0.00  
**Local Authority:**  
**Council Tax Band:**  
**EPC Rating:** C  
**Furnished**



### Chestertons Westminster & Pimlico Lettings

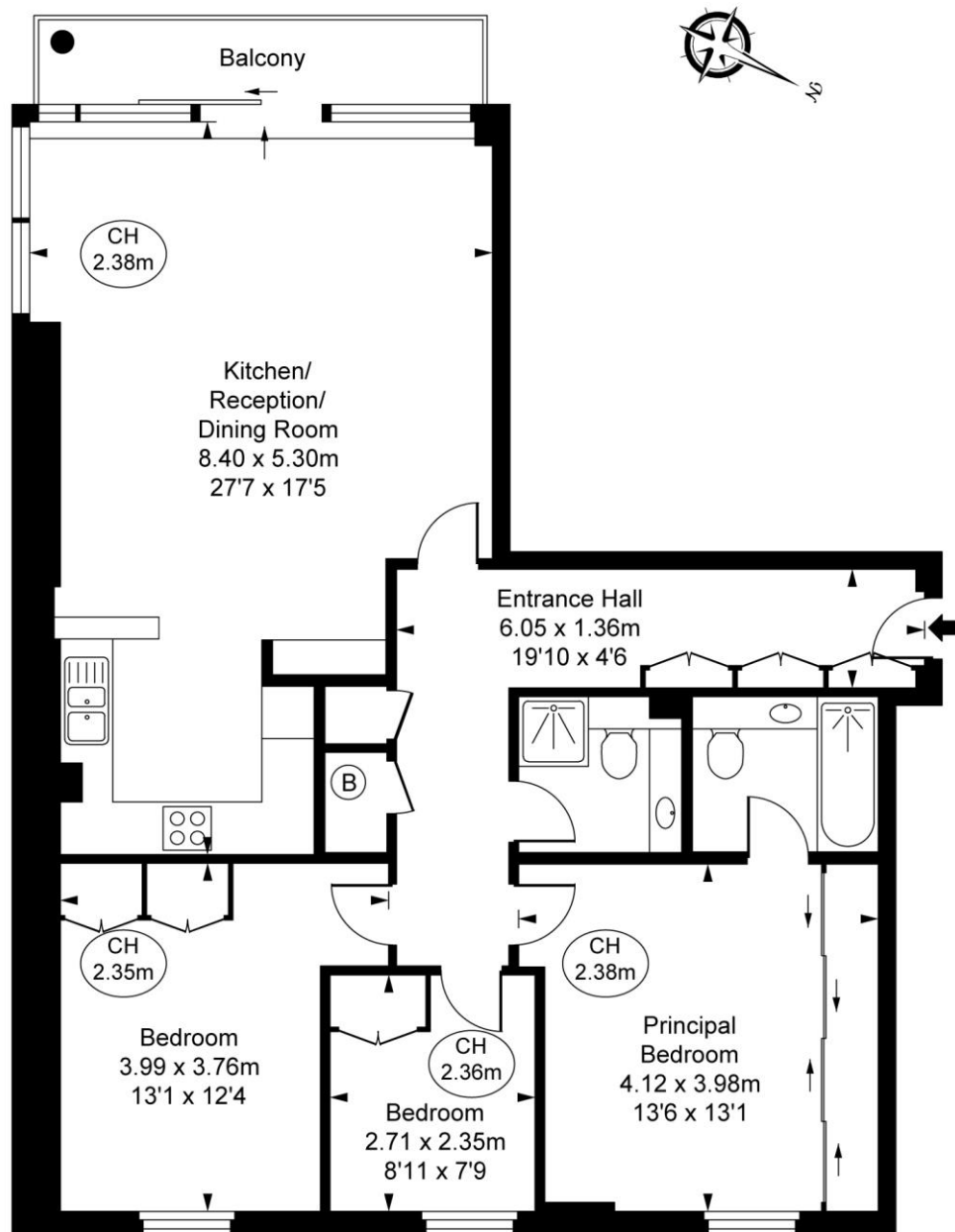
105 Wilton Road  
 London  
 SW1V 1DZ  
[lettings.westminster@chestertons.co.uk](mailto:lettings.westminster@chestertons.co.uk)  
 02030408220  
[chestertons.co.uk](http://chestertons.co.uk)

Additional tenant charges apply (fees apply to non-AST tenancies only)  
 Tenancy Agreement Fee: £300  
 References per Tenant/Guarantor: £60  
 Inventory check (approx. £100 – £250 inc. VAT)  
[chestertons.co.uk/property-to-rent/applicable-fees](http://chestertons.co.uk/property-to-rent/applicable-fees)

Consort Rise House,  
Buckingham Palace Road, SW1W

Approximate Gross Internal Area  
96.09 sq m / 1,034 sq ft

( CH = Ceiling Heights )



Seventh Floor

This plan is not to scale. It is for guidance and not for valuation purposes.  
All measurements and areas are approximate only, and have been prepared in accordance with the current edition of the RICS Code of Measuring Practice.  
© Fulham Performance

