



## Eardley Road, SW16

£499,995

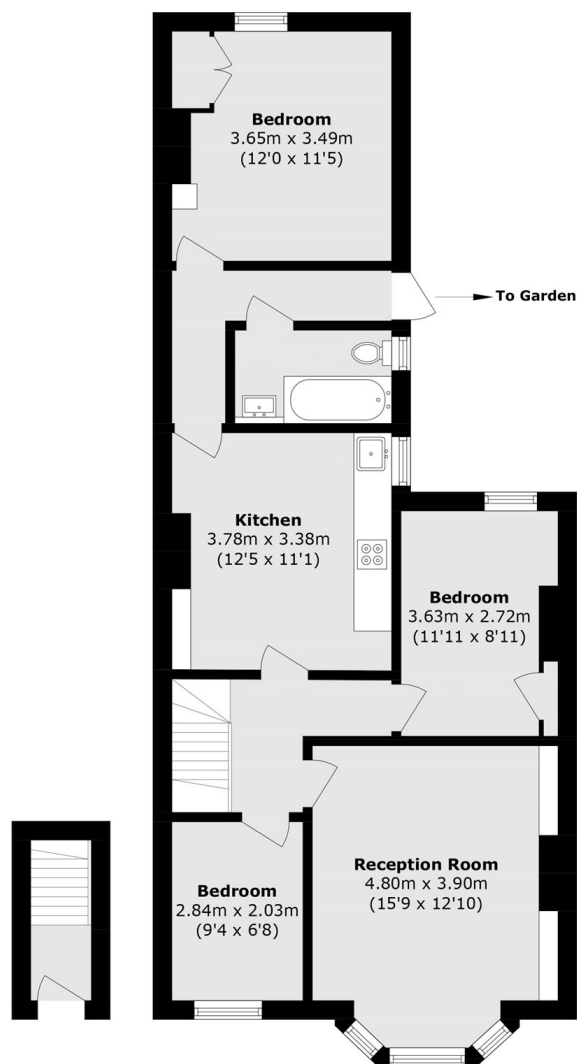
This spacious three bedroom first floor maisonette offers over 841 sq ft of well presented living accommodation. The property features a large kitchen/diner ideal for family living and entertaining, along with a private garden providing excellent outdoor space. Conveniently located close to local amenities, schools, and transport links, this home is perfectly suited for families, first time buyers, or investors alike.

Ideally situated on Eardley Road, the property is perfectly positioned for excellent transport links into Clapham Junction, London Victoria and London Bridge via both Streatham Common railway station and Streatham railway station. The open green spaces of Tooting Bec Common and Streatham Common are both within easy walking distance, alongside a fantastic selection of local pubs, independent shops, cafés and restaurants nearby.

### Features

- Three Bedrooms
- Over 841 Sq Ft
- Own Front Door
- Large Kitchen/Diner
- Private Garden
- Convenient Location

# Eardley Road, London, SW16



**Ground Floor**

**First Floor**

Total area (approx): 78.2 sq. m (841.7 sq. ft)