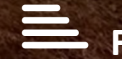




Elderbrook Peatons Lane
Lytchett Matravers, Poole, BH16 6HW

£840,000



Elderbrook Peatons Lane

Lytchett Matravers, Poole, BH16 6HW

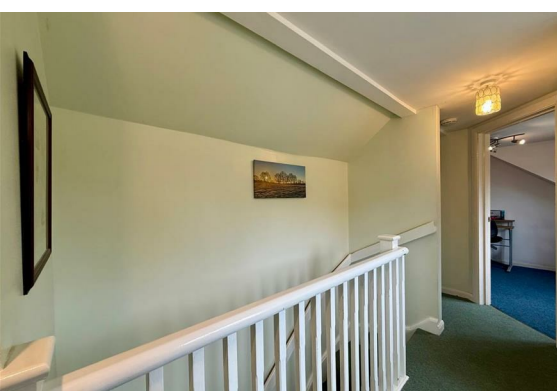
Delightfully located in the picturesque rural setting of Peatons Lane, Lytchett Matravers, this impressive detached chalet bungalow, attached stables/ workshop (no grazing land - a circa 1 acre paddock can be purchased separately) offer a perfect blend of spacious living and serene countryside views. With six well-appointed bedrooms and five bathrooms, this property is ideal for families seeking both comfort and convenience.

Upon entering, you are greeted by a welcoming hallway that features useful under-stairs storage and a cloakroom with a WC. The ground floor boasts three generous double bedrooms, each with its own en-suite bathroom, ensuring privacy and ease for family members or guests. A study provides a quiet space for work or study, while the expansive living room, complete with an eco-stove, features a large window that overlooks the beautifully maintained garden. Double glazed French doors lead out to a south-facing patio, perfect for enjoying sunny afternoons.

The heart of the home is the split-level family kitchen and dining area, which is equipped with modern amenities including a Range Master cooker, a Quooker tap, and an American fridge freezer. There is ample space for a dishwasher, washing machine, and tumble dryer, making daily chores a breeze.

On the first floor, a spacious landing area offers delightful views over the front of the property. Here, you will find three additional bedrooms, two of which have en-suite facilities, along with a further shower room for added convenience.





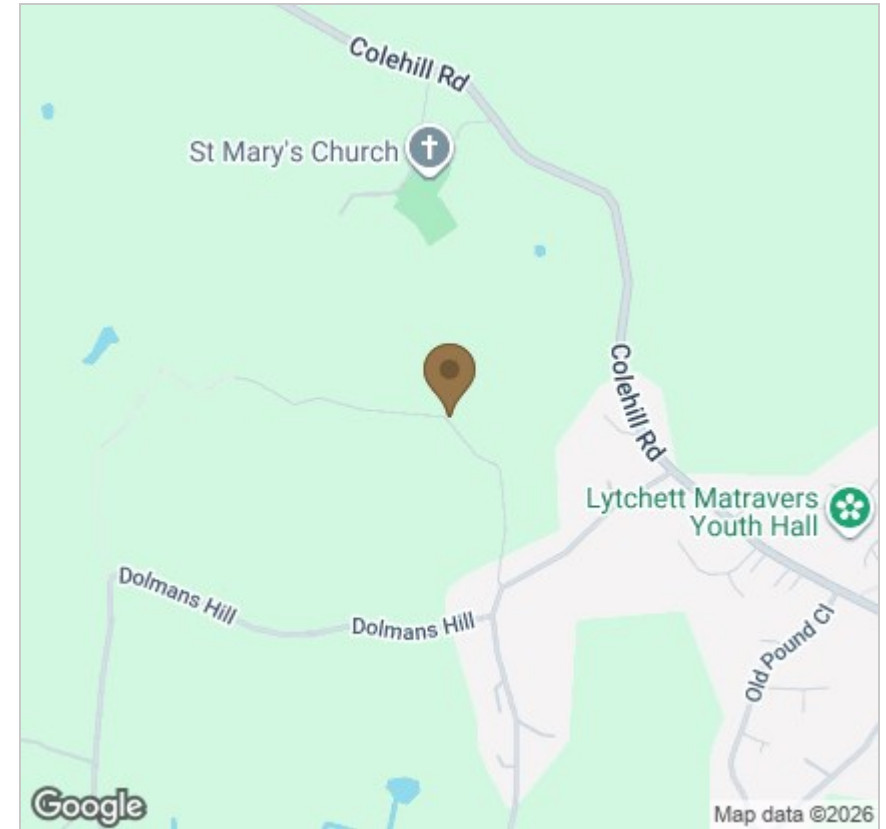
Floor Plan



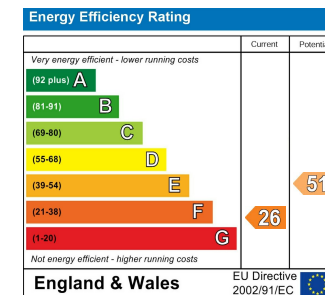
Viewing

Please contact our StQ Property Group Office on 01202877123 if you wish to arrange a viewing appointment for this property or require further information.

Area Map



Energy Efficiency Graph



These particulars, whilst believed to be accurate are set out as a general outline only for guidance and do not constitute any part of an offer or contract. Intending purchasers should not rely on them as statements of representation of fact, but must satisfy themselves by inspection or otherwise as to their accuracy. No person in this firm's employment has the authority to make or give any representation or warranty in respect of the property.