



parkinsonfarr  
estate agents

Under Offer



## Lansdowne Grove, Neasden, London, NW10 1PR

£390,000

**TWO BEDROOM GROUND FLOOR FLAT WITH  
PRIVATE GARDEN-CALL NOW!**

Amazing luxurious two bedroom ground floor flat with private garden just minutes from Neasden tube station and moments from Gladstone Park. The property comprises of a large living room, fitted kitchen with doors to paved area and garden, two double bedrooms, modern bathroom and access to a private garden. Nearest tube station is Neasden (Jubilee Line).



To enquire or arrange a viewing call  
020 8459 4555.

[www.parkinsonfarr.co.uk](http://www.parkinsonfarr.co.uk)



- Conversion
- 2 Beds + 1 Reception
- 1 Bathroom
- Shower
- Energy Rating : D
- Council Tax Band C
- No special accessibility
- No Parking

Directions



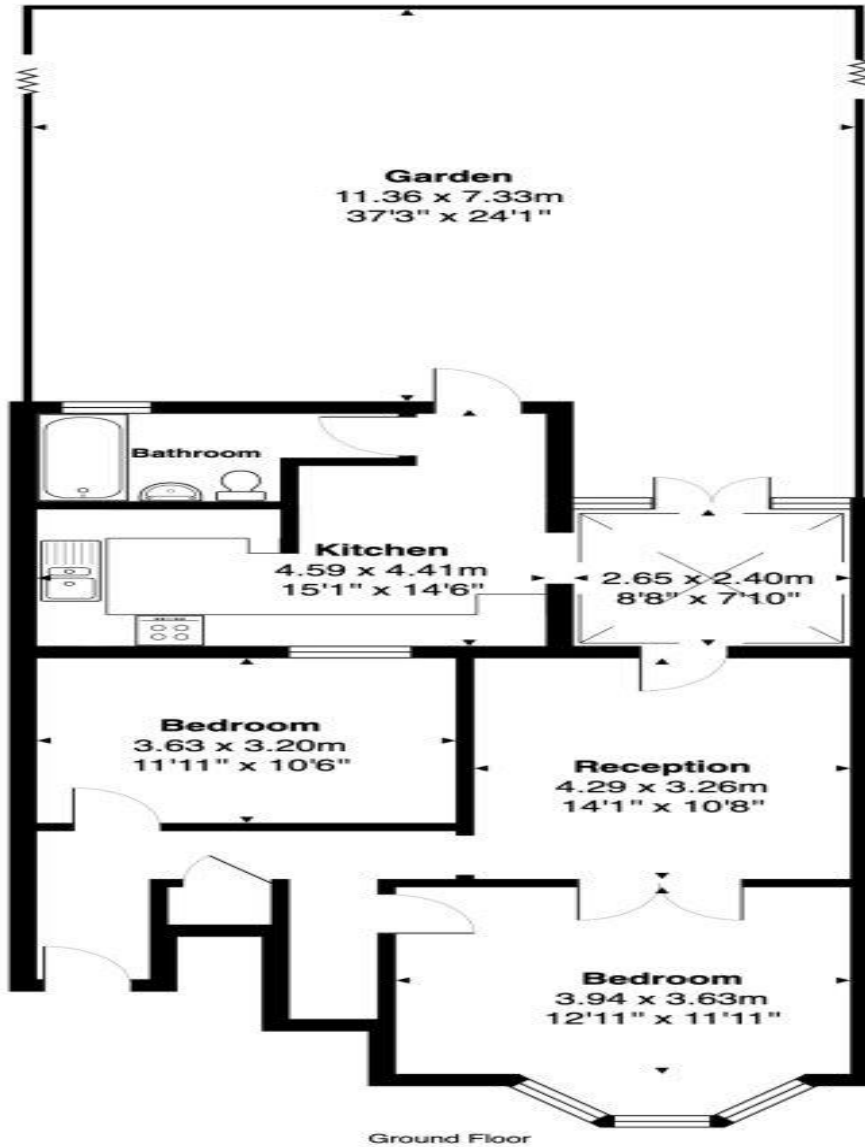


Certificate Number :

Score	Energy rating	Current	Potential
92+	<b>A</b>		
81-91	<b>B</b>		
69-80	<b>C</b>		77
55-68	<b>D</b>	55	
39-54	<b>E</b>		
21-38	<b>F</b>		
1-20	<b>G</b>		

<https://find-energy-certificate.digital.communities.gov.uk/energy-certificate/>

Lansdowne Grove, LONDON, NW10 1PR



**Total Area: 80.6 m<sup>2</sup> ... 867 ft<sup>2</sup>**

All measurements are approximate and for display purposes only.