

Talman Grove

Stanmore • • HA7 4UQ

Asking Price: £725,000



coopers
est 1986

Talman Grove

Stanmore • • HA7 4UQ

This well-presented four-bedroom, two-bathroom semi-detached home is offered in excellent condition throughout. The property benefits from a ground floor bedroom and bathroom, has been extended to the rear, and offers off-street parking. Externally, it features private front and rear gardens.

Ideally situated, the property is within easy reach of Stanmore's local amenities and provides excellent transport connections to London and the North. Stanmore Underground Station (Jubilee Line) is just a short stroll away, while the A41, M1, and M25 are all conveniently accessible, making it an ideal choice for commuters.

Semi Detached Home

Four Bedrooms

Downstairs Bathroom

Spacious Living Room

Modern family Bathroom

Fitted Kitchen

Downstairs Bedroom

Short Stroll to Stanmore Station

Off Street Parking

Approx 1183 Sq Ft

These particulars are intended as a guide and must not be relied upon as statements of fact. Your attention is drawn to the Important Notice on the last page.

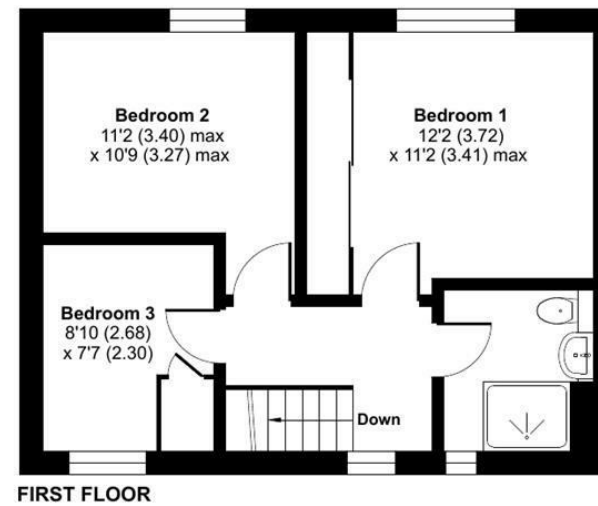
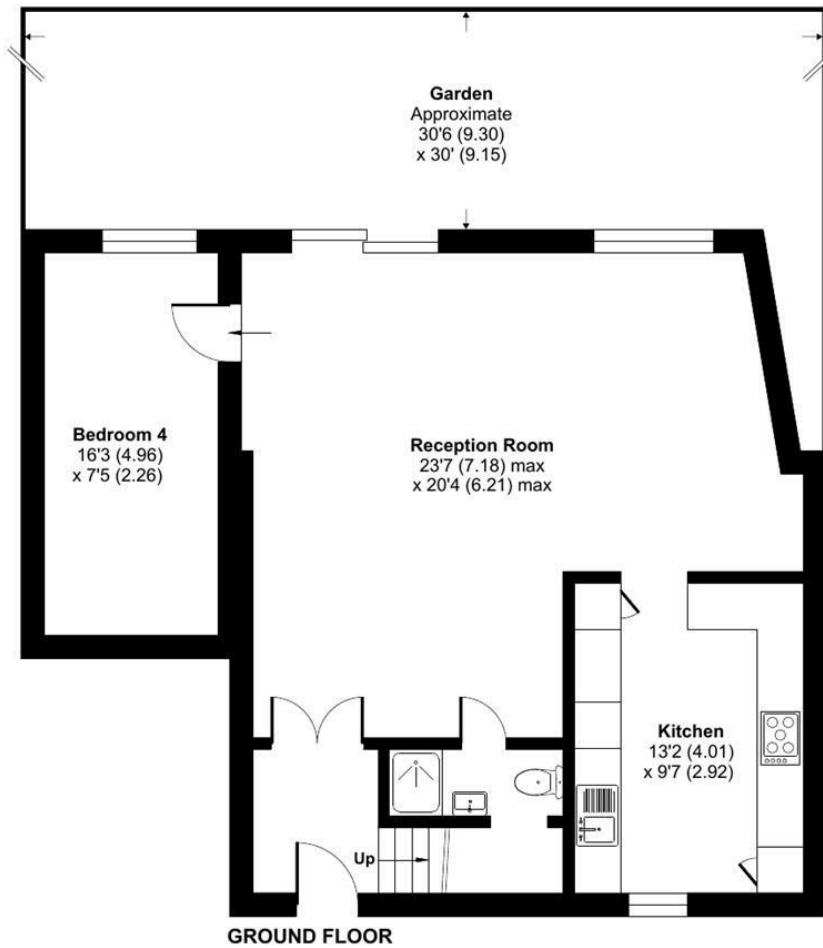




Talman Grove, Stanmore, HA7

Approximate Area = 1183 sq ft / 109.9 sq m

For identification only - Not to scale



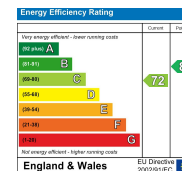
Floor plan produced in accordance with RICS Property Measurement 2nd Edition, Incorporating International Property Measurement Standards (IPMS2 Residential). Produced for Coopers. REF: 1447351 © n|checon 2026.

coopers
est 1986

coopers
est 1986

18 Bridge Street, Pinner,
Middlesex, HA5 3JF
pinner@coopersresidential.co.uk

CoopersResidential.co.uk



Important Notice: These particulars, whilst believed to be accurate are set out as a general outline only for guidance and do not constitute any part of an offer or contract. Intending purchasers should not rely on them as statements or representation of fact, but must satisfy themselves by inspection or otherwise has the authority to make or give any representation or warranty in respect of the property.