



**Price**  
**£900,000**

**Freehold**

4x  2x  4x 

**Chapmans Hill,  
Meopham, Kent, DA13**

**OVER 60?**

Secure this property  
for up to **59% less!**

*Wards*  
Helping you move forwards

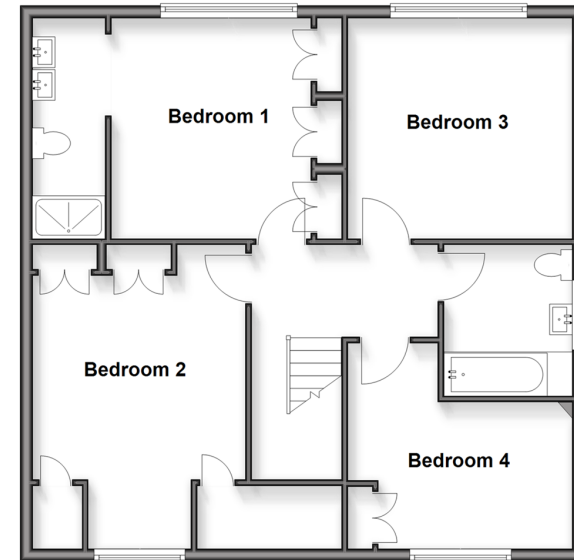
## Ground Floor

Approx. 120.7 sq. metres (1299.2 sq. feet)



## First Floor

Approx. 76.0 sq. metres (818.3 sq. feet)



## Accommodation

### GROUND FLOOR

Entrance Hall

Cloakroom: 7'10 x 4'11 (2.39m x 1.50m)

Lounge : 11'11 x 11'11 (3.63m x 3.63m)

Family Room: 11'11 x 10'11 (3.63m x 3.33m)

Dining Room: 14'9 x 8'7 (4.50m x 2.62m)

Utility Room: 6'9 x 5'0 (2.06m x 1.53m)

Kitchen/Breakfast Area: 19'3 x 15'2 (5.87m x 4.63m)

Sitting Area: 17'0 x 12'0 (5.19m x 3.66m)

### FIRST FLOOR

Landing

Bedroom 1: 12'0 x 10'9 (3.66m x 3.28m)

Ensuite Shower Room

Bedroom 2: 16'1 x 11'11 (4.91m x 3.63m)

Bedroom 3: 12'0 x 12'0 (3.66m x 3.66m)

Bedroom 4: 11'11 x 11'0 (3.63m x 3.36m)

Bathroom: 7'11 x 6'6 (2.41m x 1.98m)

### OUTSIDE

Garage

Driveway

Front Garden

Rear Garden



## Main features

- Exceptional 'Billings' home, extended to the rear creating open plan kitchen/breakfast area
- Impressive frontage with driveway, garage and uninterrupted views across open fields
- Generously proportioned bedrooms and an ensuite shower room
- Sought after residential setting close to highly regarded schools and amenities
- Meopham Station just a short drive away



### Nearest Schools

Primary and Secondary Schools: Culverstone Green Primary 0.4 miles, Vigo Village School 1.2 miles, Meopham Community Primary 1.9 miles, Meopham School 1.5 miles, Helen Allison School 1.9 miles, Wrotham School 3.6 miles, Longfield Academy 3.7 miles



### Transport Information

Train Stations: Meopham 2.7 miles, Sole Street 2.7 miles, Longfield 3.8 miles



### Address

Chapmans Hill, Meopham, Kent, DA13



### Directions

For directions to this property please contact us.



*Wards*  
Helping you move forwards

Call Meopham Branch 01474 813100 ■ [wardsofkent.co.uk](http://wardsofkent.co.uk)



■ Through a Homewise Home For Life Plan people aged 60+ can secure this property for up to 59% less, by purchasing a Lifetime Lease



13326199/20260327/SB/KD