



WIMBLEDON HILL ROAD, SW19

£700,000

Gated development
Two bedrooms
Two bathrooms
Lift service
Secured allocated parking
Energy rating: b

@marshandparsons
marshandparsons.co.uk

MARSH &
PARSONS

ABOUT THE PROPERTY

This spacious, two double bedroom, two bathroom flat with great living space and two superb south facing balconies, is enviably located on Wimbledon Hill, The property comes with allocated parking and is available with no forward chain.

Iona apartments provides quick and easy access to both Wimbledon town centre for frequent transport connections at Wimbledon mainline and underground station and fashionable Wimbledon Village for its independent shops and bars. Nearby Wimbledon Common provides beautiful green spaces and good recreational facilities.







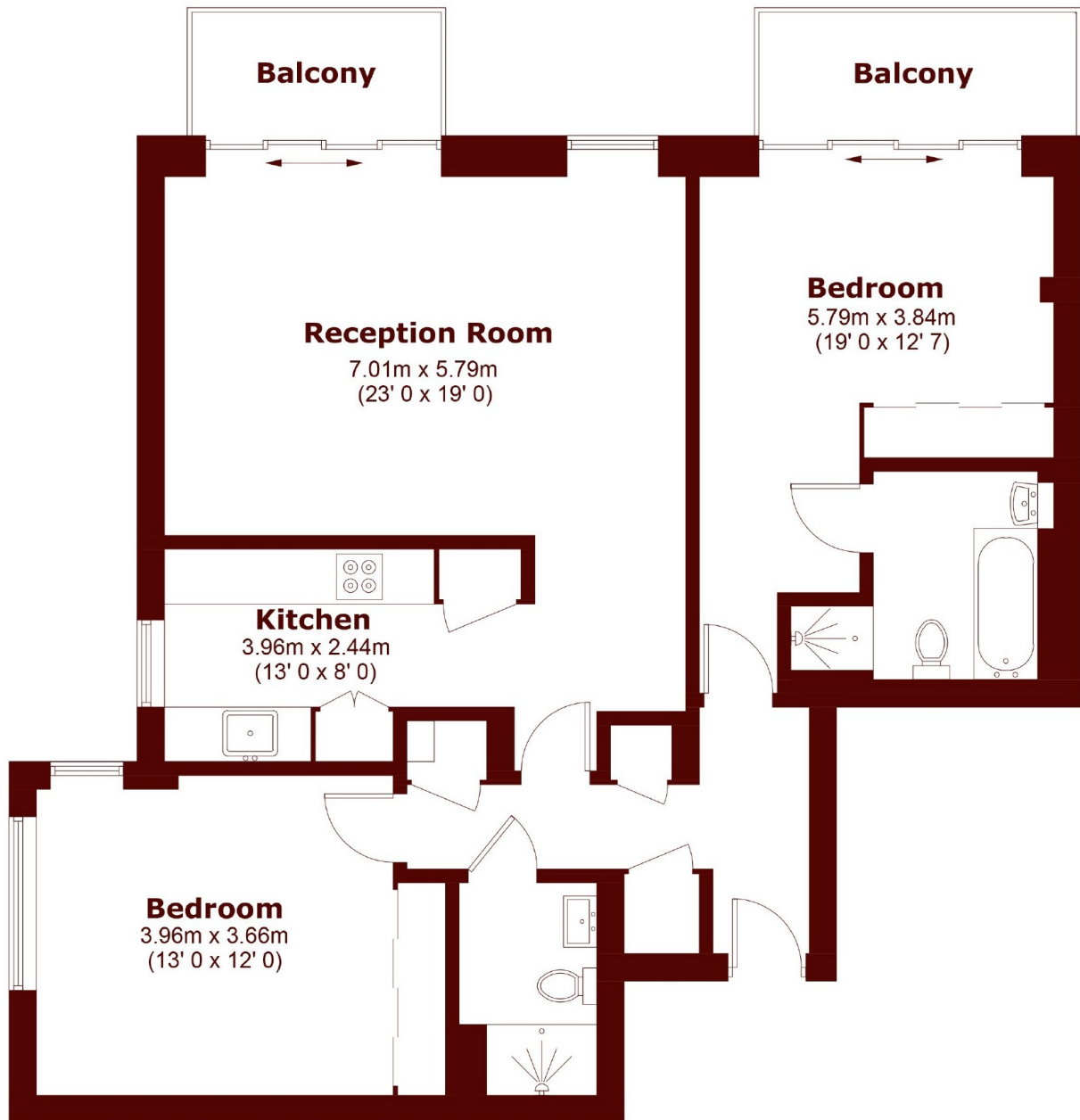
FURTHER DETAILS

This lovely, bright and airy apartment occupies the second floor of this popular development, has attractive wood floors and is neutrally decorated and well-presented throughout. Accommodation includes a 23ft living/entertaining space with full height sliding doors to the balcony. Just behind is a spacious, well-equipped, separate kitchen.

Both bedrooms are genuine doubles with fitted wardrobes, the principal bedroom has its own balcony and en suite bathroom with separate shower cubicle, whilst the second bedroom, situated to the rear, is served by a family bathroom/WC. Ample storage can be found off the entrance hall.



STEP INSIDE WIMBLEDON HILL ROAD



Second Floor

Approximate Gross Internal Area: 91.7 sq m (987 sq ft)

Wimbledon
020 8879 6660

Energy Rating: B We aim to make our particulars both accurate and reliable. However, they are not guaranteed; nor do they form part of an offer or contract. If you require clarification on any points then please contact us, especially if you're traveling some distance to view. Please note that appliances and heating systems have not been tested and therefore no warranties can be given as to their good working order

MARSH &
PARSONS