






the  
**ANDERSON**  
Group exp

# Neath Road, Plasmarl, Swansea, SA6 8JN

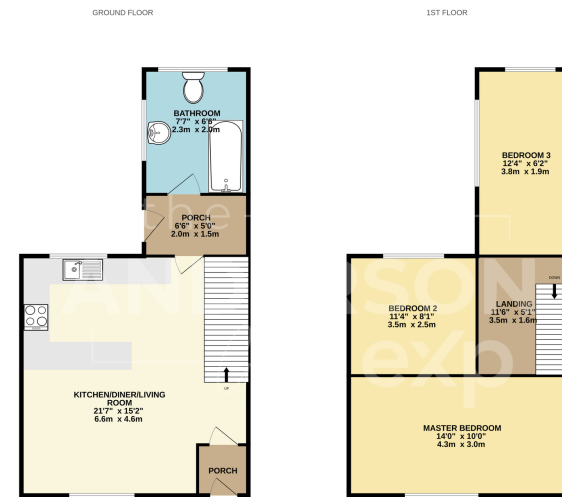
Offers In Region Of £170,000

 3  1  1



- Beautifully Refurbished Three-Bedroom Terraced Home
- Newly Fitted Modern Kitchen
- New Flooring, Carpets, And Décor Throughout
- Rear Garden With Tiered Outdoor Space
- Excellent Access To Swansea City Centre, Shops, Schools, And Transport Links
- Move-In Ready
- Open-Plan Ground Floor Layout
- Modern Family Bathroom
- Gated Off-Road Parking For Two Vehicles To The Rear
- Ideal First Time Purchase, Family Home, or Investment



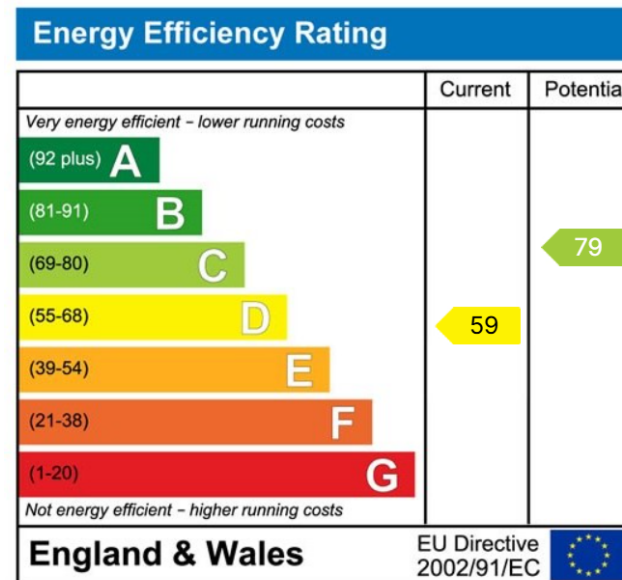


TOTAL FLOOR AREA: (E1) 81.6 (79.6 sq.m) approx.  
While every attempt has been made to ensure the accuracy of the information contained herein, the undersigned, its agents and its employees, shall not be responsible for any errors or omissions, whether in the original or in the reproduced version. The undersigned, its agents and its employees shall not be held liable for any loss or damage, whether in the original or in the reproduced version, arising from the use of the information contained herein. The undersigned, its agents and its employees shall not be held liable for any loss or damage, whether in the original or in the reproduced version, arising from the use of the information contained herein. The undersigned, its agents and its employees shall not be held liable for any loss or damage, whether in the original or in the reproduced version, arising from the use of the information contained herein.

Situated along Neath Road in Plasmarl, Swansea, this beautifully refurbished three-bedroom terraced home offers a fantastic move-in-ready opportunity, ideal for first-time buyers, families, or anyone looking for a home finished to a modern standard.

The property has been tastefully updated throughout, with everything from the boiler, kitchen/diner, flooring, carpets, and décor newly completed, creating a fresh and practical home ready to enjoy from day one. The accommodation includes a welcoming reception room, a modern kitchen/diner, three spacious bedrooms, and a bathroom.

Externally, the property benefits from a rear garden and off-road parking for two vehicles to the rear, a valuable feature in this convenient location. Neath Road provides excellent access to local shops, schools, amenities, Swansea city centre, Morriston, and wider transport links.



07378 741 076

Swansea, Mumbles & Gower

nathaniel.watts@exp.uk.com