



Linwood Close, SE5

£265,000

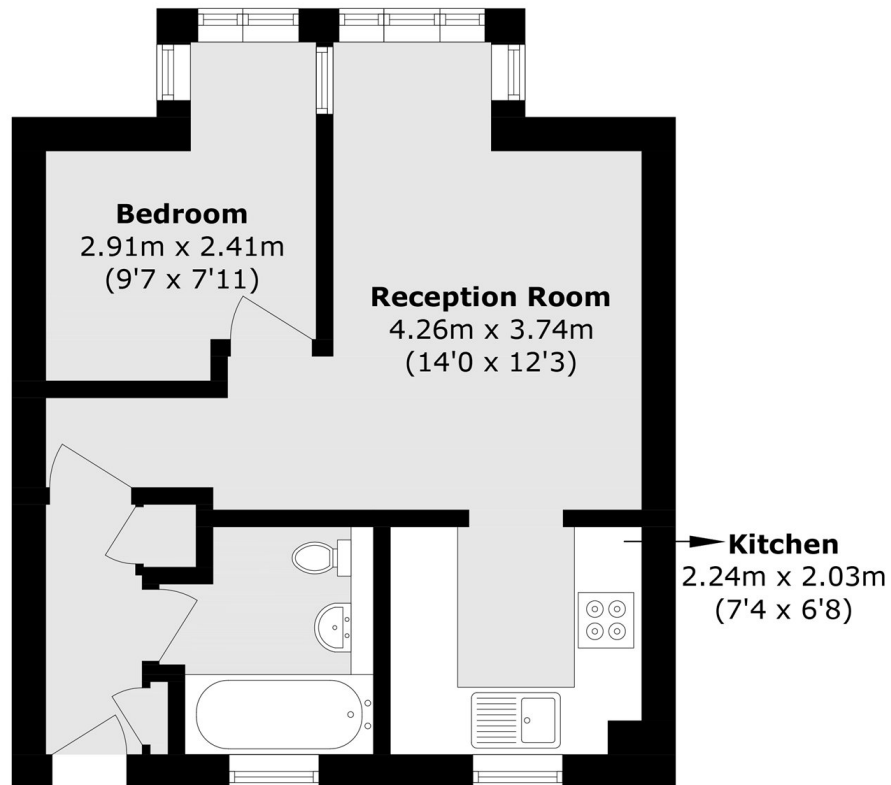
A bright and well presented one bedroom ground floor maisonette set within a quiet residential cul de sac in Linwood Close, SE5. Offering its own private entrance, access to a communal garden, and the rare benefit of private off street parking, this home is ideal for first time buyers, downsizers, or investors seeking strong rental demand in a popular South London location.

Linwood Close is positioned within easy reach of Camberwell, Peckham and East Dulwich, giving access to an excellent mix of cafés, independent shops, parks and local amenities. Denmark Hill Station and Peckham Rye station allows direct links to Victoria, London Bridge, Blackfriars and connections to The City.

Features

- One Bedroom Maisonette
- Ground Floor
- Quiet Private Road
- Private Parking
- Communal Green Spaces
- Long Lease 981 Years

Linwood Close,
London, SE5



Total area (approx.): 31.3 sq. m (336.9 sq. ft)