



27 CARDIFF STREET, ABERDARE, CF44 7DP

TEL: 01685 878000 FAX: 01685 878000



Merthyr Road

Pontwalby, Glynneath, Neath, SA11 5LR

£199,995

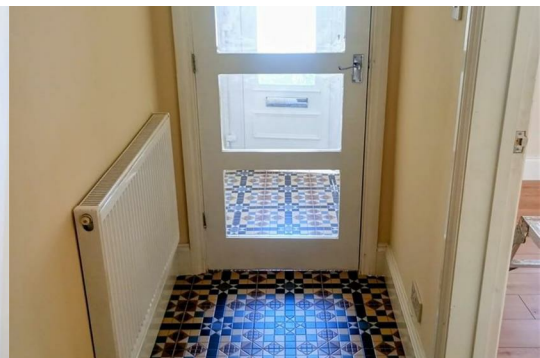
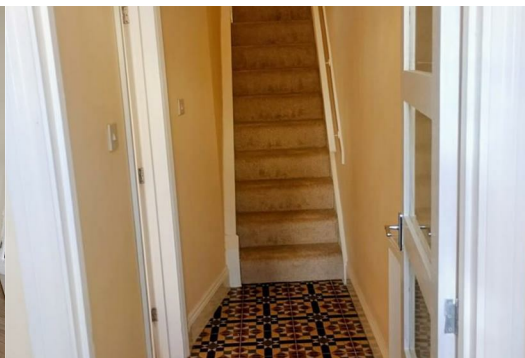


** NO ONWARD CHAIN**

** LOCATED NEAR WATERFALLS AND NATURE WALKS**

Located on Merthyr Road in the charming village of Pontwalby, Glynneath, this recently renovated end of terrace offers a delightful blend of modern living and convenient access to nearby towns. With four well-proportioned bedrooms and two contemporary bathrooms, this end-of-terrace property is perfect for families or those seeking extra space. The location is particularly advantageous, providing easy access to major roads leading to Neath, Merthyr, Aberdare, and Swansea, while still enjoying the tranquillity of village life and nearby Waterfalls. You can relish the benefits of being close to urban amenities without the hustle and bustle of city centre living.

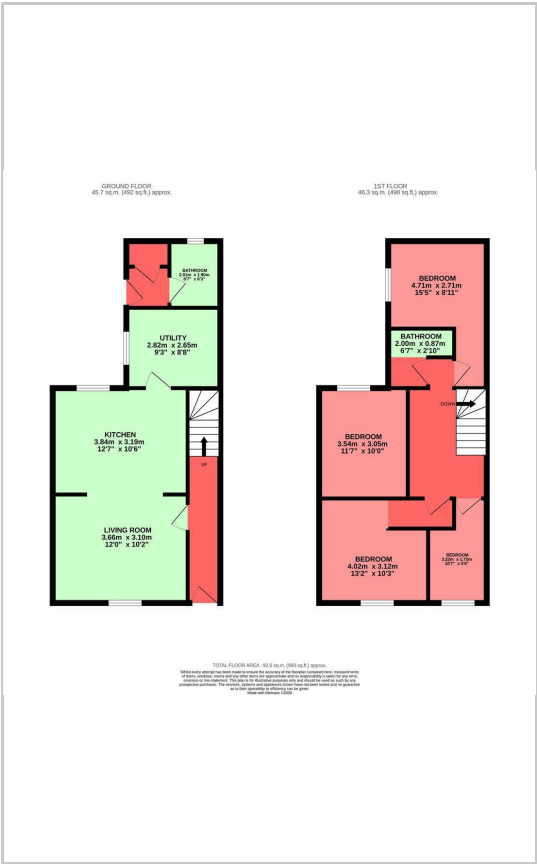
One of the standout features of this property is the off-road parking, accommodating up to two vehicles, which is a rare find in many homes. Additionally, the spacious garden area offers a wonderful outdoor space for relaxation, gardening, or entertaining guests, making it an ideal setting for family gatherings or quiet evenings.



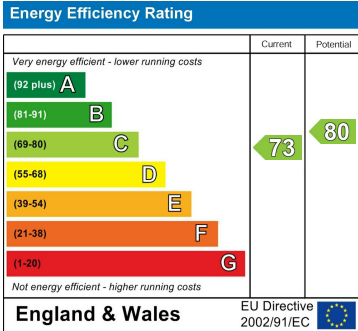
Area Map



Floor Plans



Energy Efficiency Graph



These particulars, whilst believed to be accurate are set out as a general outline only for guidance and do not constitute any part of an offer or contract. Intending purchasers should not rely on them as statements of representation of fact, but must satisfy themselves by inspection or otherwise as to their accuracy. No person in this firm's employment has the authority to make or give any representation or warranty in respect of the property.