



£1,950 PCM

Unfurnished



CAVENDISH
LETTINGS, SALES & PROPERTY MANAGEMENT

Station Road, Borough Green

 Bedrooms: 3

 Bathrooms: 1

 Receptions: 1

- High specification
- 3 Bedrooms
- Garden
- Off street parking for 2 cars
- EPC rating: C
- Council Tax band: D



Energy Efficiency Rating		
	Current	Potential
Very energy efficient - lower running costs		
(92 plus) A		
(81-91) B		
(69-80) C	86	87
(55-68) D		
(39-54) E		
(21-38) F		
(1-20) G		
Not energy efficient - higher running costs		
England & Wales	EU Directive 2002/91/EC	

Well presented semi detached house built in 2016 to a high specification, located in a quiet residential cul-de-sac under 5 minutes walk (0.1 miles) from Borough Green & Wrotham station.

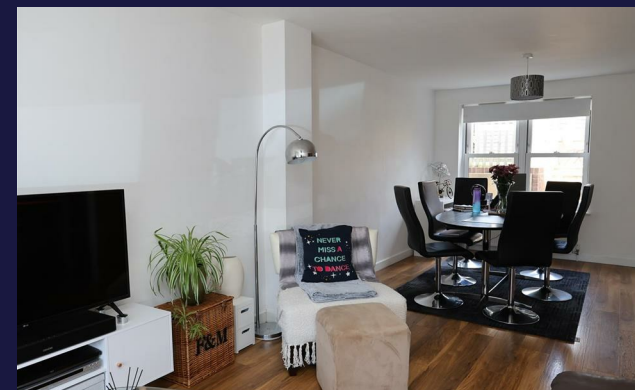
ACCOMMODATION: The accommodation comprises an entrance hall with wood-effect laminate flooring, ground floor W.C and under stairs storage. Spacious reception room with lounge and dining areas through to the fully-fitted kitchen, appliances include a gas hob & electric oven, integrated fridge-freezer and washer-dryer. Master double bedroom with built-in wardrobe. Bathroom with a shower over bath and screen. Second double bedroom and a third single.

OUTSIDE: Rear garden with lawn and shed. Driveway with off-street parking for two cars.

PLEASE NOTE: No pets.

Available: 3rd April, 2026 Unfurnished

EPC rating: C
Council Tax Band: D
Holding Deposit: £450.00 (1 weeks rent)
Deposit Payable: £2,250.00 (5 weeks rent)



Cavendish
2 - 3 The Shambles
Sevenoaks
Kent
TN13 1LJ
01732 464498
mail@cavendish.pro
www.cavendish.pro



CAVENDISH
LETTINGS, SALES & PROPERTY MANAGEMENT