



WATER LANE, EC3R

£12,000 pcm

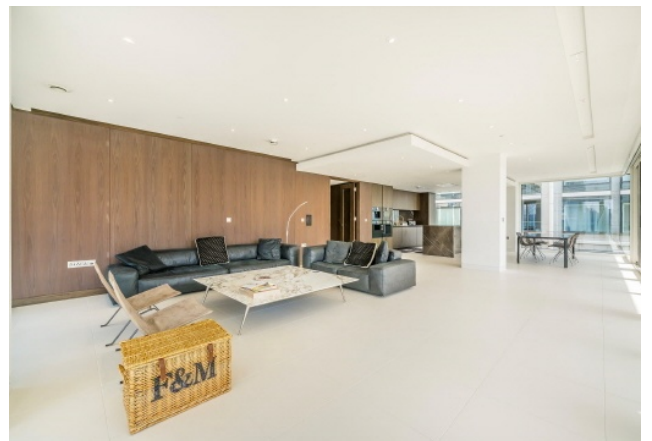
An exceptional three-bedroom, three-bathroom penthouse with a separate study, finished to a high specification throughout. The property offers a spacious open-plan living and dining area, a contemporary fully integrated kitchen, three generous double bedrooms, three luxury bathrooms and a dedicated study, ideal for home working. Offered unfurnished, the apartment

- Three Bedroom & Study
- 65 2 metre wrap around balcony
- Luxury development
- River views
- Three bedroom, three bathroom



ABOUT THE HOME

Ideally located within the prestigious Sugar Quay development in the heart of the City of London, the property is moments from the River Thames, Tower Hill, Monument and Fenchurch Street stations, providing excellent transport links across London. The development is also within easy reach of the City's financial district, St Katharine Docks and a wide selection of restaurants, cafés and riverside walks, making it an outstanding location for both work and leisure.







Seventh Floor

Total area (approx.): 210.4 sq. m (2264.7 sq. ft)

Balcony area (approx.): 66.3 sq. m (731.6 sq. ft)

LIFE RESIDENTIAL

71 Drayton Park, London, N5

1BF

Sales: 020 3838 8666

Lettings: 020 7359 4488

Energy Rating: . We aim to make our particulars both accurate and reliable. However they are not guaranteed; nor do they form part of an offer or contract. If you require clarification on any points then please contact us, especially if you're traveling some distance to view. Please note that appliances and heating systems have not been tested and therefore no warranties can be given as to their good working order.