

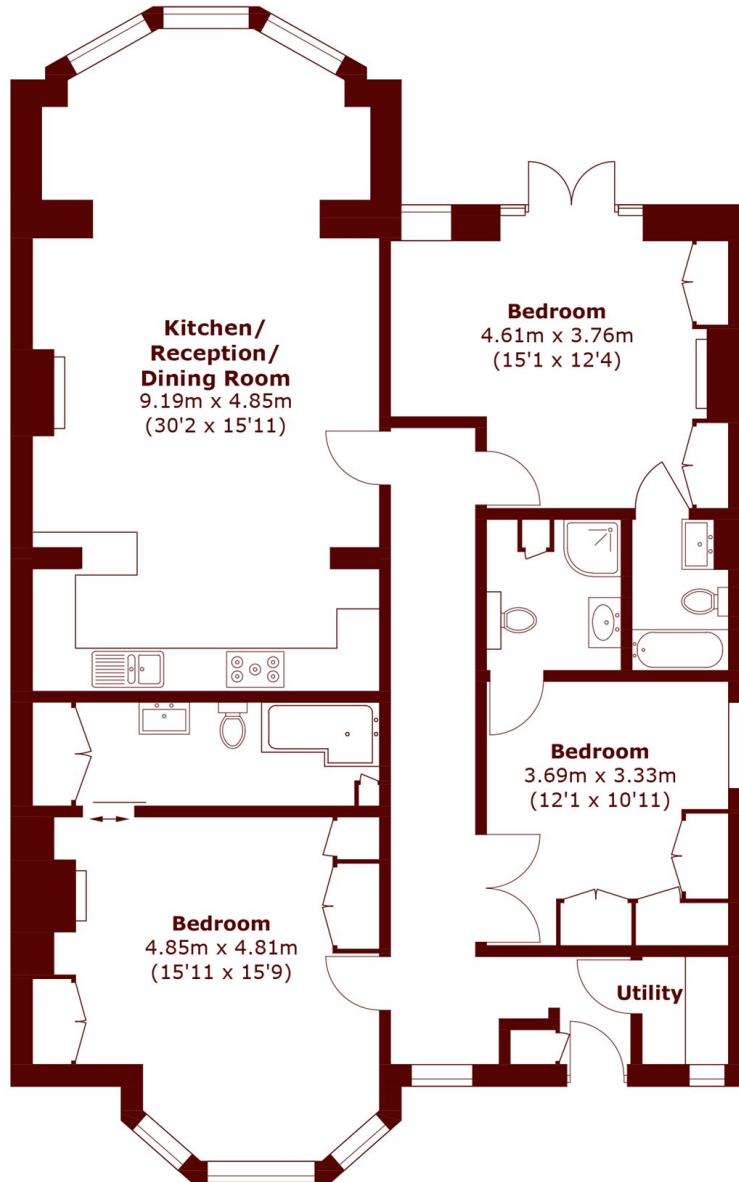


## Gledhow Gardens, SW5

£1,100,000



- Three Double Bedrooms
- Three En Suites
- Garden Flat
- Residents Communal Gardens
- Excellent Location
- Share of Freehold



Total area (approx.): 128.4 sq. m (1382.0 sq. ft)

## Marsh & Parsons South Kensington

29 Harrington Road, London,  
SW7 3HD  
020 7590 0800