



## Elver Gardens, E2

£500,000

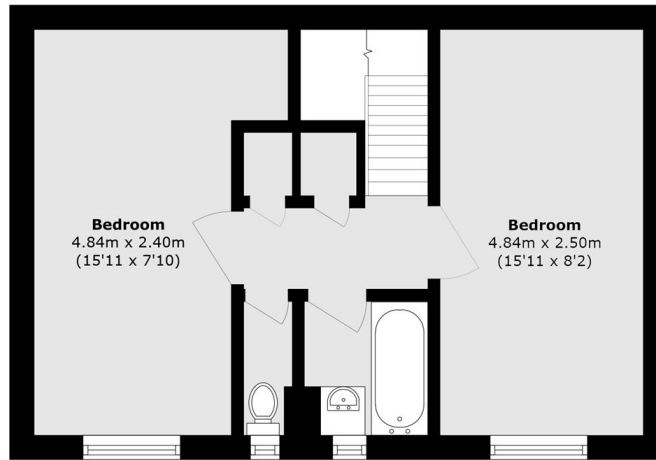
A split-level apartment with a west-facing reception and private garden. The entrance level consists of a large living area, with ample space to dine, as well as a spacious modern kitchen with fully integrated appliances. The first floor offers two double bedrooms and a modern bathroom with a separate WC. The apartment provides a wealth of natural light throughout.

This property is conveniently located between Bethnal Green (Central line) and Shoreditch High Street (Windrush line) stations. The general area provides a selection of cafés, bars and restaurants as well as the green spaces of Bethnal Green Gardens and Weavers Fields.

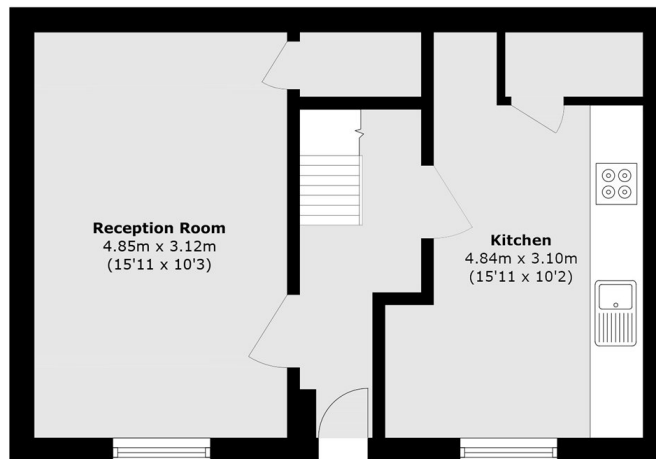
### Features

- Two Bedroom
- Split Level
- Private Patio
- West Facing
- Natural Sunlight
- Sought After Location

# Elver Gardens, London, E2



**First Floor**



**Ground Floor**

Total area (approx.): 75.0 sq. m (807.3 sq. ft)