



Wilfred Street
London, SW1E

CHESTERTONS





This charming spilt level, one-bedroom flat is situated within a handsome period Georgian building located in the Birdcage Walk Conservation Area, blending historic charm with modern living. Inside the flat, you'll find a thoughtfully designed open plan living space with a modern kitchen. On the lower ground floor a spacious bedroom with en-suite bathroom and built in storage.

Wilfred Street is located moments from some of London's most iconic landmarks including Buckingham Palace, The Houses of Parliament, green open plan spaces of St James's Park, a multitude of cafes, shops, restaurants, gyms as well as excellent transport links including Victoria and St James Park. Offered with no onward chain.

- Spacious spilt level 1 bedroom flat
- Beautifully presented throughout
- Prestigious Location: Situated in the Birdcage Walk Conservation Area.
- Prime Location: Close to landmarks, cafes, shops, restaurants, and excellent transport links (Victoria & St James Park).
- No onward Chain

Asking Price 675,000

Score	Energy rating	Current	Potential
92+	A		
81-91	B		81 B
69-80	C		
55-68	D	66 D	
39-54	E		
21-38	F		
1-20	G		

Tenure: Leasehold 189 years from 25 March 1976

Service Charge: £1,450 per annum

Ground Rent: £0

Local Authority: City of Westminster

Council Tax Band: C

Chestertons Westminster & Pimlico Sales

105 Wilton Road

London

SW1V 1DZ

westminster@chestertons.co.uk

020 3040 8201

chestertons.co.uk

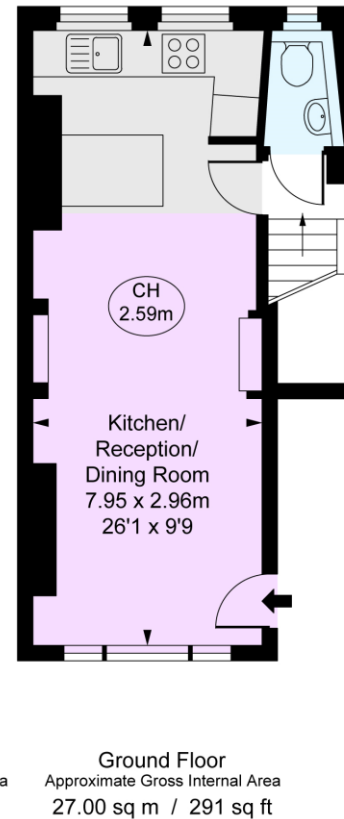
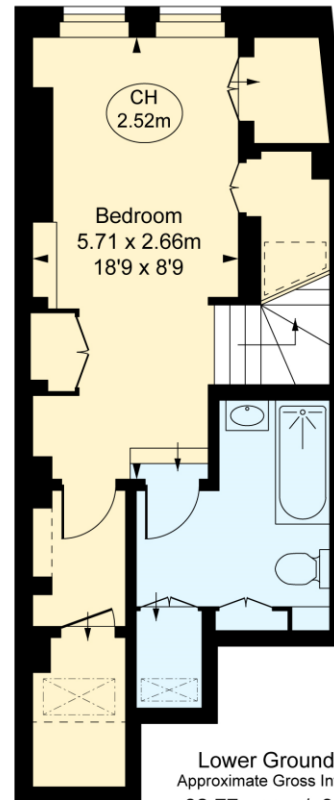
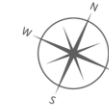
Wilfred Street, SW1E

Approximate Gross Internal Area

59.77 sq m / 643 sq ft

(Including restricted height
under 1.5m [-----])

(CH = Ceiling Heights)



FULHAM
PERFORMANCE
PRECISION YOU CAN TRUST

This plan is not to a given scale. A detailed layout plan with dimensions is available on request.
All quoted measurements and areas are within 1% tolerance and have been prepared in accordance with industry standards as defined in the RICS Code of Measuring Practice
© Fulham Performance

Chesterton UK Services Limited trading as Chestertons for themselves and for the vendor of this property whose agents they are, give notice that (i) these particulars do not constitute any part of an offer or contract, (ii) all statements contained within these particulars are made without responsibility on the part of Chestertons or the vendor, (iii) whilst made in good faith, none of the statements contained within these particulars are to be relied upon as a statement or representation of fact, (iv) any intending purchasers must satisfy themselves by inspection or otherwise as to the correctness of each of the statements contained within these particulars, (v) the vendor does not make or give either Chestertons or any person in their employment any authority to make or give representation or warranty whatsoever in relation to this property. Wide angle lenses may be used. ©Copyright Chestertons | Chesterton UK Services Limited | Registered Office 40 Connaught Street, Hyde Park, London W2 2AB Registered Company Number 05334580.



This paper is
100% recyclable