



West Hampstead Mews | London | NW6

Guide price £550,000



Situated in the charming West Hampstead Mews, this delightful apartment offers a perfect blend of comfort and style. Spanning an impressive 710 square feet, the property features a well appointed reception room that serves as an inviting space for relaxation and entertaining. The sleeping area is generously sized, providing a tranquil retreat, while the bathroom is modern and functional, catering to all your daily needs.

The property benefits from planning permission to create a fabulous 2 bedroom apartment and the proposed floorplan is available on Camden Council's website Ref: 2025/2539P

West Hampstead is renowned for its vibrant community and excellent transport links, making it an ideal location for both professionals and families alike. The area boasts a variety of local amenities, including shops, cafes, and restaurants, all within easy reach. The picturesque mews setting adds a unique charm, providing a peaceful escape from the hustle and bustle of city life.

- Manhattan studio apartment with planning permission to create a 2 bedroom apartment.
- Spacious reception room
- Close to local amenities
- Ideal for a home or investment/ development
- Easy access to transport
- Modern bathroom suite
- Located in West Hampstead
- 710 sq ft of living space
- Quiet mews location
- Viewing highly recommended

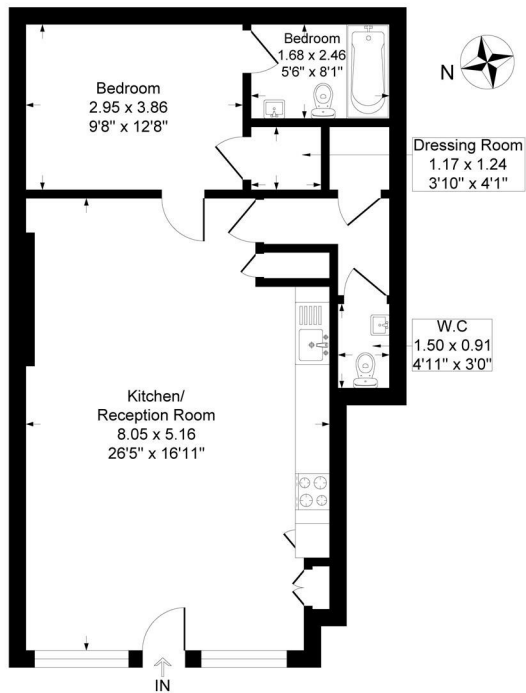
Local Authority: Camden
Council Tax Band: D
EPC: C
Tenure: Freehold





West Hampstead Mews, London NW6

Approximate Gross Internal Floor Area = 66.8 sq m / 720 sq ft

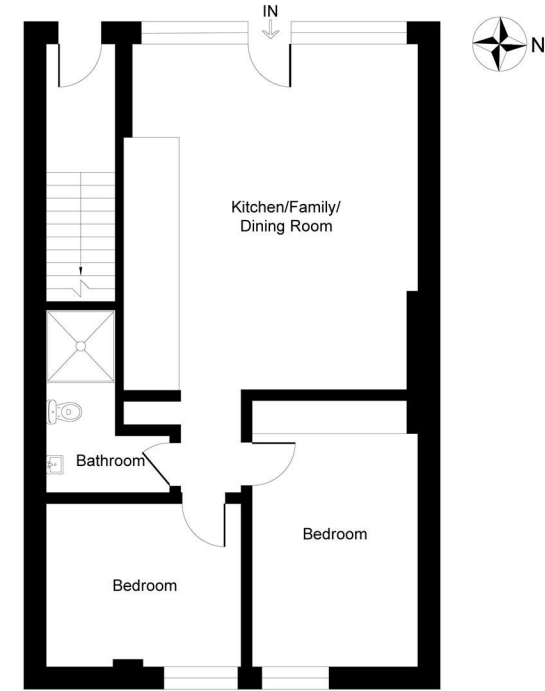


Ground Floor

Illustration for identification purposes only, measurements are approximate, not to scale.

Existing Floorplan

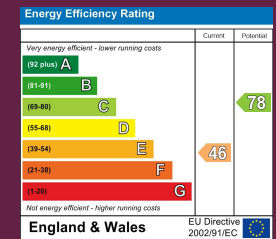
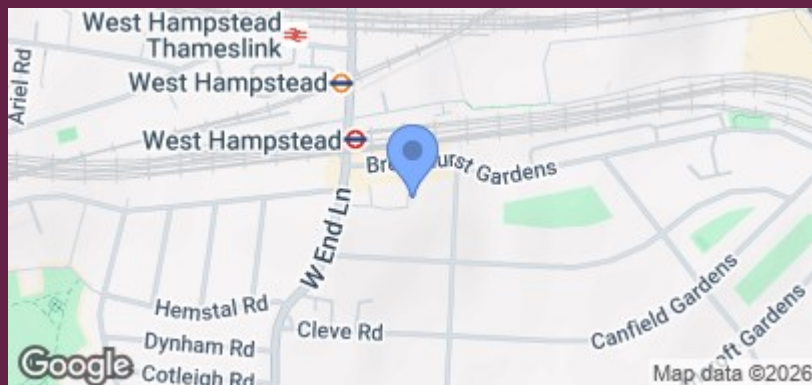
West Hampstead Mews, London NW6



Ground Floor

Illustration for identification purposes only, measurements are approximate, not to scale.

Proposed Floorplan



24 Bristol Gardens, London W9 2JQ
hello@draperlondon.com