



52 & 52a Gedling Road, Carlton,
Nottinghamshire, NG4 3FU

£295,000
Tel: 01949 836678

 **RICHARD
WATKINSON**
PARTNERS
Surveyors, Estate Agents, Valuers, Auctioneers

- Period Semi Detached Home
 - Considerable Potential
 - Established Corner Plot
 - Central Convenient Location
 - Excellent Refurbishment Project
- Currently Two Independent Flats
 - Requiring Modernisation
 - Generous Driveway & Double Garage
 - Walking Distance To Amenities
 - Viewing Highly Recommended

A really interesting opportunity to purchase a semi detached period home currently split into two flats with independent ground and first floor living. Each flat has its own separate entrance and services. The property is ripe to be converted back to an attractive single dwelling which, although likely to require a programme of modernisation, has retained much of its original character with and an attractive, period, bay fronted facade with arched entrance portico. The accommodation has high ceilings, deep skirtings and retains many of its original sash windows.

The accommodation currently comprises a ground floor flat lying in the region of 677 sq.ft., comprising an initial entrance hall with attractive period tiling leading through into a pleasant main sitting room with a dual aspect and walk in bay window overlooking the garden. In addition the room benefits from a high corniced ceiling, picture rail, deep skirtings, exposed floor boards and feature brick fire surround with alcoves to the side. A well proportioned kitchen overlooks the side garden and, although requiring a general programme of modernisation, provides a good sized space that links through into a ground floor bath/shower room. What would formerly have been the second reception is currently utilised as a double bedroom, again with a dual aspect and an attractive walk in bay window.

The first floor flat offers around 720 sq.ft. of accommodation with its own access and stairwell leading to a first floor landing and currently comprises an attractive, dual aspect, reception (formerly a double bedroom) with sash windows, chimney breast and deep skirtings. A first floor kitchen is large enough to accommodate a small dining or breakfast table and is fitted with a range of units and, although requiring modernisation, provides a blank canvas for those to place their own mark on a home. A double bedroom with aspects to both the front and side provides a good sized room and an additional second bedroom would make an ideal dressing room or first floor office. In addition there is a first floor bathroom with four piece suite.

As well as the internal accommodation the property occupies a convenient central local literally yards from local amenities, located on a corner plot with gardens to three sides, having pedestrian access off Gedling Road and vehicular access onto a driveway at the rear with ample off road parking for numerous vehicles, detached double garage and established gardens.

Overall this is a really interesting proposition, whether as a investment with two independent flats or, alternatively to be converted back to one single dwelling, making it a potential family home with a great deal of character.

CARLTON
Carlton is a small town that sits towards the east of Nottingham with a rich history in the textile industry, before becoming a mostly residential area as it is now. It is located within close reach of Nottingham city centre, Nottingham Racecourse and Nottingham Trent University and benefits from its own train station, with frequent services to Newark Castle, Matlock, Lincoln and Leicester.

AN OPEN FRONTED PORCH LEADS TO A GLAZED ENTRANCE DOOR AND, IN TURN, INTO:

MAIN ENTRANCE HALL
23'5" max x 5'11" max (2'8" min) (7.14m max x 1.80m max (0.81m min))
Having an attractive period tiled floor, high corniced ceiling, central heating radiator and further stripped pine doors leading to:

BEDROOM
12'9" x 12'8" (15'6" max into bay) (3.89m x 3.86m (4.72m max into bay))
A well proportioned double bedroom having attractive walk in bay window to the front, double glazed window to the side, deep skirtings, high corniced ceiling, picture rail and exposed floor boards.

SITTING ROOM
13'5" x 12'10" (15'8" max into bay) (4.09m x 3.91m (4.78m max into bay))
A pleasant well proportioned reception benefitting from a dual aspect including an attractive walk in bay window to the front and further sash window to the side. The focal point to the room is a chimney breast with feature exposed brick fire surround, timber mantel and quarry tiled hearth, having alcoves to the side, high corniced ceiling, picture rail, deep skirtings and attractive exposed floor boards.

KITCHEN
12'5" x 11'11" (3.78m x 3.63m)
A well proportioned space fitted with a range of wall, base and drawer units, having two runs of laminate preparation surfaces, one with inset stainless steel sink and drain unit, plumbing for washing machine, space for free standing gas or electric cooker, attractive period built in dresser unit providing a good level of storage, quarry tiled floor, sash window overlooking the garden and a further door leading to:

BATH/SHOWER ROOM
11'10" max x 5'11" (3.61m max x 1.80m)
Having an initial shower area with tiled enclosure and wall mounted electric shower and further door leading through into the bathroom area, having panelled bath, pedestal washbasin, WC and double glazed windows to the rear.

RETURNING TO THE OPEN FRONTED PORCH A FURTHER GLAZED ENTRANCE DOOR LEADS THROUGH INTO:

INITIAL HALLWAY
7'4" x 2'11" (2.24m x 0.89m)
Having attractive period tiled floor and staircase rising to:

FIRST FLOOR LANDING
Having a spindle balustrade, high ceiling, picture rail, deep skirtings and, in turn, further doors leading to:

SITTING ROOM
13'5" x 12'6" (4.09m x 3.81m)
A pleasant first floor reception having a dual aspect with sash windows to two elevations, chimney breast with quarry tiled hearth, gas fire and alcoves to the side, deep skirtings, high ceilings and picture rail.

KITCHEN
12'7" x 10'3" (3.84m x 3.12m)
A well proportioned space large enough to accommodate a small dining or breakfast table, having an aspect to the rear and fitted with a range of wall, base and drawer units with a U shaped configuration of laminate preparation surfaces, one with inset stainless steel sink and drain unit, plumbing for washing machine, space for free standing gas or electric cooker, wall mounted gas central heating boiler and double glazed window to the rear.

BEDROOM 1
12'7" x 12'7" (3.84m x 3.84m)
A double bedroom have a dual aspect with sash window to the front and side, built in wardrobe, chimney breast and deep skirtings.

BEDROOM 2/STUDY
9'11" x 5'11" (3.02m x 1.80m)
The room would be large enough to accommodate a single bed but would make a good dressing room or first floor office, having access to loft space above, deep skirtings and sash window to the front.

BATHROOM
8'6" x 7'10" (2.59m x 2.39m)
Having a suite comprising panelled bath, WC, pedestal washbasin and corner shower enclosure with wall mounted electric shower and sash window overlooking the garden.

EXTERIOR
The property occupies an established corner plot fronting Gedling Road with vehicular access off Black Hill Drive. The plot offers a southerly facing aspect to the side, having a wall frontage with courtesy gate and steps leading up to the main entrance. The gardens are mainly laid to lawn with established trees and shrubs. Vehicular access onto a driveway at the rear provides off road car standing for numerous vehicles and, in turn, leads to a detached double garage with twin up and over doors and a pathway leading a secondary access at the rear.

COUNCIL TAX BAND
GEDLING BOROUGH COUNCIL

Flat 52 Gedling Road - Band A
Flat 52a Gedling Road - Band A

TENURE
Freehold

ADDITIONAL NOTES
The property is understood to have mains electricity, drainage, water and gas. (information taken from Energy performance certificate and/or vendor).
The property is being sold as a whole, but has been split into two flats (ground & first floor), one of the units is still tenanted on a short hold tenancy (notice will need to be given), as are the garages to the rear. It therefore offers potential to purchase the dwelling as an investment property with potential tenant.
The internal images are for the first floor flat only.

ADDITIONAL INFORMATION
Please see the links below to check for additional information regarding environmental criteria (i.e. flood assessment), school Ofsted ratings, planning applications and services such as broadband and phone signal. Note Richard Watkinson & Partners has no affiliation to any of the below agencies and cannot be responsible for any incorrect information provided by the individual sources.

Flood assessment of an area: <https://check-long-term-flood-risk.service.gov.uk/risk#>

Broadband & Mobile coverage:- <https://checker.ofcom.org.uk/en-gb/broadband-coverage>

Radon Gas:- <https://www.ukradon.org/information/ukmaps>

School Ofsted reports:- <https://reports.ofsted.gov.uk/>

Planning applications:- <https://www.gov.uk/search-register-planning-decisions>











Property type	Top-floor flat
Total floor area	67 square metres

Rules on letting this property

Properties can be let if they have an energy rating from A to E.

You can read [guidance for landlords on the regulations and exemptions \(https://www.gov.uk/guidance/domestic-private-rented-property-minimum-energy-efficiency-standard-landlord-guidance\)](https://www.gov.uk/guidance/domestic-private-rented-property-minimum-energy-efficiency-standard-landlord-guidance).

Energy rating and score

This property's energy rating is D. It has the potential to be C.

[See how to improve this property's energy efficiency.](#)

The graph shows this property's current and potential energy rating.

Properties get a rating from A (best) to G (worst) and a score. The better the rating and score, the lower your energy bills are likely to be.

For properties in England and Wales:

the average energy rating is D
the average energy score is 60

Score	Energy rating	Current	Potential
92+	A		
81-91	B		
69-80	C		78 C
55-68	D	56 D	
39-54	E		

Property type	Ground-floor flat
Total floor area	63 square metres

Rules on letting this property

Properties can be let if they have an energy rating from A to E.

You can read [guidance for landlords on the regulations and exemptions \(https://www.gov.uk/guidance/domestic-private-rented-property-minimum-energy-efficiency-standard-landlord-guidance\)](https://www.gov.uk/guidance/domestic-private-rented-property-minimum-energy-efficiency-standard-landlord-guidance).

Energy rating and score

This property's energy rating is D. It has the potential to be C.

[See how to improve this property's energy efficiency.](#)

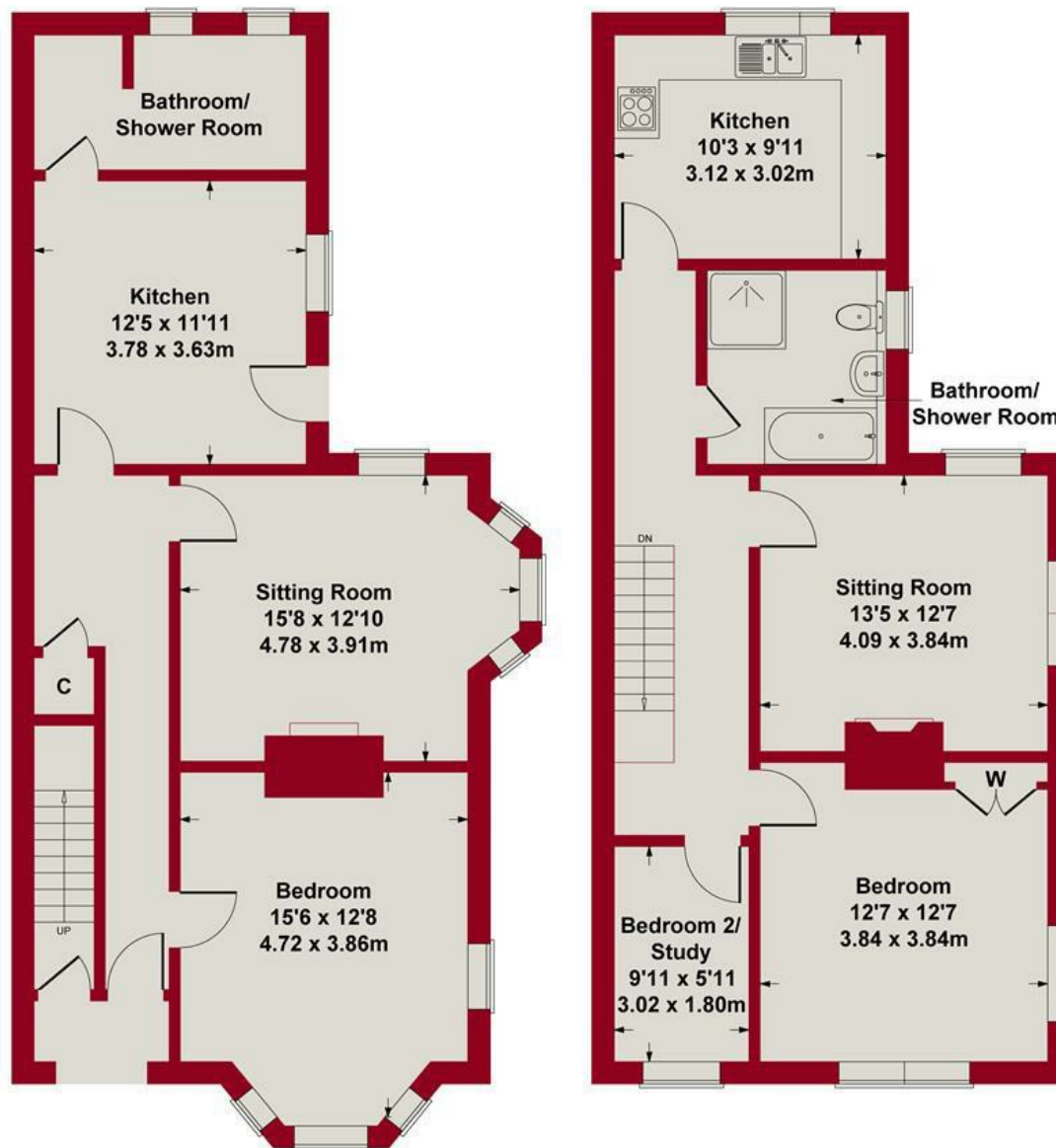
The graph shows this property's current and potential energy rating.

Properties get a rating from A (best) to G (worst) and a score. The better the rating and score, the lower your energy bills are likely to be.

For properties in England and Wales:

the average energy rating is D
the average energy score is 60

Score	Energy rating	Current	Potential
92+	A		
81-91	B		
69-80	C		75 C
55-68	D	64 D	
39-54	E		
21-38	F		



GROUND FLOOR

FIRST FLOOR

SKETCH PLAN FOR ILLUSTRATIVE PURPOSES ONLY

All measurements walls, doors, windows, fittings and appliances, their sizes and locations, are approximate only. They cannot be regarded as being a representation by the seller, nor their agent.

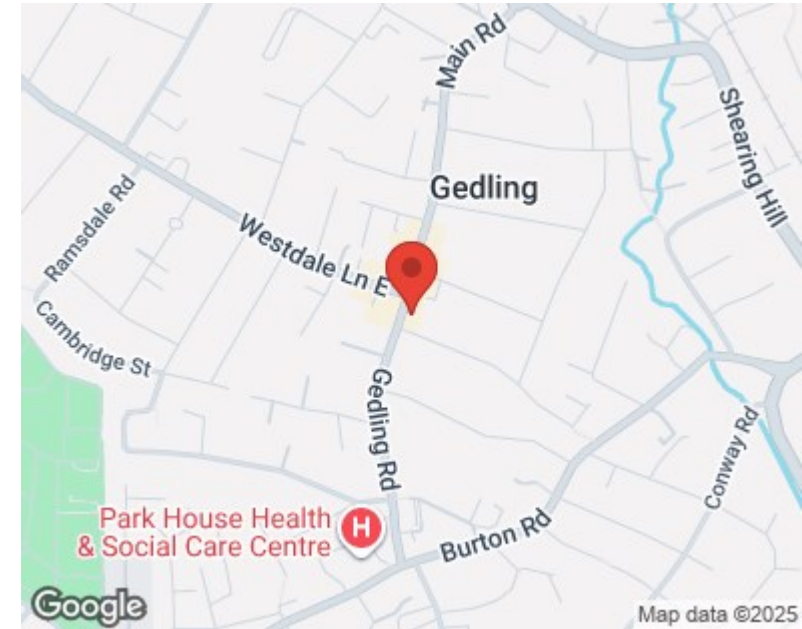
Produced by Potterplans Ltd. 2025





Energy Efficiency Rating		
	Current	Potential
Very energy efficient - lower running costs		
(92 plus) A		
(81-91) B		
(69-80) C		
(55-68) D		
(39-54) E		
(21-38) F		
(1-20) G		
Not energy efficient - higher running costs		
	64	75
England & Wales		EU Directive 2002/91/EC

Environmental Impact (CO ₂) Rating		
	Current	Potential
Very environmentally friendly - lower CO ₂ emissions		
(92 plus) A		
(81-91) B		
(69-80) C		
(55-68) D		
(39-54) E		
(21-38) F		
(1-20) G		
Not environmentally friendly - higher CO ₂ emissions		
England & Wales		EU Directive 2002/91/EC



These particulars, whilst believed to be accurate are set out as a general outline only for guidance and do not constitute any part of an offer or contract. Intending purchasers should not rely on them as statements of representation of fact, but must satisfy themselves by inspection or otherwise as to their accuracy. No person in this firm's employment has the authority to make or give any representation or warranty in respect of the property. Any fixtures and fittings not mentioned in these details are excluded from the sale price. No services or appliances which may have been included in these details have been tested by the selling agent and therefore cannot be guaranteed to be in good working order.

As part of the service we offer we may recommend ancillary services to you such as mortgage advice, solicitors and surveyors which we believe will help with your property transaction. We wish to make you aware that should you decide to proceed we may receive a referral fee or equivalent. This could be a fee, commission, payment or other reward. We will not refer your details unless you have provided consent for us to do so. You are not under any obligation to provide us with your consent or to use any of these services. You are also free to choose an alternative provider.

Thinking of selling? For a FREE no obligation quotation call 01949 836678



RICS



Richard Watkinson & Partners is the trading name of Richard Watkinson Ltd.
Registered in England. Ltd Registration number: 07140024

10 Market Street,
Bingham NG13 8AB
Tel: 01949 836678
Email: bingham@richardwatkinson.co.uk



**RICHARD
WATKINSON
PARTNERS**

Surveyors, Estate Agents, Valuers, Auctioneers