



Guide Price
£260,000

Freehold

2x  1x  2x 

**Malling Road, Snodland,
Kent, ME6**

OVER 60?

Secure this property
for up to **59% less!**

Wards
Helping you move forwards



Main features

- Extremely deceptive spacious home in the heart of Snodland village
- Relax in the cosy lounge with the fire on after a long day at work
- Catch up with friends in the well laid out kitchen next to the dining room
- Within walking distance to amenities
- Upstairs independent bathroom, plus a handy downstairs cloakroom

Accommodation

GROUND FLOOR

Entrance Porch

Lounge : 12'10 x 11'0 (3.91m x 3.36m)

Dining Room: 12'9 x 10'11 (3.89m x 3.33m)

Kitchen: 7'11 x 7'5 (2.41m x 2.26m)

Cloakroom

FIRST FLOOR

Landing

Bedroom 1: 12'10 x 11'0 (3.91m x 3.36m)

Bedroom 2: 11'0 x 9'8 (3.36m x 2.95m)

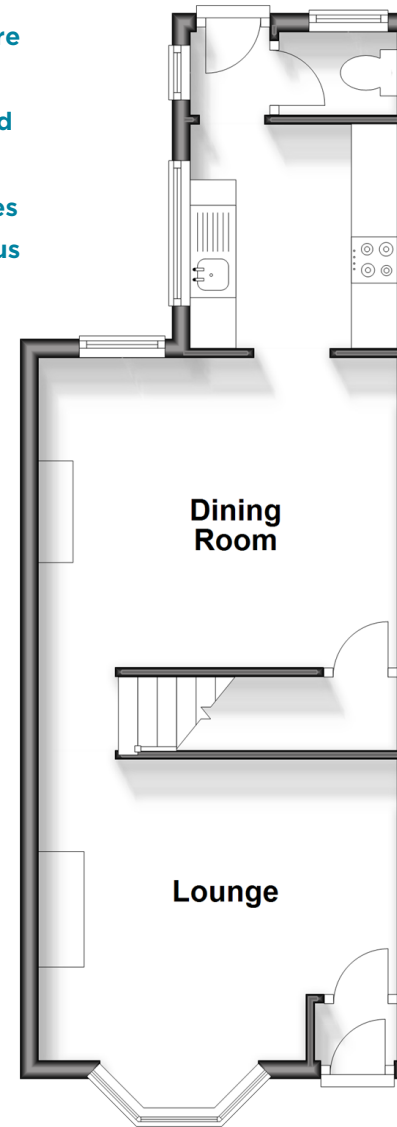
Bathroom

OUTSIDE

Rear Garden

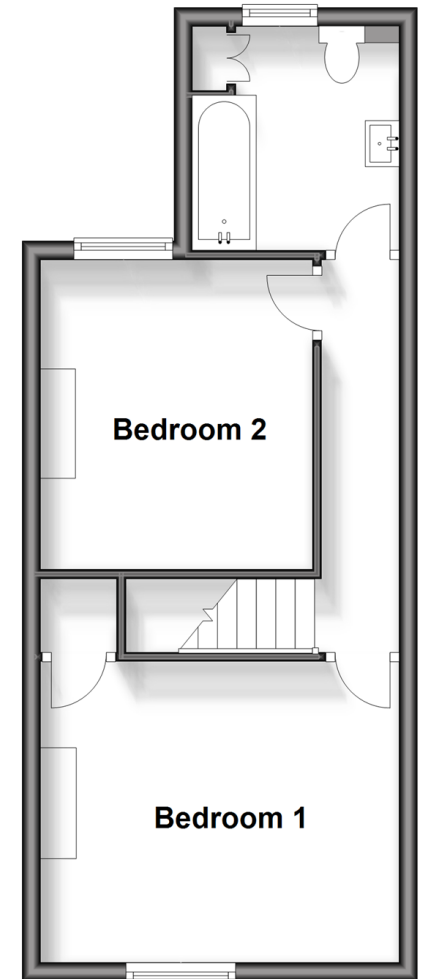
Ground Floor

Approx. 38.0 sq. metres (409.2 sq. feet)



First Floor

Approx. 35.9 sq. metres (386.7 sq. feet)



Call Snodland - 01634 245055 ■ wardsof Kent.co.uk

- Legal advice should be taken to verify fixtures/fittings, planning, alterations and/or lease details
- Appliances & services are untested, dimensions are approximate and floor plans are not to scale
- Through a Homewise Home For Life Plan people aged 60+ can secure this property for up to 50% less, by purchasing a Lifetime Lease.



13821656/20250922/CG/LK