



**Guide Price**  
**£350,000**

**Freehold**

3x  2x  1x 

**Lasius Drive, Coxheath,  
Maidstone, Kent, ME17**

**OVER 60?**

Secure this property  
for up to **59% less!**

*Wards*  
Helping you move forwards





## Main features

- Beautifully presented throughout
- Popular village location, short walk to local shops & Coxheath Primary School
- Private, sunny garden with side access
- 2 allocated parking spaces
- NO FORWARD CHAIN

## Accommodation

### GROUND FLOOR

Entrance Hall  
Downstairs Cloakroom: 7'0 x 2'1 (2.14m x 0.64m)  
Kitchen: 12'0 x 8'0 (3.66m x 2.44m)  
Lounge/Diner: 15'1 x 15'1 (4.60m x 4.60m)

### FIRST FLOOR

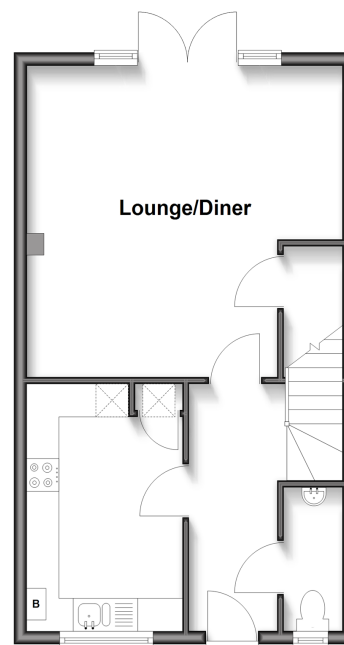
Landing  
Bedroom 1: 11'0 x 10'1 (3.36m x 3.08m)  
En Suite Shower Room: 8'0 x 5'0 (2.44m x 1.53m)  
Bedroom 2: 9'1 x 8'1 (2.77m x 2.47m)  
Bedroom 3: 9'0 x 6'1 (2.75m x 1.86m)  
Bathroom: 6'1 x 5'1 (1.86m x 1.55m)

### OUTSIDE

Front and Rear Gardens  
Allocated Parking

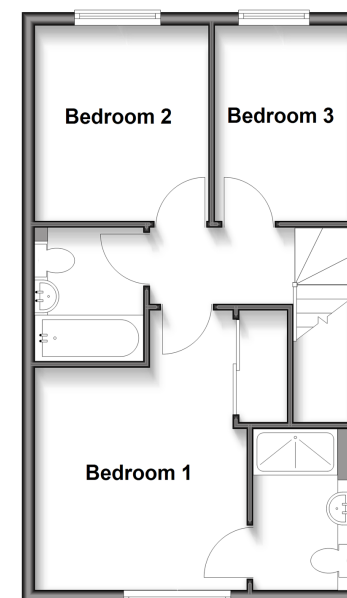
### Ground Floor

Approx. 42.1 sq. metres (452.9 sq. feet)



### First Floor

Approx. 42.1 sq. metres (452.9 sq. feet)



**Call Loose - 01622 744067 ■ wardsofkent.co.uk**

■ Legal advice should be taken to verify fixtures/fittings, planning, alterations and/or lease details  
■ Through a Homewise Home For Life Plan people aged 60+ can secure this property for up to 59% less, by purchasing a Lifetime Lease.

■ Appliances & services are untested, dimensions are approximate and floor plans are not to scale



13022240/20250630/AT/AT