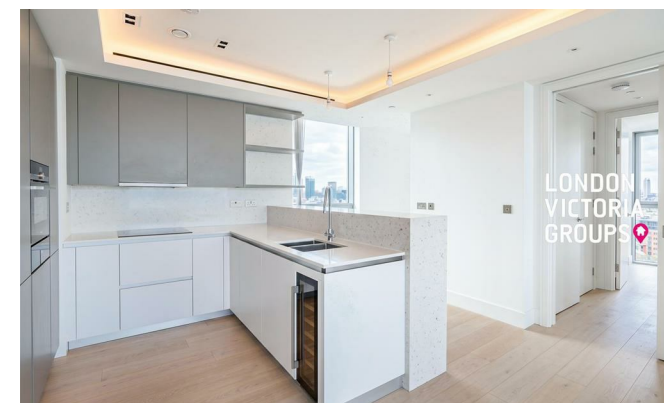


**LONDON
VICTORIA
GROUPS** 



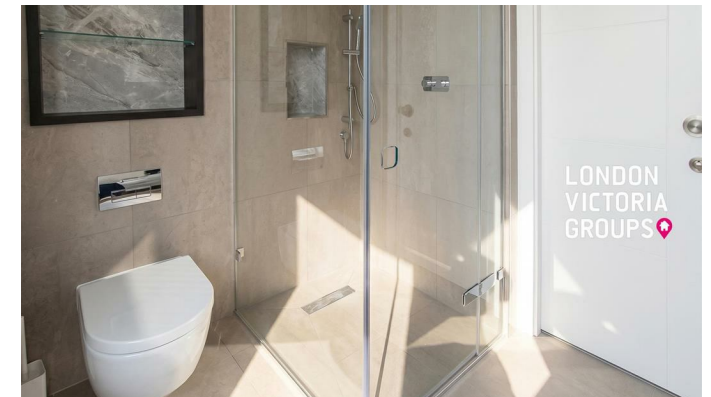
Carrara tower, 1 Bollinder Place

, London EC1V 2AF

- 2 Bedrooms 2 Bathrooms
- Floor-to-ceiling windows with panoramic city views
 - Gym and yoga studio
- Walking distance to Old Street and Angel Station
 - CTB-G
- Bright open-plan living/dining area
- Comfort cooling & underfloor heating
 - Indoor swimming pool
 - EPC-B

£5,000 Per Month

Local Authority **Islington**
Council Tax Band **G**
EPC Rating **B**



London Office Office

Spaces Victoria, 25 Wilton Road, Pimlico,
London, SW1V 1LW

Contact

020 3084 3094
XL@londonvictoriagroups.co.uk
www.londonvictoriagroups.co.uk

Agents Note: Whilst every care has been taken to prepare these particulars, they are for guidance purposes only. All measurements are approximate and for general guidance purposes only and whilst every care has been taken to ensure accuracy, they should not be relied upon and potential buyers/tenants are advised to recheck the measurements.