

local  
properties

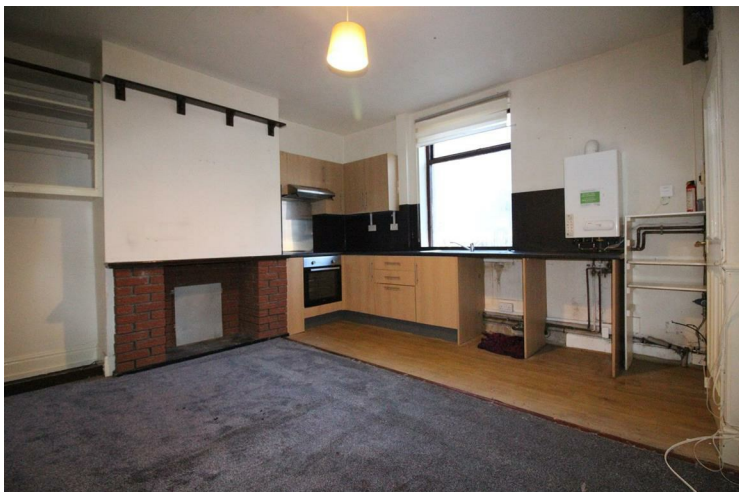
buy • sell • let



## 10 Airedale Terrace Leeds, LS27 8AS

£695 PCM

\*\*\*\*\* TWO BEDROOM BACK TO BACK TERRACE - AVAILABLE NOW \*\*\*\*\* The property has gas central heating and comprises: entrance vestibule, open plan lounge with kitchen area, cellar, landing, two bedrooms, shower room. There is a small garden to the front and on street parking. Close to Morley Town Centre and all local amenities, it is conveniently placed for access to Leeds City Centre and the motorways. This would make an ideal home for a couple and viewing is recommended. Deposit - £800. Council Tax Band - A



- Two Bedroom Back To Back • Deposit - £800 • Energy Rating - D • GCH & PVCu DG • Lounge With Kitchen Area

#### ENTRANCE VESTIBULE

Stairs to first floor. Door to front.

#### LOUNGE WITH KITCHEN AREA

Fireplace surround. Plate rack, ceiling rose and dado rail. Access to cellar. Fitted base and wall units incorporating stainless steel sink unit with mixer tap. Electric oven and hob. Plumbing for automatic washing machine. Window to front. Radiator.

#### CELLAR

Providing extra storage space.

#### LANDING

Access to loft. Radiator.

#### BEDROOM ONE

With fitted wardrobe to recess. Window to front. Radiator.

#### BEDROOM TWO

Window to front. Radiator.

#### SHOWER ROOM

Large Walkin Shower, pedestal wash hand basin, low flush wc. Extractor fan. Radiator.

#### EXTERIOR

Enclosed garden to the front of the property with on street parking.

#### DIRECTIONS

From Morley Town Centre proceed up Queensway and turn left at the roundabout into Corporation Street. Go straight on at the next roundabout and turn left at the second into Fountain Street. Go straight on at both sets of lights and turn right into

Airedale Terrace where number 10 will be found on the left hand side, signified by our To Let board

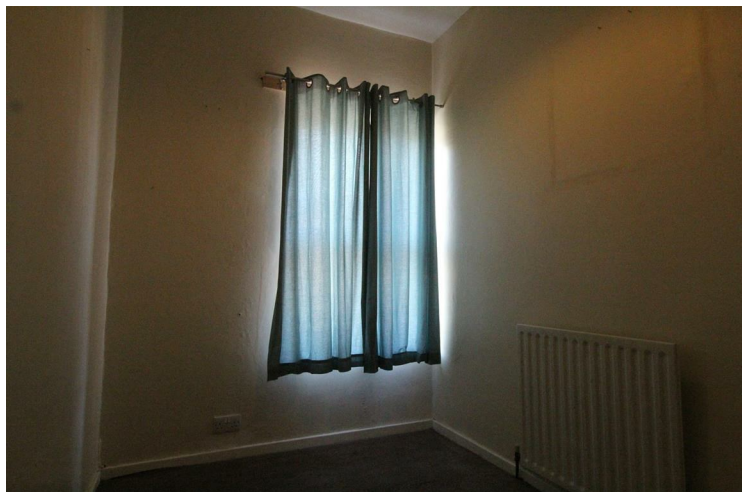
#### NOTES

Children - yes

Pets - No

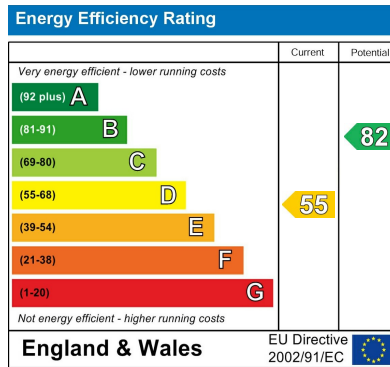
Smokers - outside only

The property is available now.



- On Street Parking
- Fitted Wardrobes to Bedroom One
- Garden To Front
- Close to Morley Town Centre
- Available Now





Agents Note: Whilst every care has been taken to prepare these particulars, they are for guidance purposes only. All measurements are approximate and are for general guidance purposes only and whilst every care has been taken to ensure their accuracy, they should not be relied upon and potential buyers/tenants are advised to recheck the measurements

Birstall Lettings  
 Midland Bank Chambers  
 Smithies Lane  
 Birstall  
 Batley  
 West Yorkshire  
 WF17 9EB

01924 474456  
 info@localproperties.net  
<http://www.localproperties.net/>

