



MILE



Rookery Way, London £2,100 pcm %tenure%

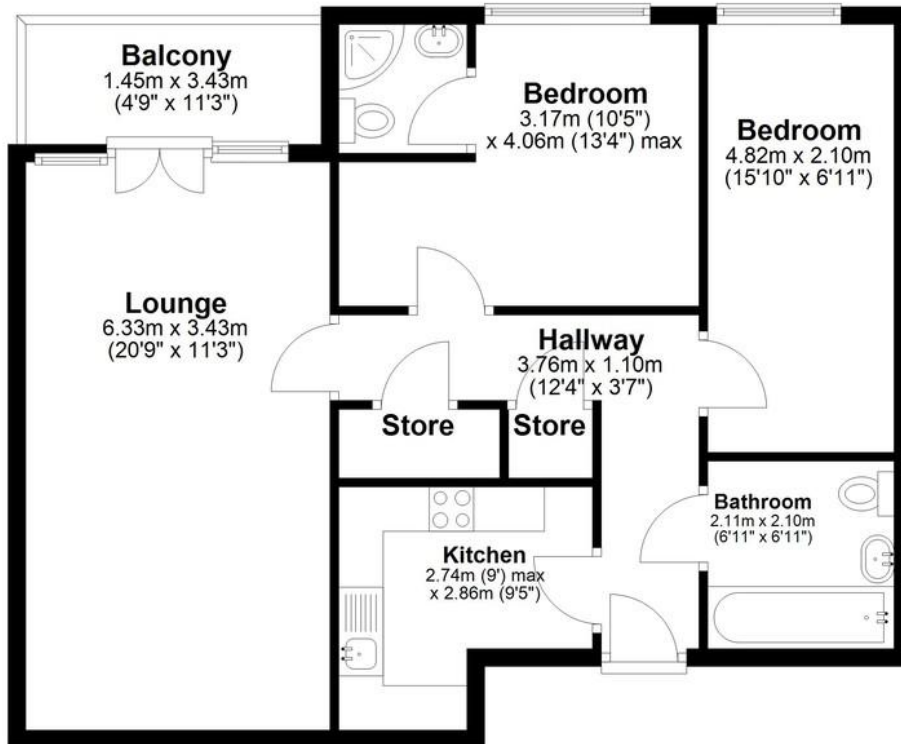
Mile... are delighted to offer this beautifully presented two double bedroom, two bathroom apartment set within the sought-after Geneva Court development in the heart of Colindale. This modern property offers bright and spacious accommodation throughout, featuring a generous reception room, a fully fitted contemporary kitchen, and direct access to a private balcony.

The apartment benefits from two well-proportioned double bedrooms, including a master bedroom with an en-suite shower room, alongside a stylish family bathroom finished to a high standard. Further features include ample storage, wood flooring, lift access, and secure entry system.

- Two Double Bedrooms
- Two Bathrooms
- Spacious Reception Room
- Private Balcony
- Lift Access
- Excellent Transport Links
- Close to Local Amenities
- Secure Entry System
- Available early June
- Epc Rating B

Second Floor

Approx. 72.7 sq. metres (782.4 sq. feet)



Total area: approx. 72.7 sq. metres (782.4 sq. feet)

This floor plan has been created by a third party and should be used as a general outline for guidance only. Any areas, measurements or distances quoted are approximate and any intending purchaser or lessee should satisfy themselves by inspection, searches, enquiries and/or full survey as to the correctness of each statement. We accept no responsibility or liability for any loss whatsoever that may arise as a result of this plan and the information contained within.

© @modephotouk | www.modephoto.co.uk
Plan produced using PlanUp. □

Geneva Court

MONEY LAUNDERING REGULATIONS 2003: Intending purchasers will be asked to produce identification documentation at a later stage and we would ask for your co-operation in order that there will be no delay in agreeing the sale.

General: While we endeavour to make our sales particulars fair, accurate and reliable, they are only a general guide to the property and, accordingly, if there is any point which is of particular importance to you, please contact the office and we will be pleased to check the position for you, especially if you are contemplating travelling some distance to view the property.

Measurements: These approximate room sizes are only intended as general guidance. You must verify the dimensions carefully before ordering carpets or any built-in furniture.

Services: Please note we have not tested the services or any of the equipment or appliances in this property, accordingly we strongly advise prospective buyers to commission their own survey or service reports before finalising their offer to purchase.