



BREENS

Navestock Close

Chingford · E4

£290,000

LEASEHOLD



# BREENS

THE HOME

## Navestock Close

*Chingford · E4*

KEY FEATURES

- 1 Bedroom Flat
- Allocated Parking Space
- Cul De Sac Location
- Close to local amenities
- Freehold

---

EPC RATING

**D**

COUNCIL TAX BAND

**C**

---

**1**

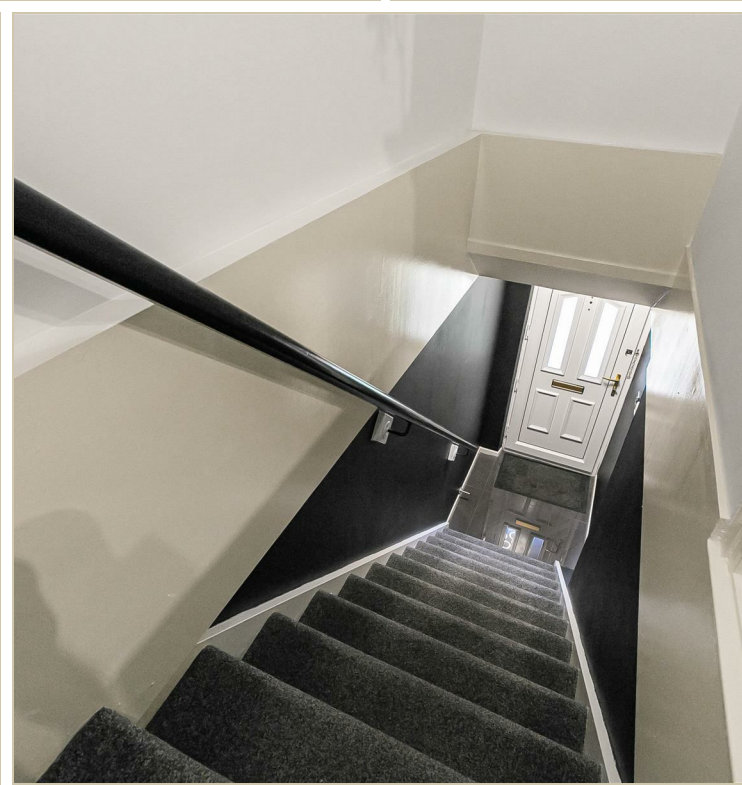
BEDROOMS

**1**

BATHROOMS

**1**

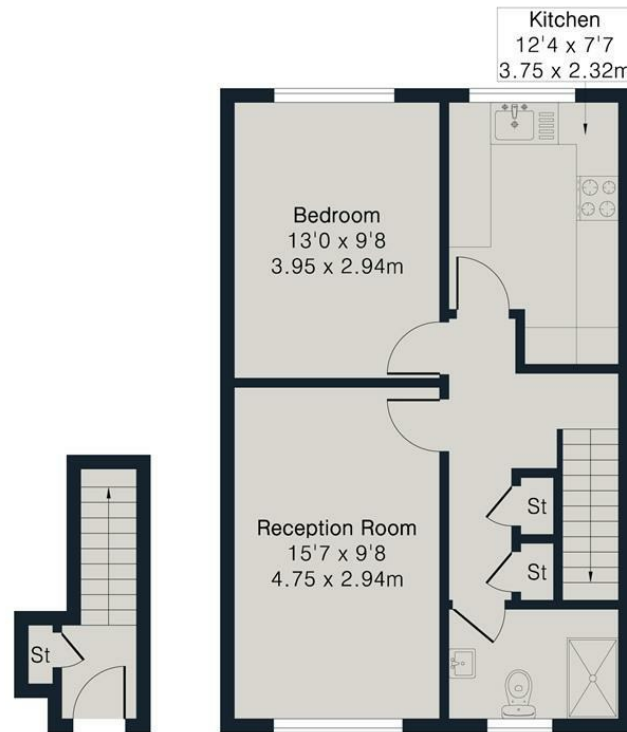
RECEPTIONS



**Approximate Gross Internal Area 562 sq ft - 53 sq m**

Ground Floor Area 39 sq ft - 4 sq m

First Floor Area 523 sq ft - 49 sq m



Ground Floor First Floor



Floor plan produced in accordance with RICS Property Measurement 2nd Edition. Although Pink Plan Ltd ensures the highest level of accuracy, measurements of doors, windows and rooms are approximate and no responsibility is taken for error, omission or misstatement. These plans are for representation purposes only and no guarantee is given on the total square footage of the property within this plan. The figure icon is for initial guidance only and should not be relied on as a basis of valuation.

**BREENS**

**BREENS**

GET IN TOUCH

**02085315454**

highampark@breens.property

www.breens.property

VISIT US

**2 Broadway Parade, Winchester Road, Highams Park, E4 9LG**

These particulars are intended as a general guide and are believed to be correct, but their accuracy is not guaranteed and they do not form part of any offer or contract. All measurements are approximate and for guidance only. The Agent has not tested any apparatus, equipment, fixtures, fittings or services and cannot verify they are in working order or fit for purpose. Photographs are for illustration only and may depict items that are not for sale or included in the sale price. References to tenure are based on information supplied by the vendor; the Agent has not seen the title documents, and buyers should obtain verification from their solicitor or surveyor. Under the Money Laundering Regulations 2017, intending purchasers will be asked to produce identification and documentation at a later stage. These particulars are issued on the condition that all negotiations are conducted through Breens Estate Agents. Subject to contract and availability.