

## Cowper Street, Knighton Fields

£130,000

This MODERN style first floor flat is available with NO CHAIN and benefits from ALLOCATED PARKING. The property enjoys a stunning open plan living kitchen dining room enjoying a southerly direction.

Council Tax band: B

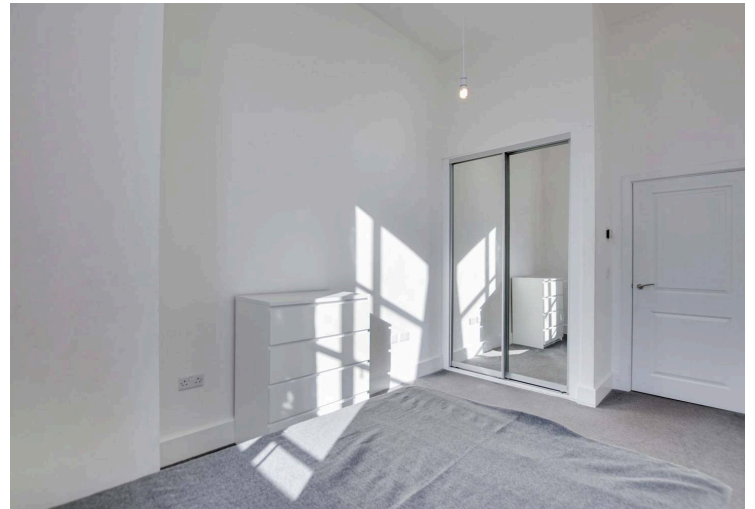
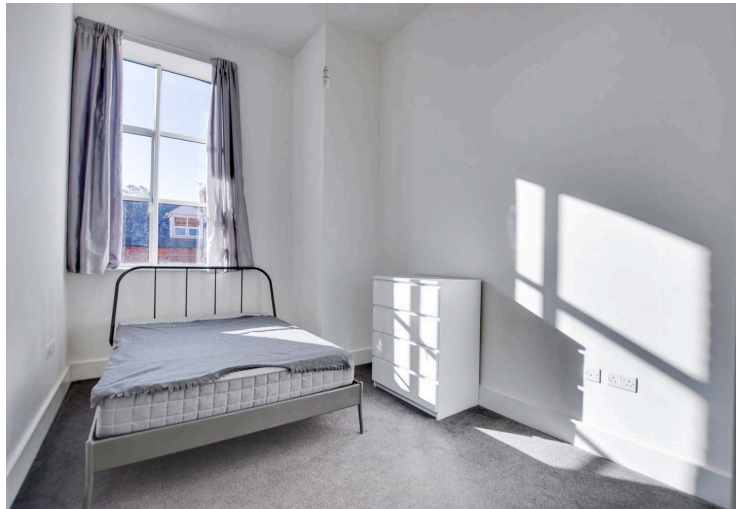
Tenure: Leasehold

EPC Energy Efficiency Rating: B



0116 274 5544





### **Communal Entrance**

With stairs to first floor.

### **Entrance Hall**

With storage cupboard, radiator.

### **Open Plan Living Kitchen Dining Room**

24' 2" x 15' 7" (7.36m x 4.74m)

Measurement narrowing to 3.48 m. With two double glazed windows to the front elevation, exposed brick wall, high ceiling, living area with recess small study area, fitted kitchen area with built-in oven and electric hob, stainless steel chimney hood over, stainless steel sink and drainer unit, a range of wall units with under unit lighting, base units with work surface over, part carpeted and part tiled floor, space for fridge freezer, two radiators.

### **Bedroom**

15' 1" x 8' 11" (4.59m x 2.73m)

With double glazed window to the front elevation, built-in sliding mirrored wardrobe, radiator.





### **Bathroom**

8' 7" x 6' 11" (2.61m x 2.10m)

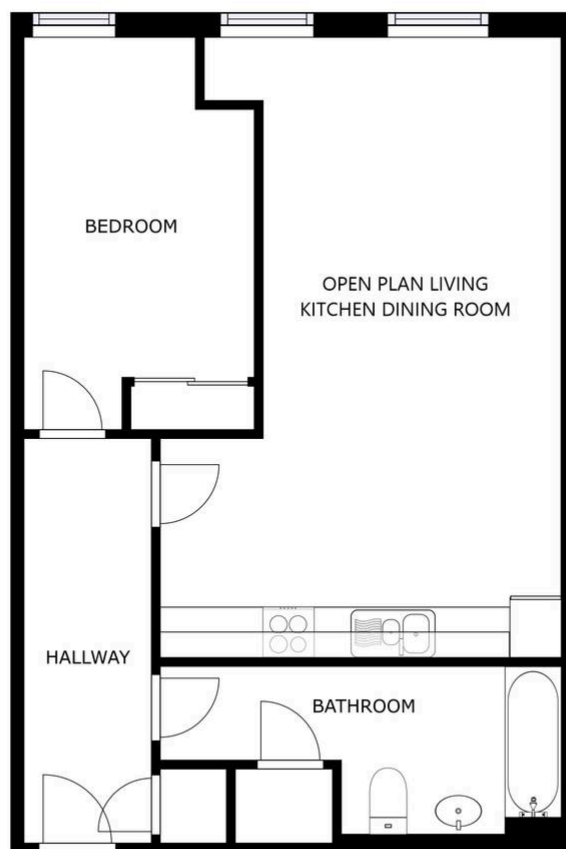
With inset ceiling spotlights, bath with mixer tap shower attachment, wash hand basin, low-level WC, part tiled walls, tiled floor, heated chrome towel rail, shaver point, cupboard housing plumbing for washing machine, extractor fan.

### **Communal Garden**

Communal decked area.

### **Parking**

Situated within the basement labelled '104'.



SIZES AND DIMENSIONS ARE APPROXIMATE, ACTUAL MAY VARY.



**We'll keep you moving...**



We must inform all prospective purchasers that the measurements are taken by an electronic tape and are provided as a guide only and they should not be used as accurate measurements. We have not tested any mains services, gas or electric appliances, or fixtures and fittings mentioned in these details, therefore, prospective purchasers should satisfy themselves before committing to purchase. Intending purchasers must satisfy themselves by inspection or otherwise to the correctness of the statements contained in these particulars. Knightsbridge Estate Agents & valuers (nor any person in their employment) has any authority to make any representation or warranty in relation to the property. The floor plans are not to scale, and are intended for use as a guide to the layout of the property only. They should not be used for any other purpose. Similarly, the plans are not designed to represent the actual décor found at the property in respect of flooring, wall coverings or fixtures and fittings.