

5 Limley Grove, Chorlton, Manchester, M21 8UB



JP&Brimelow
ESTATE AGENTS



 3  2  3  D

VIDEO TOUR AVAILABLE A stylishly presented and spacious, THREE DOUBLE BEDROOM Victorian property. This bay fronted Mid-terrace is spread over FOUR FLOORS including a useful converted basement and top floor office. Situated on a highly popular residential cul-de-sac off Sandy Lane in Chorlton.

Within walking distance of Chorlton Park and Beech Road, which offers a selection of restaurants, independent shops, and bars. Chorlton centre is also close by, providing a wide range of local amenities, along with the Metrolink station on St Werburgh's Road, offering direct links into the city centre and MediaCity.

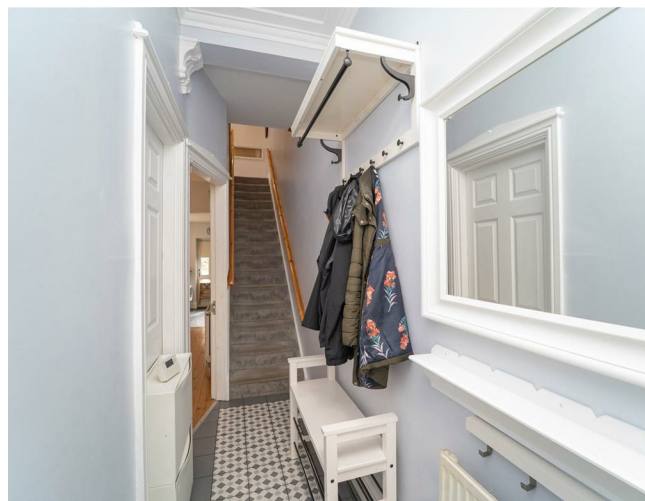
The well-considered accommodation is introduced by an entrance hallway, leading through to a generous open-plan lounge and dining area with a bay window to the front aspect, which flows seamlessly into a fitted kitchen with access to a private, enclosed rear courtyard garden.

A staircase leads down to the converted basement level, which provides a versatile family room together with a contemporary three-piece shower room.

To the first floor, the landing gives access to three well-proportioned double bedrooms, along with a modern three-piece family bathroom. The second floor comprises a dedicated office space, further enhanced by useful eaves storage.


The property benefits from many period features throughout including high ceilings, ceiling coving, sash windows and is warmed by gas fired central heating. Will suit a professional couple or a growing family and internal inspection is highly recommended to appreciate this lovely home.

£495,000





EPC Chart

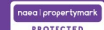
Energy Efficiency Rating		Current	Potential
Very energy efficient - lower running costs			
(92 plus) A			
(81-91) B			
(69-80) C			80
(55-68) D		65	
(39-54) E			
(21-38) F			
(1-20) G			
Not energy efficient - higher running costs			
England & Wales		EU Directive 2002/91/EC 	



Tenure: Freehold Council Tax Band: B



JP & Brimelow Estate Agents Ltd
 430 Barlow Moor Road, Manchester, M21 8AD
 Tel: 0161 8822233
 E: sales@jpbrimelow.co.uk www.jpandbrimelow.co.uk



JP & Brimelow
 ESTATE AGENTS

NOTICE: JP & Brimelow Estate Agents Ltd for themselves and for the vendors or lessors of this property whose agents they are give notice that:

- (i) the particulars are set out as a general outline only for the guidance of intending purchasers or lessees, and do not constitute, nor constitute part of, an offer or contract;
- (ii) all descriptions, dimensions, references to the condition and necessary permissions for use and occupation, and other details are given in good faith and are believed to be correct but any intending purchasers or tenants should not rely on them as statements or representations of fact but must satisfy themselves by inspection or otherwise as to the correctness of each of them;
- (iii) no person in the employment of JP & Brimelow Estate Agents Ltd has any authority to make or give any representation or warranty whatever in relation to this property.

jpandbrimelowstateagents

@jpandbrimelow

