



Main Street, Sutton on Derwent, York, YO41 4BT

Guide Price £775,000

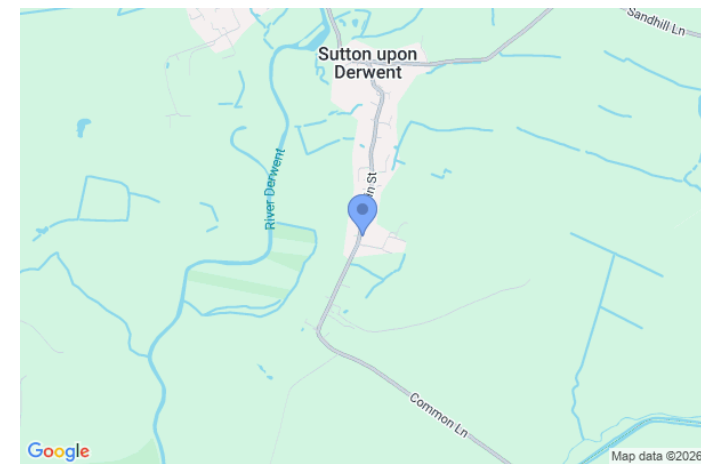
This stunning five bedroom detached family home is located in the highly desirable village of Sutton on Derwent, only a short drive from the City of York and market town of Pocklington. If you have a growing family or just desire more space, then this could be the property you have been waiting for, as it boasts underfloor heating to the ground floor, solar water heating, an open plan kitchen/diner, utility, multiple reception rooms, large double bedrooms, a detached double garage, a good sized garden and secure gated parking. A viewing is highly recommended to fully appreciate everything that it has to offer.

On entering you will see that a lovely solid oak floor has been laid throughout the hall and the majority of the ground floor. A door on the right opens to the open plan kitchen/diner which has space at one end for a formal dining table with chairs. There is a central island with storage below and a quartz worktop which also doubles up as a breakfast bar. An L shaped quartz worktop to the side incorporates a recessed stainless steel sink with drainer and a recessed five ring induction hob. There are various appliances including two single ovens, a warming draw, a combination microwave oven, fridge/freezer and a dishwasher. In addition, there are various wall and base storage units. A separate utility room is located at the rear of the kitchen which has been fitted with a quartz worktop that incorporates a recessed sink, space for a washing machine and dryer, storage and a door which opens to the rear garden.

The living room is next and is extremely spacious. There are dual aspect windows, which include a full wall of bi folding doors that open to give access to the rear garden. There is an impressive log burner at the centre of the room, a great feature especially in the colder winter months. A snug can be found at the front of the house which could be used as a home office or games room, if so desired. Before entering the cloakroom which has w/c and has basin, you will see an area which has been fitted with useful full height storage so could be used as a boot room. Storage below the stairs which can be accessed from two sides completes the ground floor.

Moving up to the first floor it is hard to not be impressed by the master bedroom as it not only has a walk in wardrobe with fitted storage but an en-suite comprising double shower, low level w/c, hand basin with storage below and a chrome heated towel rail. There are 4 further double bedrooms, two of which have built in wardrobes. A family bathroom with a bath, shower, low level w/c, hand basin and chrome heated towel completes the internal accommodation.

The front of the property has a large gravelled parking area which is secured by electric gates. A drive down the side of the house leads to a detached double garage. The rear has mainly been laid to lawn with borders of mature shrubs and trees. A path has been laid around the edge and leads to a timber garden shed with a patio adjacent. A brick wall encloses the garden making it extremely private and secure.





AN INDIVIDUALLY DESIGNED FAMILY HOME IN THE HEART OF SUTTON ON DERWENT



R M English Ltd, 13 Walmgate, York, YO1 9TX Tel: 01904 697900



Energy Efficiency Rating		Current	Potential
Very energy efficient - lower running costs			
(92-100)	A		
(81-91)	B		
(69-80)	C		
(55-68)	D		
(39-54)	E		
(21-38)	F		
(1-20)	G		
Not energy efficient - higher running costs			
		81	86

England, Scotland & Wales EU Directive 2002/91/EC

Environmental Impact (CO ₂) Ra		0	0
		Current	Potential
Very environmentally friendly - lower CO ₂ emissions			
(92-100)	A		
(81-91)	B		
(69-80)	C		
(55-68)	D		
(39-54)	E		
(21-38)	F		
(1-20)	G		
Not environmentally friendly - higher CO ₂ emissions			

England, Scotland & Wales EU Directive 2002/91/EC

Viewing strictly by appointment

Tenure Freehold

Council Tax Band G

Local Authority East Riding of Yorkshire Council

Services Mains water, gas, electric & drainage. Solar hot water



Address: Park House, Main Street, Sutton on Derwent, York, YO41 4BT
Reference: 1053



rmenglish.co.uk

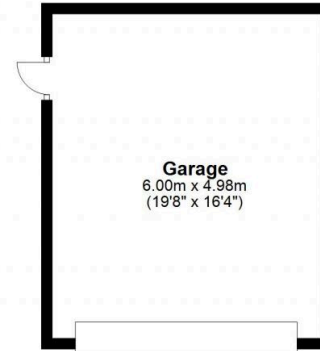
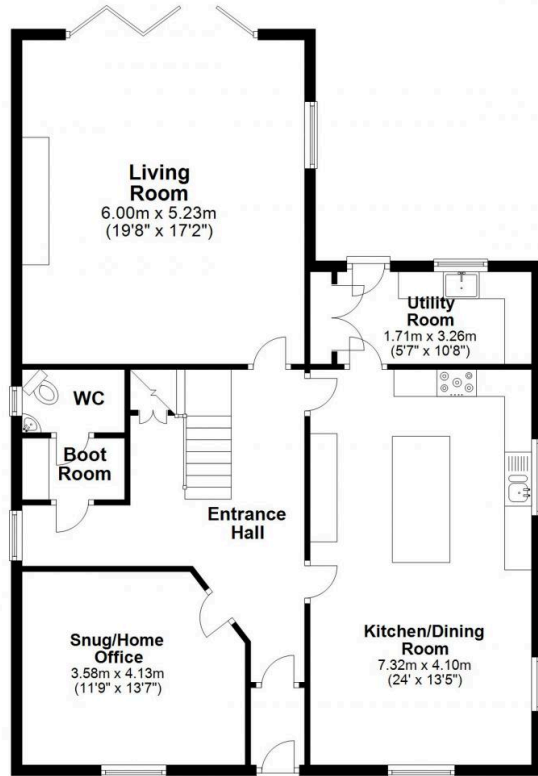


Offices in York, Pocklington and Market Weighton

R M English Ltd, 13 Walmgate, York, YO1 9TX Tel: 01904 697900

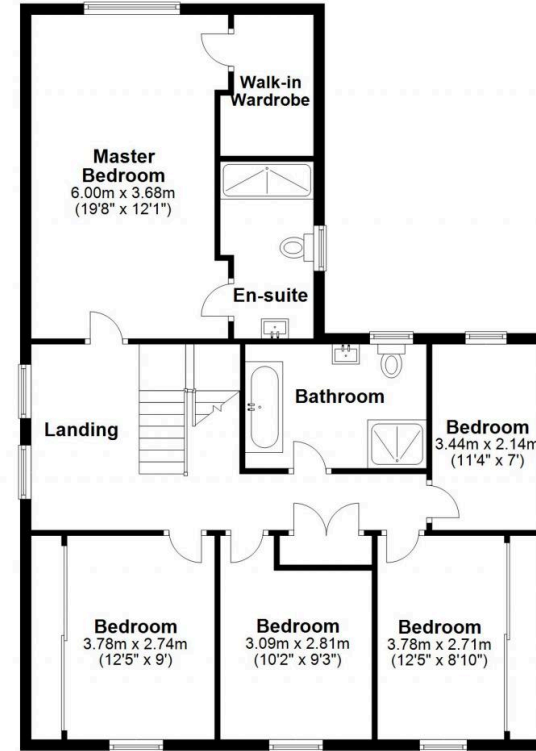
Ground Floor

Approx. 138.4 sq. metres (1489.8 sq. feet)



First Floor

Approx. 101.0 sq. metres (1087.0 sq. feet)



Total area: approx. 239.4 sq. metres (2576.7 sq. feet)

For Informative Purposes Only - Not To Scale
Plan produced using PlanUp.

Disclaimer

R M English, their clients and any joint agents give notice that: 1: They are not authorised to make or give any representations or warranties in relation to the property either here or elsewhere, either on their own behalf or on behalf of their client or otherwise. They assume no responsibility for any statement that may be made in these particulars. These particulars do not form part of any offer or contract and must not be relied upon as statements or representations of fact. 2: Any areas, measurements or distances are approximate. The text, photographs and plans are for guidance only and are not necessarily comprehensive. It should not be assumed that the property has all necessary planning, building regulations or other consents and R M English have not tested any services, equipment or facilities. Purchasers must satisfy themselves by inspection or otherwise.