



Colonnade Gardens, W3 £550,000

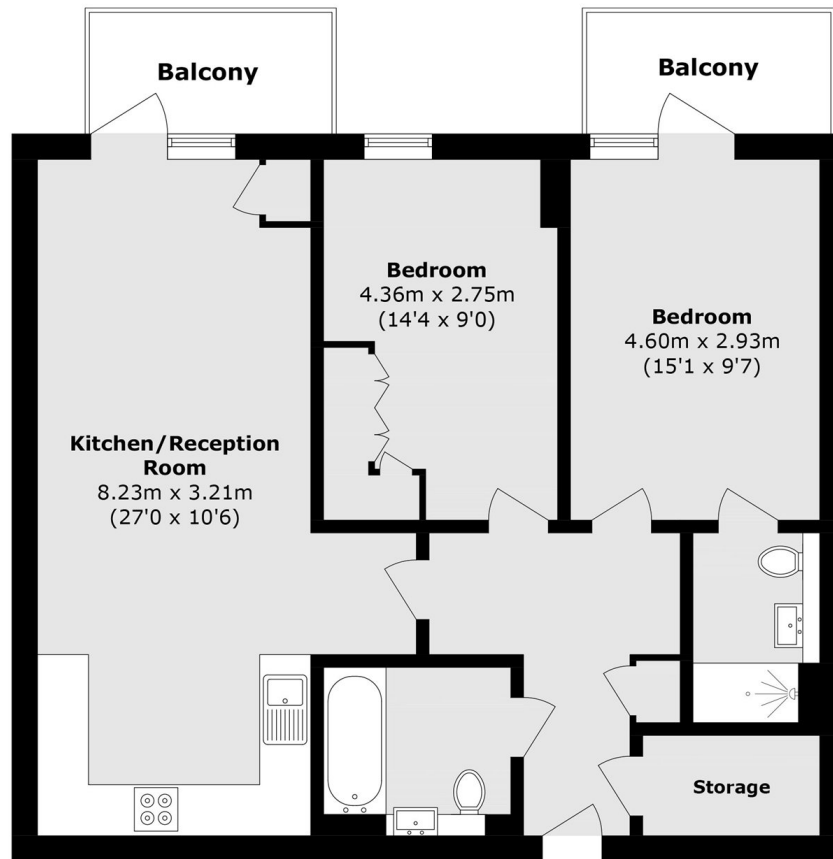
Bringing to market an elegant two bedroom two bathroom apartment on the penultimate floor with a south orientation. This home boasts close to 800 sq.ft of internal modern living with two separate balconies, a large open plan kitchen living space with all integrated appliances. This property further benefits from shared garden spaces for residence of Knightwood Court making it ideal for those opting for green space within a gated community.

Located within walking distance to Wendall Park and just over one mile to Turnham Green station (Piccadilly and District line). Uniquely positioned nearby a parade of independent cafe's and supermarkets with further convenience into Westfields shopping centre.

Features

- Two Double Bedrooms
- Two Bathrooms
- Two Balconies
- Low Service Charge Cost
- Askew Village Borders
- South Facing

Colonnade Gardens, London, W3



Total area (approx.): 74.0 sq. m (796.5 sq. ft)
Balcony total (approx.): 8.1 sq. m (87.1 sq. ft)