



## CHILTERN COURT, NW1

£1,085,000

Two double bedrooms

Porter

High ceilings

Modern throughout

Lift

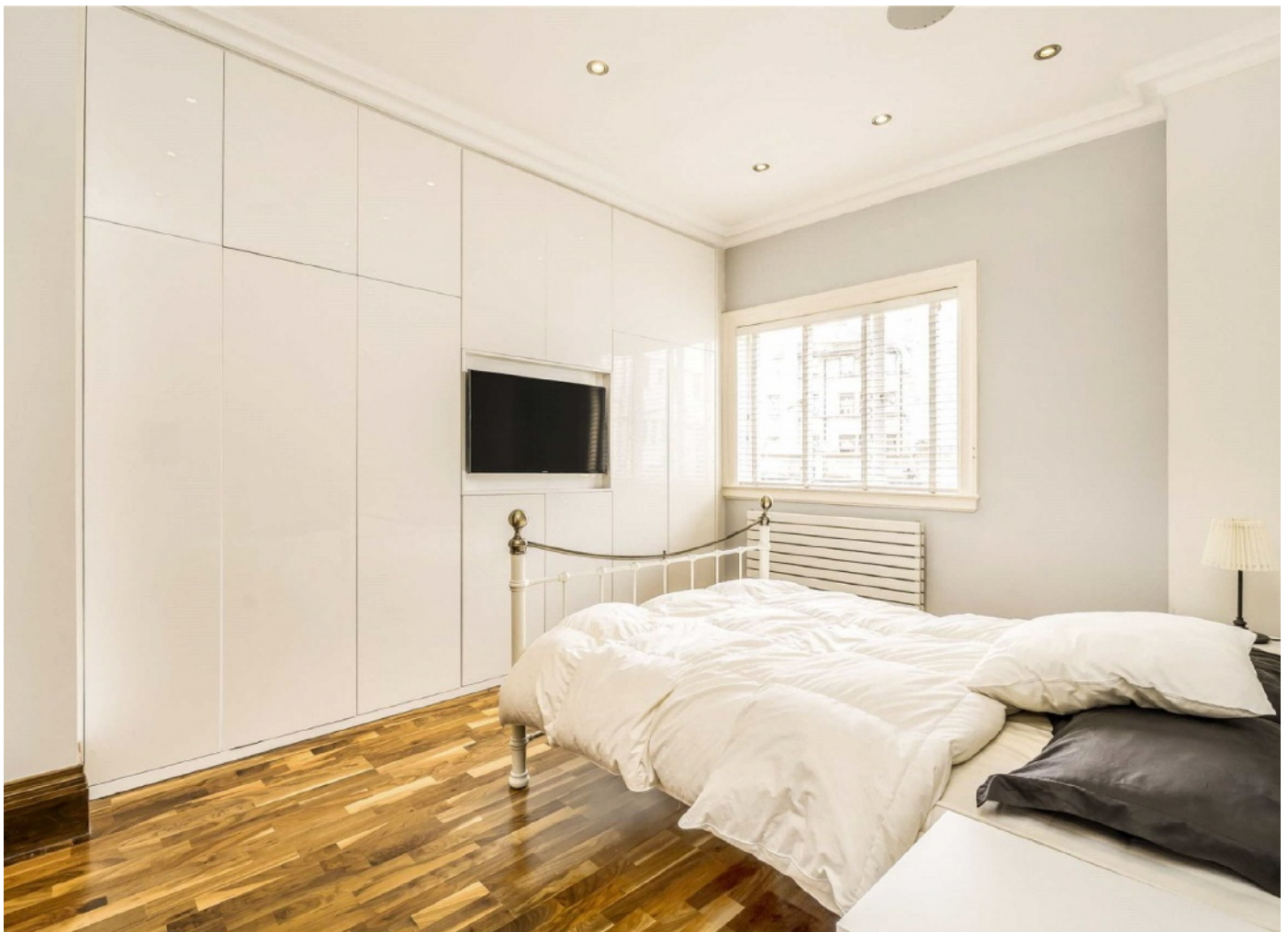
Prime location



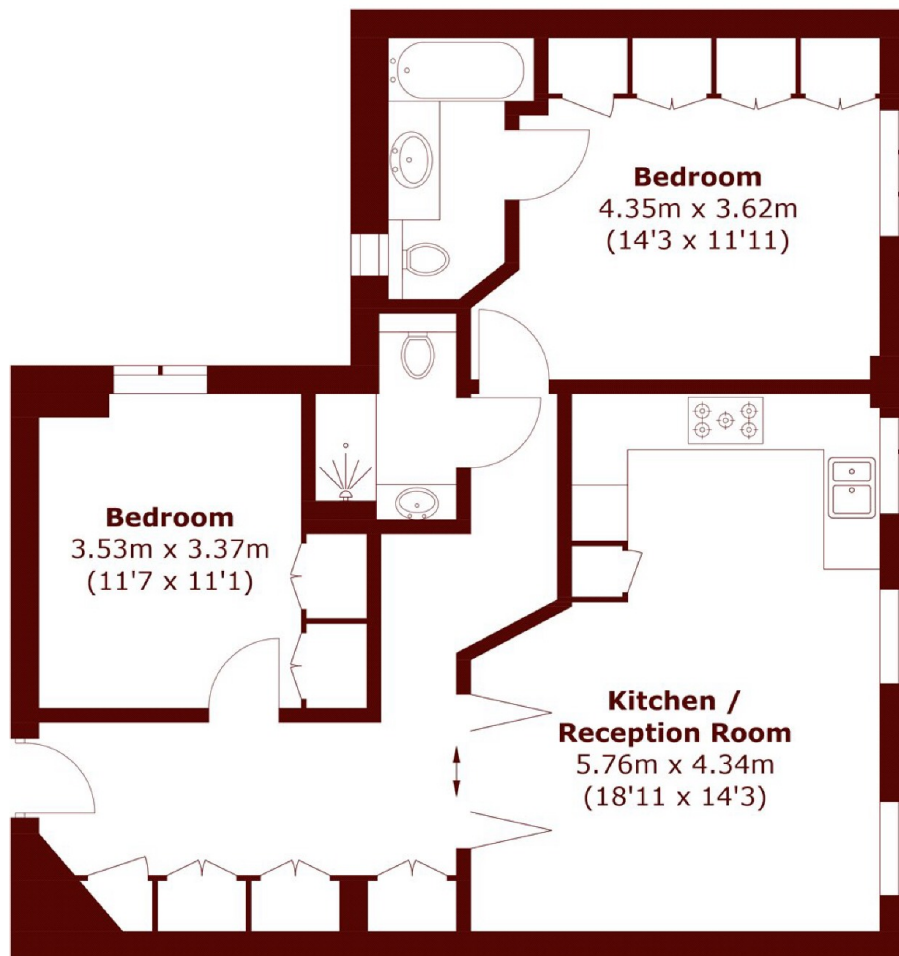
# ABOUT THE PROPERTY

This beautifully presented two-bedroom apartment has some of the highest ceilings you'll find in Marylebone. The rooms are well proportioned with large windows and wood flooring throughout. The property has ample of storage throughout and benefits from a lift and porter.

Chiltern Court is in extremely well managed purpose-built block located close to Baker Street Underground that benefits from 24 hour portering and is located minutes from the green expanse of Regents Park.



# STEP INSIDE CHILTERN COURT



## First Floor

Total area (approx.): 71.9 sq. m (773.9 sq. ft)

Marylebone & Mayfair  
020 7935 1775

Energy Rating: D We aim to make our particulars both accurate and reliable. However, they are not guaranteed; nor do they form part of an offer or contract. If you require clarification on any points then please contact us, especially if you're traveling some distance to view. Please note that appliances and heating systems have not been tested and therefore no warranties can be given as to their good working order

MARSH &  
PARSONS