



## Kingsworthy Close, KT1

£320,000

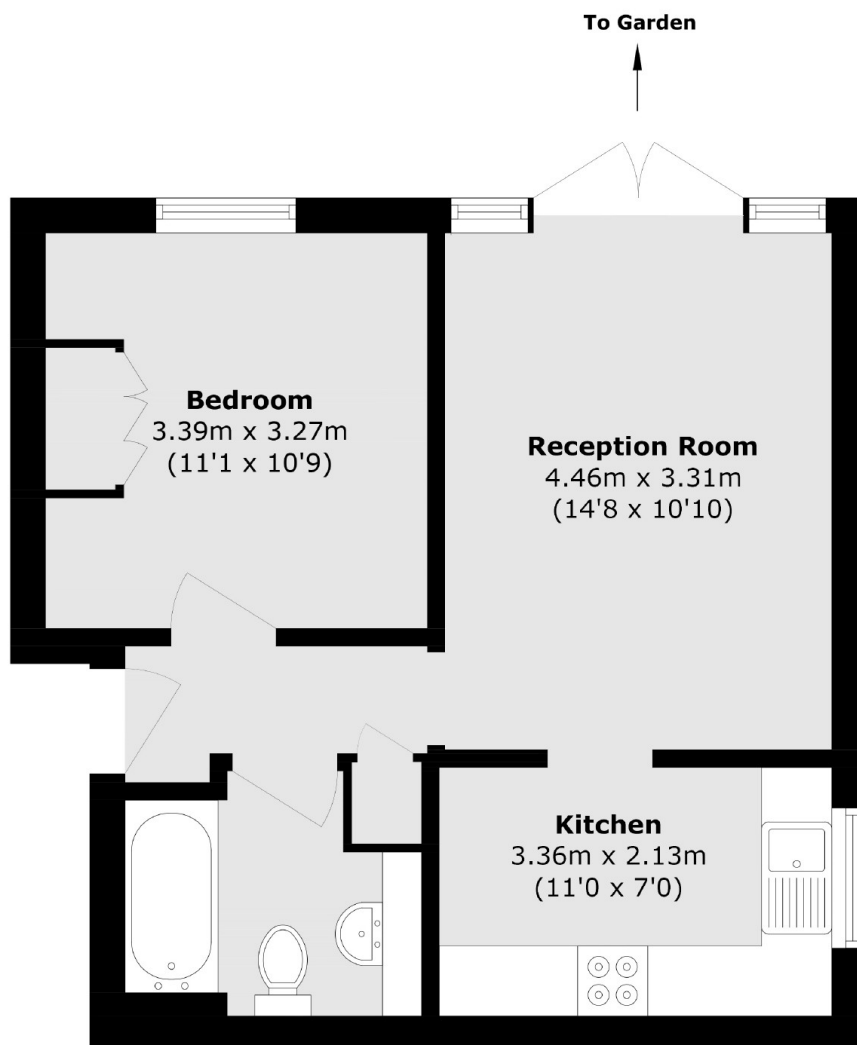
A spacious and modern one bedroom, ground floor apartment, tucked away in the corner of this sought after gated development. Bright and well proportioned, the apartment enjoys direct access to a tranquil, walled section of the communal garden, offering a sense of privacy. This property will be offered with a new lease upon completion.

Kingsworthy Close is a modern, gated development located just 150 yards to Fairfield Park and Athelstan Recreational Ground. This location is favourably positioned for the highly regarded St Johns Primary School. Both Kingston Station and Kingston town centre are just under a mile away, providing extensive shopping and leisure amenities.

### Features

- Chain Free
- Ground Floor
- Direct Garden Access
- Gated Development
- Residents Parking
- One Double Bedroom

# Kingsworthy Close, Kingston Upon Thames, KT1



Total area (approx.): 42.9 sq. m (461.7 sq. ft)