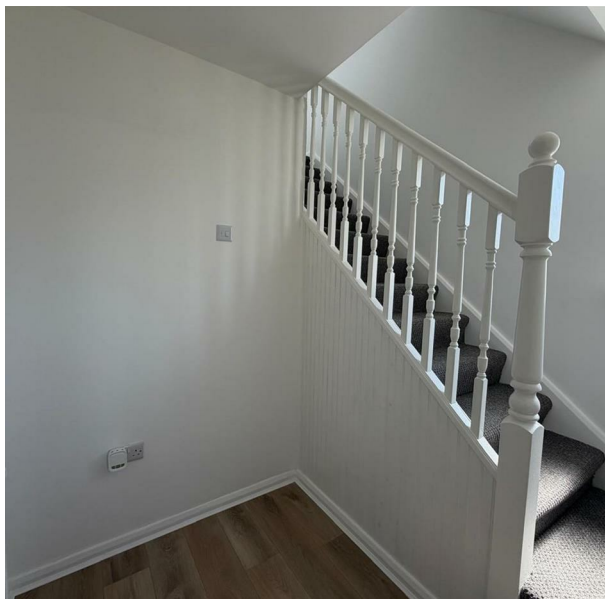


20 Leaton Avenue, Manchester, M23 1HL
£1,400 Per Month
Council Tax Band: New Build



Nestled on the charming Leaton Avenue in Manchester, this delightful end terrace house offers a perfect blend of comfort and convenience. The property boasts a well-thought-out layout that is ideal for families or those seeking extra space.

Upon entering, you are greeted by two inviting reception rooms, providing ample space for relaxation and entertaining guests. These versatile areas can be tailored to suit your lifestyle, whether you envision a cosy living room or a vibrant dining space. The natural light that floods through the windows creates a warm and welcoming atmosphere throughout the home.



ORLANDO REID

St Johns Court 19b Quay Street, Manchester, M3 3HN

01616760099

manchester@orlandoreid.co.uk

<https://www.orlandoreid.co.uk/manchester/>

