

Visit Alternative Available



cubitt & west

Price

£2,500 PCM

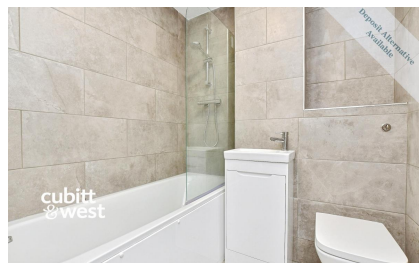
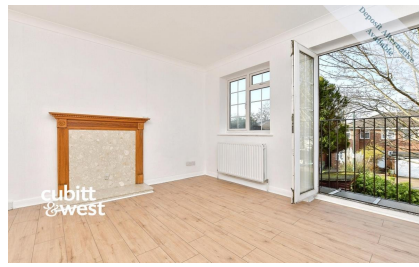
Fees Apply



Available 01/06/26

**Egmont Road Sutton
SM2**

cubitt & west
Helping you move forwards



Main Features

- 0.8 Miles From Sutton Station
- Recently Renovated Kitchen & Bathroom
- Harris Academy Catchment
- Driveway
- Flexible Layout
- Great Bus Links



Deposit required is £2,884.62
Sutton London - Council Tax Band Tax Band D

Renting a property is a big commitment and we recommend that you visit the local authority website and these websites which offer helpful information and advice about letting

www.gov.uk/government/publications/how-to-rent

www.gov.uk/private-renting

www.cubittandwest.co.uk/renting/tenancy-fees-individuals/

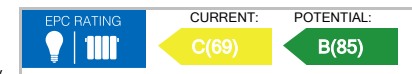
www.gov.uk/green-deal-energy-saving-measures

Call Sutton 020 86426266 ■ cubittandwest.co.uk

IMPORTANT INFORMATION: Please contact our Lettings Team who will confirm the total costs involved in renting this property. For clarification, we wish to inform the prospective tenant that we have prepared these details as a general guide. The agent has not carried out a detailed survey nor tested the services, appliances, or specific fittings (unless otherwise stated), and no warranty can be given as to their condition. All room measurements are taken at floor level. We strongly recommend that all the information which we provide about the property is verified by yourself and your advisers. The contents of this publication are © Cubitt & West, 2015. Cubitt & West is a trading name of Arun Estates Limited Registered in England No. 2597969

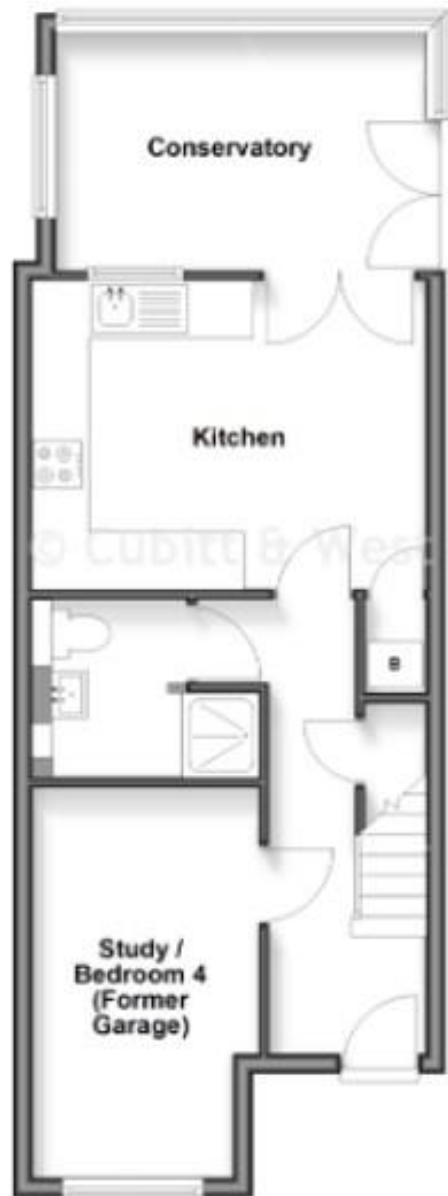
Accommodation

- Study/ Bedroom 4 13'6 X 7'9
- Kitchen 13'9 X 10'8
- Conservatory 12'8 X 7'8
- Lounge 13'9 X 9'3
- Dining Room 13'3 X 7'11
- Bedroom 1 13'10 X 9'3
- Bedroom 2 10'7 X 7'3
- Bedroom 3 10'4 X 6'0



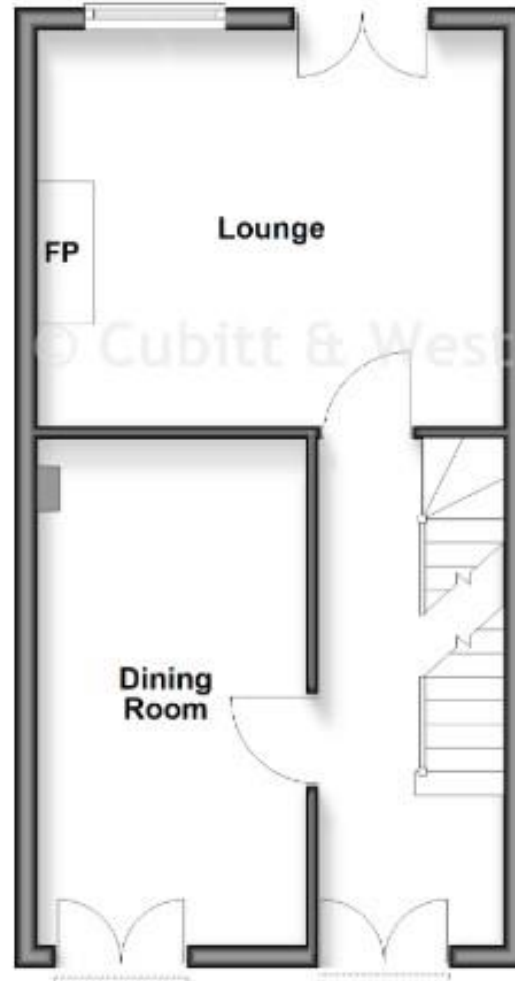
Ground Floor

Approx. 45.8 sq. metres (492.5 sq. feet)



First Floor

Approx. 33.0 sq. metres (355.5 sq. feet)



Second Floor

Approx. 32.5 sq. metres (349.9 sq. feet)

