

Let **UK** Home

1 Bedrooms

Flat - Studio

Located in London

£2,800 Per Month



info@letukhome.co.uk

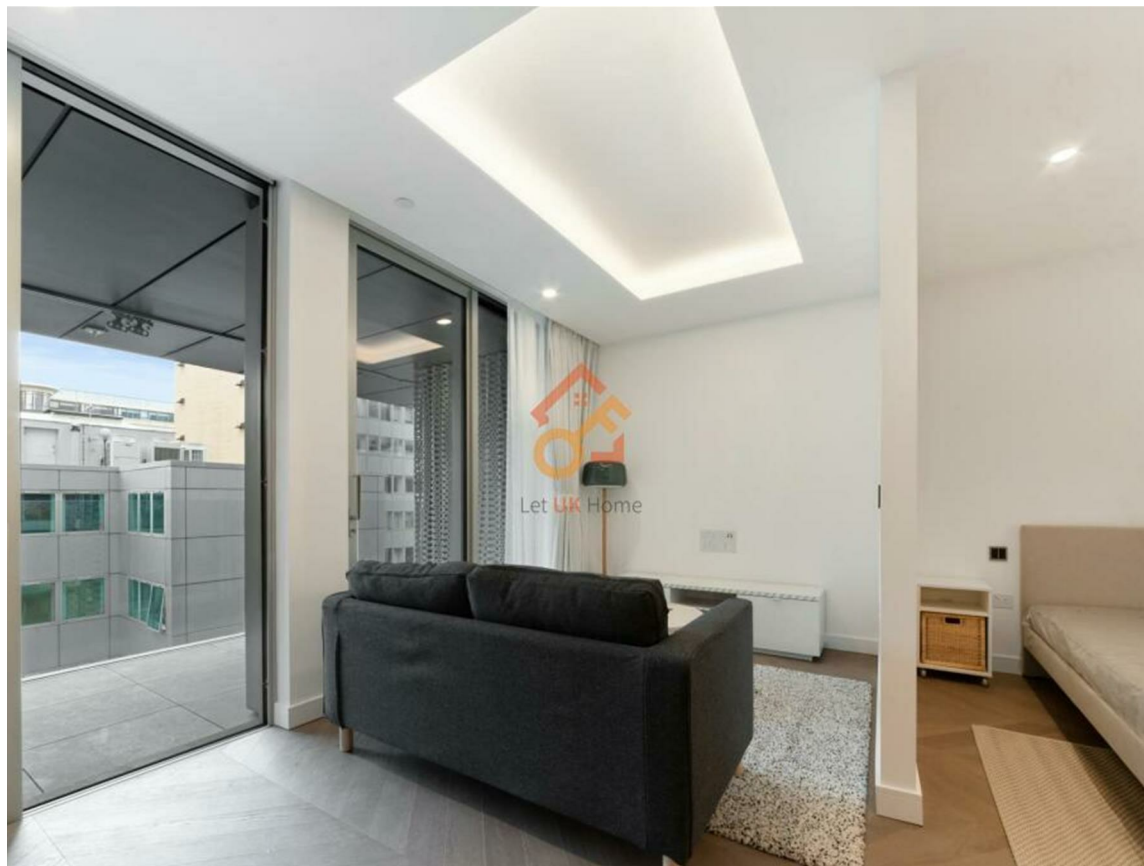
<https://www.letukhome.co.uk/>

01795 358 886



16 Minories London

EC3N 1BL



Let UK Home are excited to offer this spectacular studio apartment in the heart of The Haydon development located in Aldgate, EC3N.

The flat comprises a spacious open kitchen with a stylishly attached dining area, a magnificent living area leading to a large private balcony, one bright bedroom area with built-in wardrobes and one modern bathroom.

Amenities include a contemporary gym with a spa pool, a dedicated yoga room and fitness studio. Residents can also enjoy a state-of-the-art private cinema, an outdoor terrace, a dedicated concierge, and secure bicycle storage. The Haydon is not just a place to live; it's an experience crafted for those who appreciate comfort, style, and convenience, all in the heart of London's bustling metropolis.

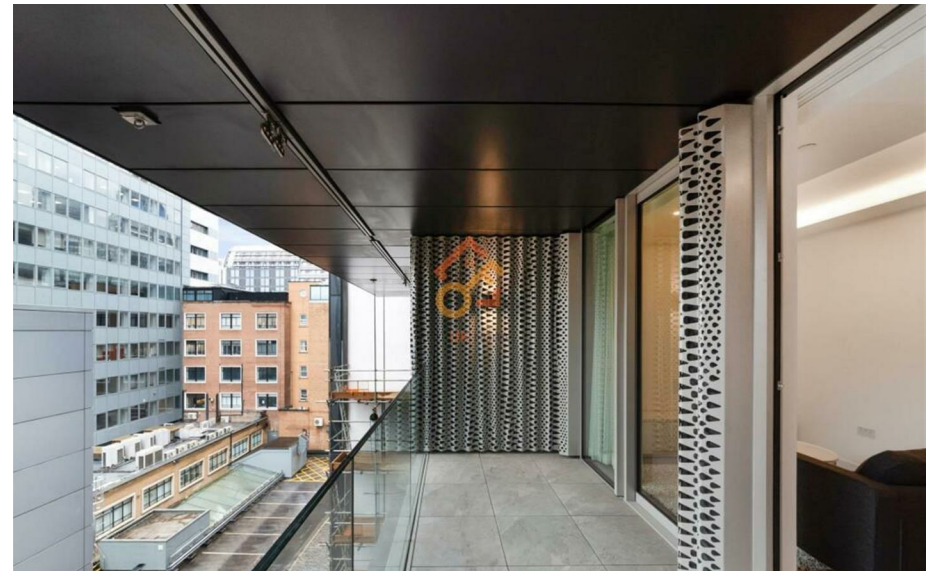
Ideally located in the City's 'Square Mile,' The Haydon is mere minutes from the London Underground. Positioned to perfection, this unique development seamlessly combines urban sophistication with tranquility, offering residents a haven while being in the midst of it all. Whether it is Michelin-starred restaurants or the arts and entertainment, The Haydon is in the midst of it all.

16 Minories London

£2,800 Per Month

- 4th Floor
- 24h Security
- The Gym
- The Spa

- EPC Rating: B
- Concierge Service
- Cinema & Game Room
- Roof Terrace





THE HAYDON

4TH FLOOR		STUDIO APARTMENT	
EXTERNAL AREA	8.85 sq m 95 sq ft		
INTERNAL AREA	37.36 sq m 402 sq ft		
STUDIO	4.85m x 7.77m 15' 11" x 25' 6"	BATHROOM	2.20m x 2.00m 7' 3" x 6' 7"
TERRACE	5.08m x 1.80m 16' 8" x 5' 11"		



Let **UK** Home

3F 2 Eastbourne Terrace
Paddington
London
W2 6LG

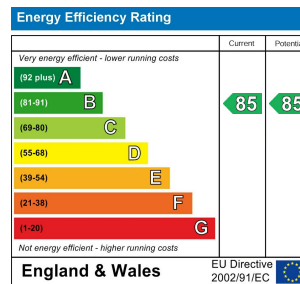
01795 358 886

info@letukhome.co.uk

Council Tax Band: E

Local Authority:

Agents Note: Whilst every care has been taken to prepare these particulars, they are for guidance purposes only. All measurements are approximate and are for general guidance purposes only and whilst every care has been taken to ensure their accuracy, they should not be relied upon and potential buyers/tenants are advised to recheck the measurements.



<https://www.letukhome.co.uk/>