



Price
£350,000

Freehold

4x  3x  1x 

**Bond Road,
Sittingbourne, Kent,
ME10**

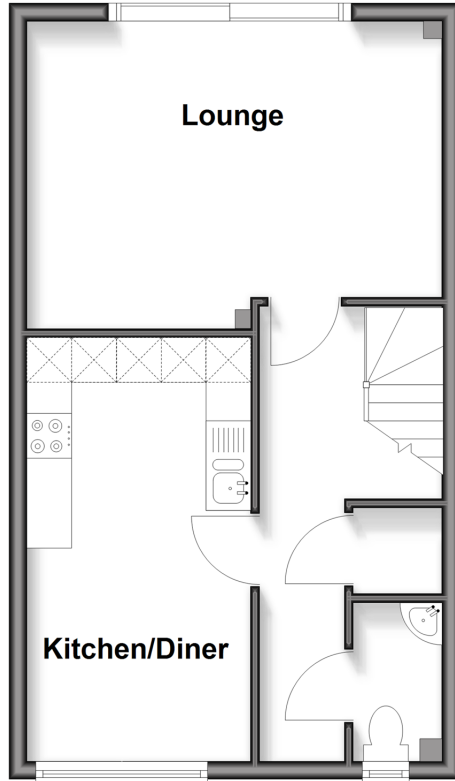
OVER 60?

Secure this property
for up to **59% less!**

Wards
Helping you move forwards

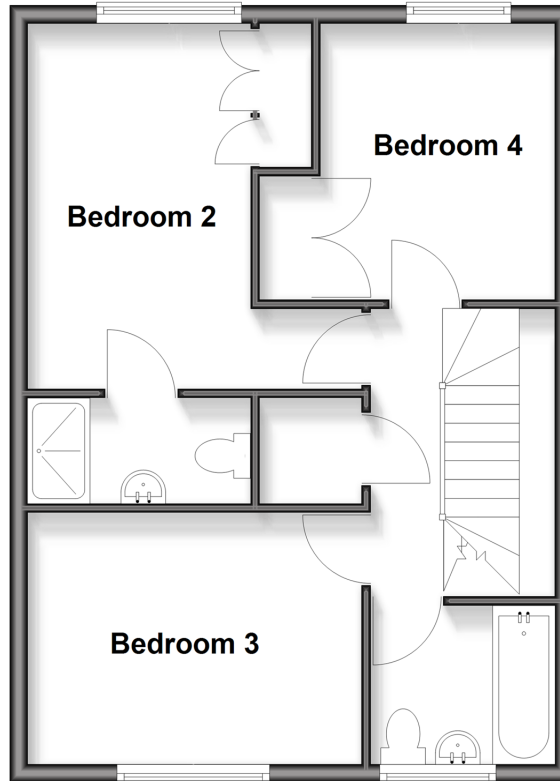
Ground Floor

Approx. 38.3 sq. metres (412.6 sq. feet)



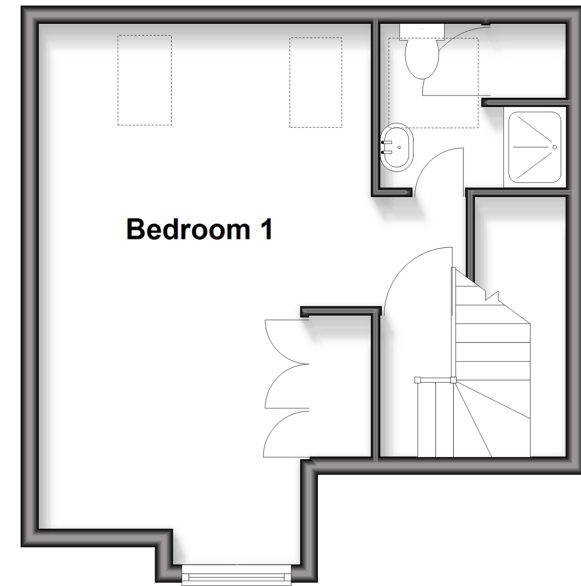
First Floor

Approx. 48.8 sq. metres (525.3 sq. feet)



Second Floor

Approx. 31.5 sq. metres (338.5 sq. feet)



Accommodation

GROUND FLOOR

Hallway
Cloakroom
Kitchen/Diner: 13'6 x 8'2 (4.12m x 2.49m)
Lounge: 18'2 x 10'0 (5.54m x 3.05m)

FIRST FLOOR

Landing
Bathroom
Bedroom 3: 13'2 x 9'2 (4.02m x 2.80m)
Bedroom 2: 13'8 x 8'6 (4.17m x 2.59m)
En-Suite Shower Room
Bedroom 4: 10'1 x 8'2 (3.08m x 2.49m)

SECOND FLOOR

Landing
Bedroom 1: 20'0 x 11'3 (6.10m x 3.43m)
En-Suite Shower Room

OUTSIDE

Off-Road Parking
Rear Garden



Main features

- Town house laid out over 3 floors; ideal for family living
- 2 en-suite shower rooms, family bathroom and ground floor cloakroom for convenience
- Modern kitchen/diner with a spacious lounge
- Generously sized bedrooms providing comfort for the whole family
- Private parking and nearby green spaces for outdoor activities

Nearest Schools

Primary Schools: Grove Park Community Primary 0.0 miles, Bobbing Village School 0.2 miles, Regis Manor Community Primary 0.8 miles

Secondary Schools: The Westlands School 0.4 miles,

Transport Information

Train Stations: Sittingbourne 1.1 miles, Kemsley 1.2 miles, Newington 1.8 miles

Address

Bond Road, Sittingbourne, Kent, ME10

Directions

For directions to this property please contact us.



Wards
Helping you move forwards

Call Sittingbourne Branch 01795 427272 ■ wardsofkent.co.uk



■ Through a Homewise Home For Life Plan people aged 60+ can secure this property for up to 59% less, by purchasing a Lifetime Lease



11739062/20260323/JS/PH